



KINGSTON

Manufacturing reliable industrial valves for industry since 1908.

292

Control Valve

Model 292

Kingston Low Flow Side Port Air Control Valve



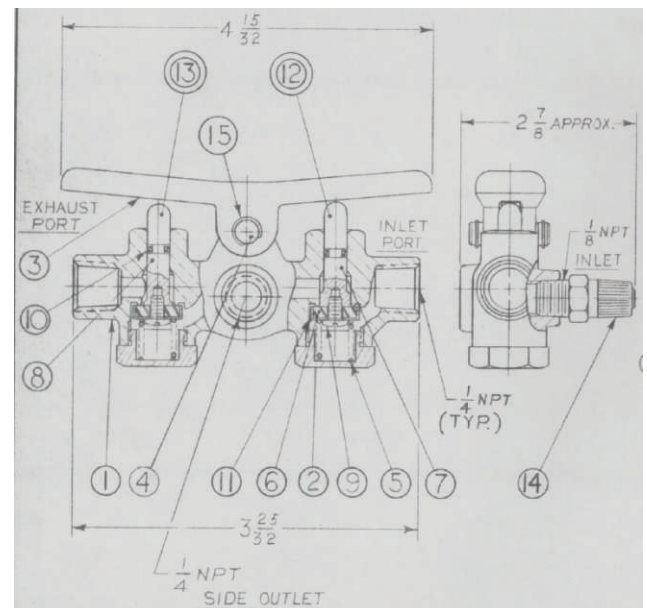
Features

- Double Brass Construction with Buna-N Seals
- Horizontal Side Port
- 1/8" Tank Valve, Providing a Second Means to Pressurize the Cylinder by Using a Tire Chuck Without Actuating the Lever
- Maximum Operating Pressure is 150 PSI
- Models 292-2 & 296-2 Designs Differ Only in the Position of the Cylinder Port.
- "Two-step" Valve Design for Operating Single Acting Cylinders

Model	Dimensions (inches)		Pressure Range (PSIG)	Approx. Shipping Wt.
	Height (A)	Width (B)		
292	2-3/16"	3-25/32"	10-150	13 oz.

Materials

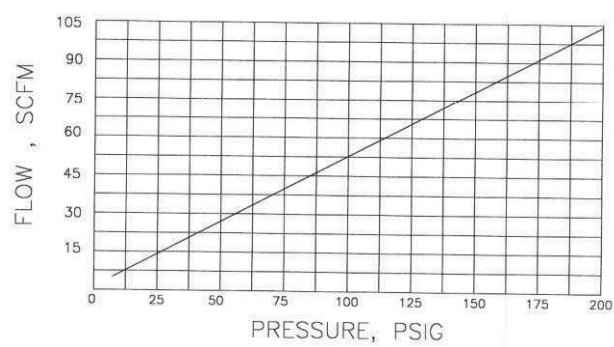
No.	Part Name	Materials
1	Body	Brass
2	Cap	Brass
3	Lever	Brass
4	Lever Pin	Leaded Steel
5	Spring	Music Wire
6	Disc	Buna "N"
7	Inlet Stem	Brass
8	Exhaust Stem	Brass
9	Disc Screw	Brass
10	"O" Ring	Buna "N"
11	Disc Cage	Brass
12	Inlet Stem Assembly	DTLS No. 6, 7, 9, 10, 11
13	Exhaust Stem Assembly	DTLS No. 6, 7, 9, 10, 11
14	Tank Valve	
15	Crescent Ring	Carbon Steel



Kingston Model 292 Control Valve

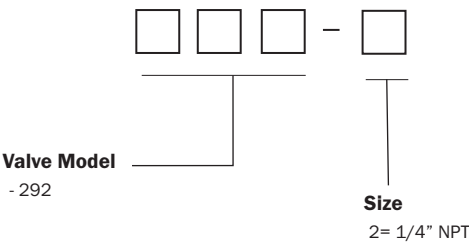
Flow Capacity Information

Fig. 292 - 1/4"



Ordering Information

Kingston Control Valves Part Number Codes



Example:
292-2

Product Notes

Storm Manufacturing reserves all rights. Product specifications and designs are subject to change without notice.

The information contained herein by Storm Manufacturing Group (SMG) is provided in good faith and as a product guide only. Further, SMG makes no representation as to the completeness or accuracy of the information contained herein. Any person or persons using the information contained herein must exercise their own judgement and consider all local, regional, national and global safety standards in evaluating valve selection options. Final application design and integration of Kingston Products are the sole responsibility of the end user.



www.KingstonValves.com
KINGSTON



KINGSTON

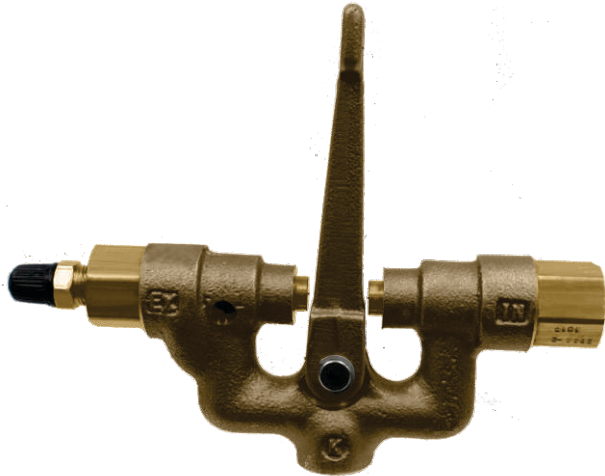
Manufacturing reliable industrial valves for industry since 1908.

294

Control Valve

Model 294

Kingston High Flow Side Port Air Control Valve



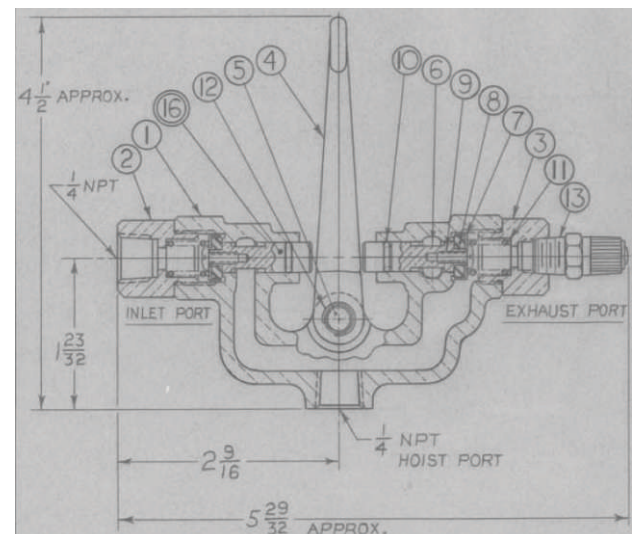
Features

- Durable Brass Construction with Buna-N Seals
- Inlet Stem is Designed to Provide Restricted Flow on Initial Opening with Full Flow Achieved when Fully Opened
- Designed for a Higher Flow Capacity, Providing Quicker Cylinder Operation
- Standard Valve includes a Tank Valve
- "Two-step" Valve Design for Operating Single Acting Cylinders

Model	Dimensions (inches)		Pressure Range (PSIG)	Approx. Shipping Wt.
	Height (A)	Width (B)		
294	4-1/2"	5-29/32"	10-150	1 lb.

Materials

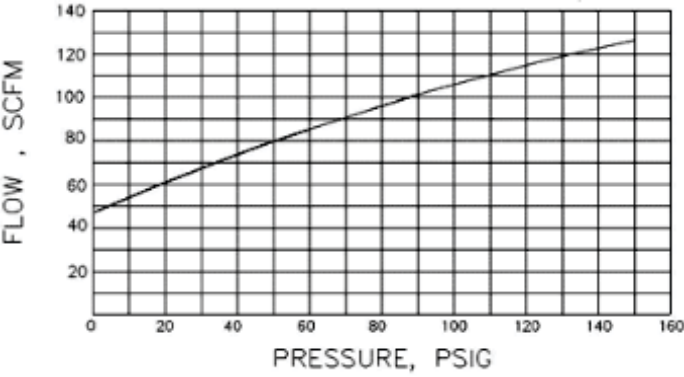
No.	Part Name	Materials
1	Body	Brass
2	Cap (Inlet)	Brass
3	Cap (Exhaust)	Brass
4	Lever	Brass
5	Pin (Lever)	Leaded Steel
6	Stem	Brass
7	Cage (Disc)	Brass
8	Disc	Buna "N"
9	Screw (Disc)	Stainelss Steel
10	"O" Ring	Buna "N"
11	Spring	Stainelss Steel
12	Retaining Ring	Spring Steel
13	Tank Valve	



Kingston Model 294 Control Valve

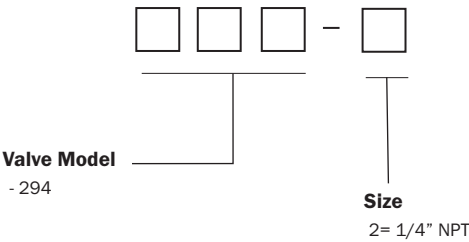
Flow Capacity Information

Fig. 294 - 1/4"



Ordering Information

Kingston Control Valves Part Number Codes



Example:
292-2

Product Notes

Storm Manufacturing reserves all rights. Product specifications and designs are subject to change without notice.

The information contained herein by Storm Manufacturing Group (SMG) is provided in good faith and as a product guide only. Further, SMG makes no representation as to the completeness or accuracy of the information contained herein. Any person or persons using the information contained herein must exercise their own judgement and consider all local, regional, national and global safety standards in evaluating valve selection options. Final application design and integration of Kingston Products are the sole responsibility of the end user.



www.KingstonValves.com
KINGSTON



KINGSTON

Manufacturing reliable industrial valves for industry since 1908.

296

Control Valve

Model 296

Kingston Low Flow Side Port Air Control Valve



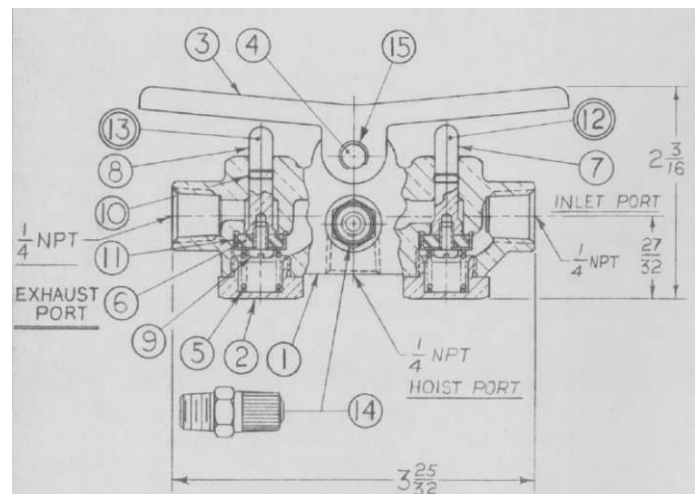
Features

- Durable Brass Construction with Buna-N Seals
- Inlet Stem is Designed to Provide Restricted Flow on Initial Opening with Full Flow Achieved when Fully Opened
- 1/8" Tank Valve, Providing a Second Means to Pressurize the Cylinder by Using a Tire Chuck Without Actuating the Lever.
- Maximum Operating pressure is 150 PSI
- Models 292-2 & 296-2 Designs Differ Only in the Position of the Cylinder Port.
- "Two-step" Valve Design for Operating Single Acting Cylinders

Model	Dimensions (inches)		Pressure Range (PSIG)	Approx. Shipping Wt.
	Height (A)	Width (B)		
296	2-3/16"	3-25/32"	10-150	15 oz.

Materials

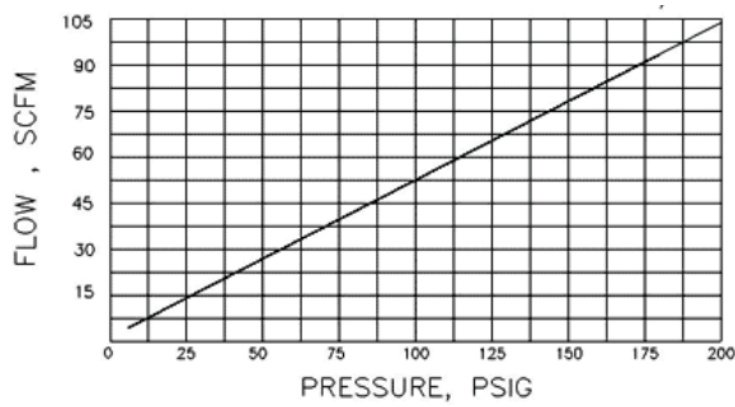
No.	Part Name	Materials
1	Body	Brass
2	Cap	Brass
3	Lever	Brass
4	Lever Pin	Leaded Steel
5	Spring	Music Wire
6	Disc	Buna "N"
7	Inlet Stem	Brass
8	Exhaust Stem	Brass
9	Disc Screw	Brass
10	"O" Ring (Stem)	Buna "N"
11	Cage (Disc)	Brass
12	Inlet Stem Assembly Item No. 6, 7, 9, 10, & 11	
13	Exhaust Tem Assembly Item No. 6, 8, 9, 10, & 11	
14	Tank Valve	
15	Crescent Ring	Carbon Steel



Kingston Model 296 Control Valve

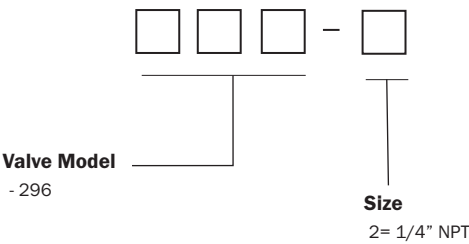
Flow Capacity Information

Fig. 296 - 1/4"



Ordering Information

Kingston Control Valves Part Number Codes



Example:
296-2

Product Notes

Storm Manufacturing reserves all rights. Product specifications and designs are subject to change without notice.

The information contained herein by Storm Manufacturing Group (SMG) is provided in good faith and as a product guide only. Further, SMG makes no representation as to the completeness or accuracy of the information contained herein. Any person or persons using the information contained herein must exercise their own judgement and consider all local, regional, national and global safety standards in evaluating valve selection options. Final application design and integration of Kingston Products are the sole responsibility of the end user.



www.KingstonValves.com
KINGSTON



KINGSTON

Manufacturing reliable industrial valves for industry since 1908.

298

Control Valve

Model 298

Kingston Low Flow Side Port Air Control Valve



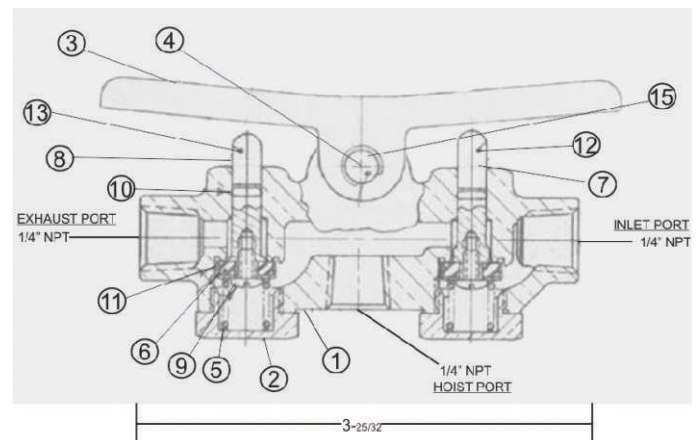
Features

- Durable Brass Construction with Buna-N Seals
- Inlet Stem is Designed to Provide Restricted Flow on Initial Opening with Full Flow Achieved when Fully Opened
- Vertical Bottom Cylinder Port
- Maximum Operating Pressure is 150 PSI
- "Two-step" Valve Design for Operating Single Acting Cylinders
- Model 298-2-6 Differs from the 296-2 only in the Tank Valve. The Tank Valve is only present in 296-2.

Model	Dimensions (inches)		Pressure Range (PSIG)	Approx. Shipping Wt.
	Height (A)	Width (B)		
298	1-73/100"	3-25/32"	10-150	14 oz.

Materials

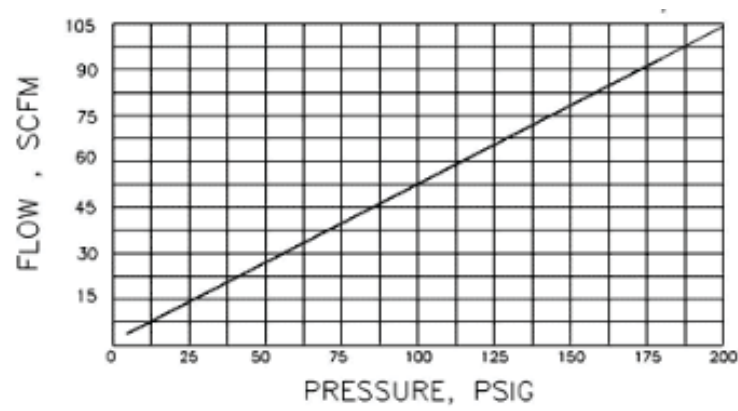
No.	Part Name	Materials
1	Body	Brass
2	Cap	Brass
3	Lever	Brass
4	Lever Pin	Carbon Steel
5	Spring	Music Wire
6	Disc	Buna "N"
7	Inlet Stem	Brass
8	Exhaust Stem	Brass
9	Disc Screw	Brass
10	"O" Ring	Buna "N"
11	Disc Cage	Brass
12	Inlet Stem Assembly Item No 6, 7, 9, 10 & 11	
13	Exhaust Stem Assembly Item No. 6, 8, 9, 10 & 11	
15	Crescent Ring	Carbon Steel



Kingston Model 298 Control Valve

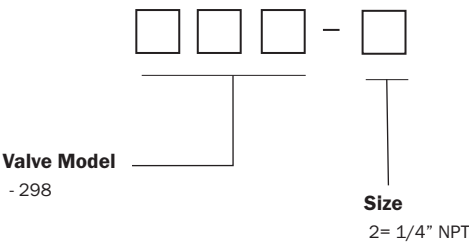
Flow Capacity Information

Fig. 298 - 1/4"



Ordering Information

Kingston Control Valves Part Number Codes



Example:
298-2

Product Notes

Storm Manufacturing reserves all rights. Product specifications and designs are subject to change without notice.

The information contained herein by Storm Manufacturing Group (SMG) is provided in good faith and as a product guide only. Further, SMG makes no representation as to the completeness or accuracy of the information contained herein. Any person or persons using the information contained herein must exercise their own judgement and consider all local, regional, national and global safety standards in evaluating valve selection options. Final application design and integration of Kingston Products are the sole responsibility of the end user.



www.KingstonValves.com
KINGSTON



KINGSTON

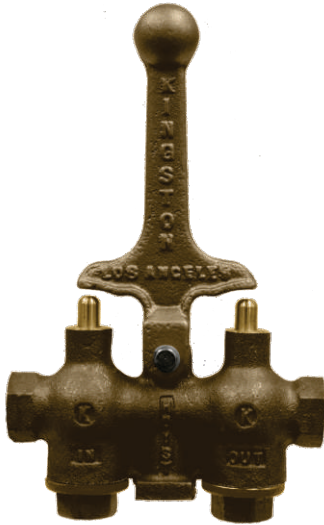
Manufacturing reliable industrial valves for industry since 1908.

301AC

Control Valve

Model 301AC

Kingston Pneumatic Control Valve



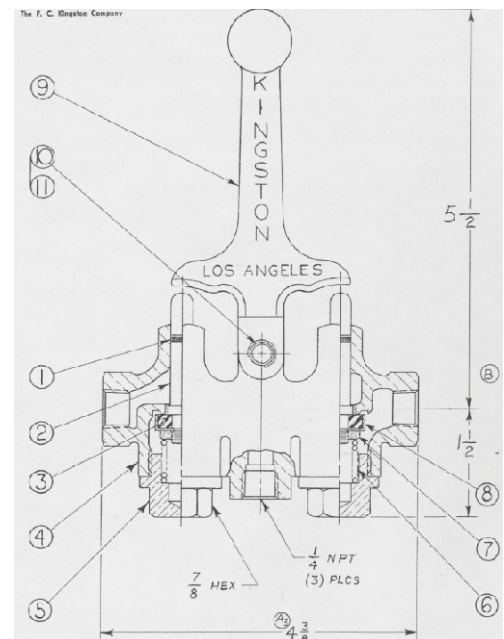
Features

- Pneumatic Control Valve for Operating Single Acting Cylinders, Rams, Lifts, etc..
- Constructed from Cast Brass with Stainless Steel Springs
- Equipped with a "Dead Man" Control Lever
- Air Control is Achieved by Moving Lever to Inlet or Exhaust Stems
- Maximum Operating Pressure is 200 PSIG
- Available in Sizes 1/4" NPT

Model	Dimensions (Inches)		Pressure Range (PSIG)	Approx. Shipping Wt.
	Height (A)	Width (B)		
301AC-2	7"	4-3/8"	10-200	1 lb. 13 oz.

Materials

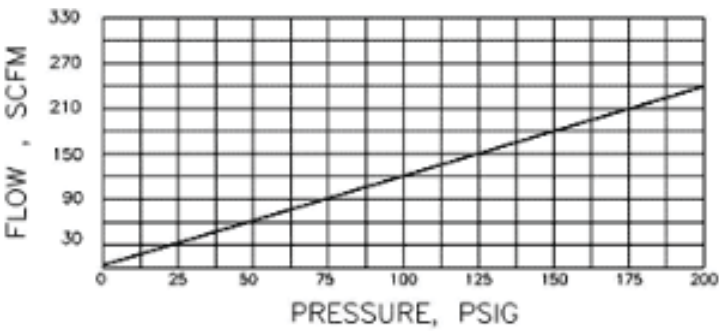
No.	Part Name	Materials
1	"O" Ring	Buna "N"
2	Stem	Brass
3	Disc	Buna "N"
4	Body	Brass
5	Cap	Brass
6	Spring	Stainless Steel
7	Stem Nut	Brass
8	Cage	Brass
9	Lever	Brass
10	Lever Pin	Steel
11	Snap Ring	Carbon Steel



Kingston Model 301AC Control Valve

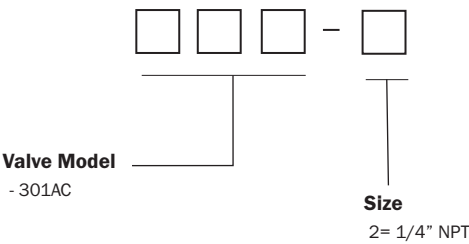
Flow Capacity Information

Fig. 301AC - 1/4"



Ordering Information

Kingston Control Valves Part Number Codes



Example:
301AC-2

Product Notes

Storm Manufacturing reserves all rights. Product specifications and designs are subject to change without notice.

The information contained herein by Storm Manufacturing Group (SMG) is provided in good faith and as a product guide only. Further, SMG makes no representation as to the completeness or accuracy of the information contained herein. Any person or persons using the information contained herein must exercise their own judgement and consider all local, regional, national and global safety standards in evaluating valve selection options. Final application design and integration of Kingston Products are the sole responsibility of the end user.



www.KingstonValves.com
KINGSTON



KINGSTON

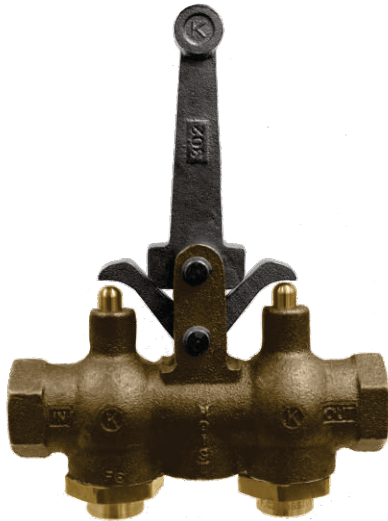
Manufacturing reliable industrial valves for industry since 1908.

302-4

Control Valve

Model 302-4

Kingston Locking Hoist Control Valve



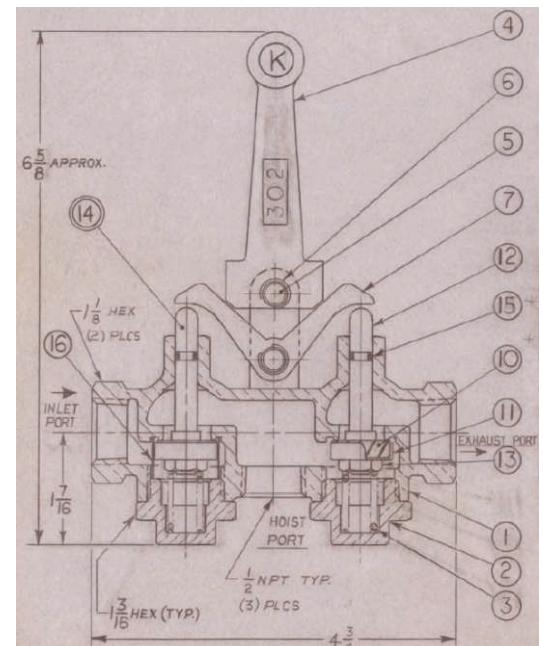
Features

- Designed to Operate Various Lifting Devices Utilizing Compressed Air (or Oil) as a Power Source
- Constructed from Heavy Cast Brass
- Internal Components of Precision Machined Brass Bar Stock, Stainless Steel Springs, Stainless Steel Inlet Screen, and Buna-N Seals
- Features a "Locking" Style Lever
- Widely Used on Automobile, Truck Hoists, and Spring Loaded Single Acting Cylinders

Model	Dimensions (inches)		Pressure Range (PSIG)	Approx. Shipping Wt.
	Height (A)	Width (B)		
302-4	6-5/8"	4-3/4"	10-200	2 lb. 1 oz.

Materials

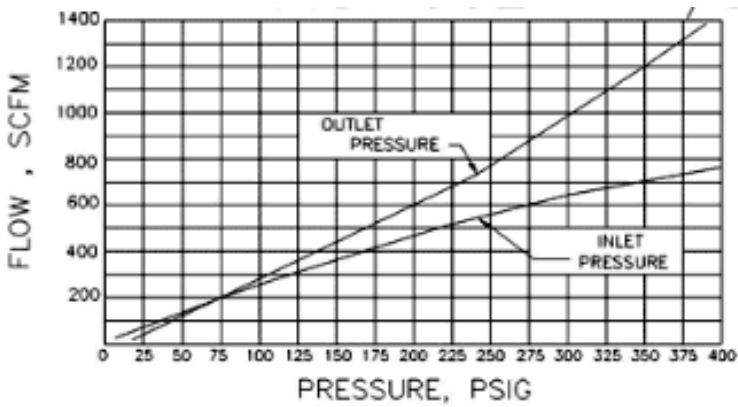
No.	Part Name	Materials
1	Body	Brass
2	Cap	Brass
3	Spring	Stainless Steel
4	Lever	Stainless Steel
5	Pin	Leaded Steel
6	Snap Ring	Carbon Steel
7	Rocker Arm	Stainless Steel
10	Disc	Buna "N"
11	Disc Cage	Brass
12	Stem	Brass
13	Stem Nut	Brass
14	Stem Assembly, Item No. 10, 11, 12, 13, & 15	
15	Screen "O" Ring	Stainless Steel Buna "N"



Kingston Model 302-4 Control Valve

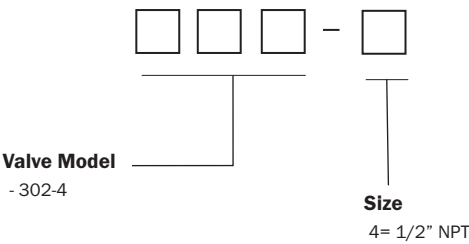
Flow Capacity Information

Fig. 302 - 1/2"



Ordering Information

Kingston Control Valves Part Number Codes



Example:
302-4

Product Notes

Storm Manufacturing reserves all rights. Product specifications and designs are subject to change without notice.

The information contained herein by Storm Manufacturing Group (SMG) is provided in good faith and as a product guide only. Further, SMG makes no representation as to the completeness or accuracy of the information contained herein. Any person or persons using the information contained herein must exercise their own judgement and consider all local, regional, national and global safety standards in evaluating valve selection options. Final application design and integration of Kingston Products are the sole responsibility of the end user.



www.KingstonValves.com
KINGSTON



KINGSTON

Manufacturing reliable industrial valves for industry since 1908.

303-4

Control Valve

Model 303-4

Kingston Hoist Control Valve



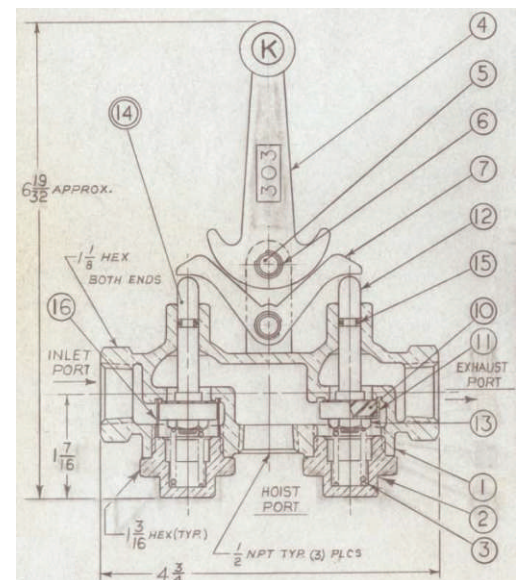
Features

- Designed to Operate Various Lifting Devices Utilizing Compressed Air (or Oil) as a Power Source
- Constructed from Heavy Cast Brass
- Internal Components of Precision Machined Brass Bar Stock, Stainless Steel Springs, Stainless Steel Inlet Screen, and Buna-N Seals
- Positive Air Control is Achieved by the Cam Action of the "Dead Man" Style Lever
- Widely Used on Automobile, Truck Hoists, and Spring Loaded Single Acting Cylinders
- Maximum Operating Pressure is 200 PSIG

Model	Dimensions (inches)		Pressure Range (PSIG)	Approx. Shipping Wt.
	Height (A)	Width (B)		
303-4	6-19/32"	4-3/4"	10-200	2 lb. 1 oz.

Materials

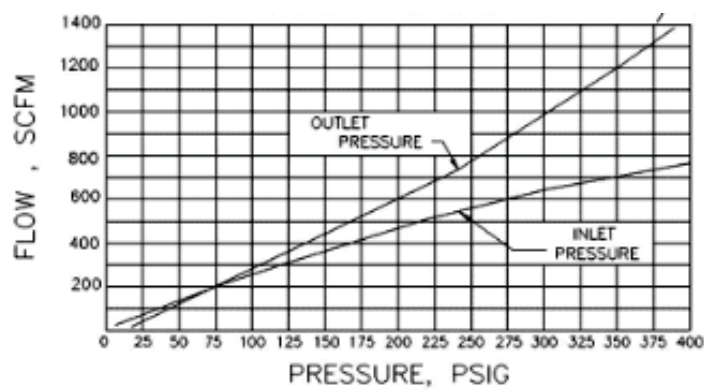
No.	Part Name	Materials
1	Body	Brass
2	Cap	Brass
3	Spring	Stainless Steel
4	Lever	Stainless Steel
5	Pin	Leaded Steel
6	Snap Ring	Carbon Steel
7	Rocker Arm	Stainless Steel
10	Disc	Buna "N"
11	Disc Cage	Brass
12	Stem	Brass
13	Stem Nut	Brass
14	Stem Assembly, Item No. 10, 11 12, 13, & 15,	
15	"O" Ring	Buna "N"
16	Screen	Stainless Steel



Kingston Model 303-4 Control Valve

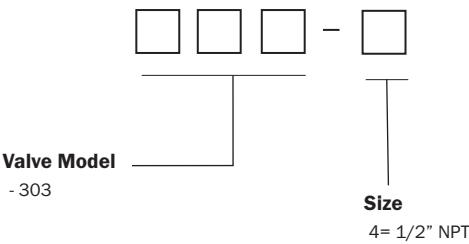
Flow Capacity Information

Fig. 303 - 1/2"



Ordering Information

Kingston Control Valves Part Number Codes



Example:
303-4

Product Notes

Storm Manufacturing reserves all rights. Product specifications and designs are subject to change without notice.

The information contained herein by Storm Manufacturing Group (SMG) is provided in good faith and as a product guide only. Further, SMG makes no representation as to the completeness or accuracy of the information contained herein. Any person or persons using the information contained herein must exercise their own judgement and consider all local, regional, national and global safety standards in evaluating valve selection options. Final application design and integration of Kingston Products are the sole responsibility of the end user.



www.KingstonValves.com
KINGSTON



KINGSTON

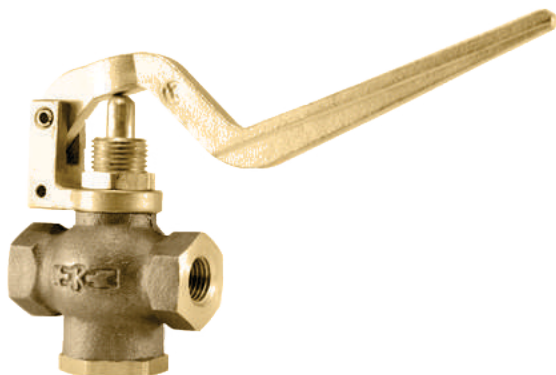
Manufacturing reliable industrial valves for industry since 1908.

305A

Control Valve

Model 305A

Kingston Quick Opening Industrial Flow Control Valve



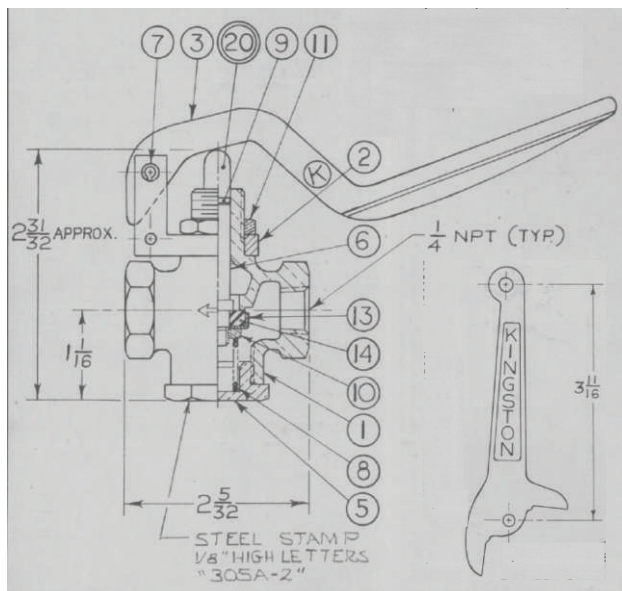
Features

- Referred to as "Whistle Valve"
- Used on Agricultural and Industrial Applications
- For Air and Liquid Service
- Not Recommended for Steam Service
- Available in 1/4" through 1-1/4"
- Maximum Working Pressure is 400 PSIG @ 60°F
- Maximum Working Temp. is 200°F
- Alternative Seals Available
- Alternative Disc, Lever and Cap Options May Be Available. Please Call for Details.

Model	Inlet Size	Outlet Size	Dimensions (inches) Height (A) Width (B)		Pressure Range (PSIG)	Approx. Shipping Wt.	Max. Temp (°F)
305A	1/4" NPT	1/4" NPT	2-31/32"	2-5/32"	10-400	10 oz.	200 °F
	3/8" NPT	3/8" NPT				13 oz.	
	1/2" NPT	1/2" NPT	4"	3"		1 lb. 10 oz.	
	3/4" NPT	3/4" NPT	4-1/4"	3-1/8"		1 lb. 12 oz.	
	1" NPT	1" NPT	4-1/2"	4"		2 lb. 4 oz.	
	1-1/4" NPT	1-1/4" NPT	5-1/8"			2 lb. 11 oz.	
						3 lb. 4 oz.	
						3 lb. 8 oz.	
				4 lb.			

Materials

No.	Part Name	Materials
1	Body	Brass
2	Bracket	Infiltrated Iron
3	Lever (Squeeze)	Infiltrated Iron
4	Lever (Pull)	Brass
5	Cap	Brass
6	Stem	Brass
7	Roll Pin	Carbon Steel
8	Spring	Stainless Steel
9	"O" Ring	Buna "N"
10	Nut Stem	Brass
11	Nut Bracket	Brass
13	Cage Disc	Brass
14	Disc Cage	Buna "N"
20	Stem Assembly Item 6, 9, 10, 13 & 14	



Kingston Model 305A Quick Opening Industrial Flow Control Valve

Flow Capacity Information

Fig. 305 - 1/4" & 3/8"

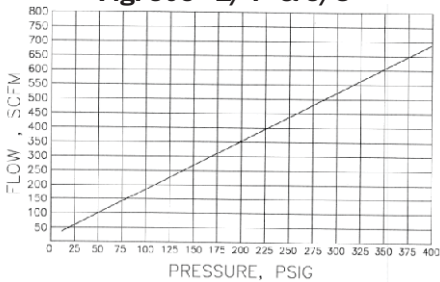


Fig. 305 - 1/2"

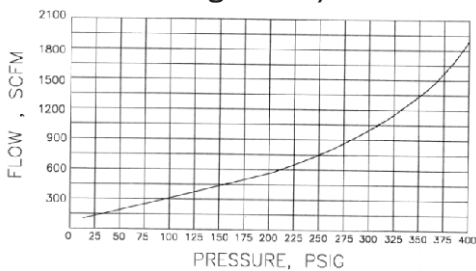


Fig. 305 - 1/2"

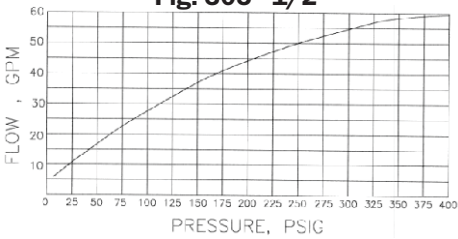


Fig. 305 - 3/4"

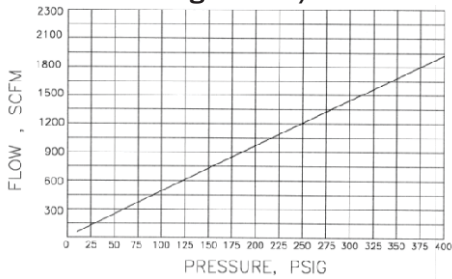


Fig. 305 - 3/4"

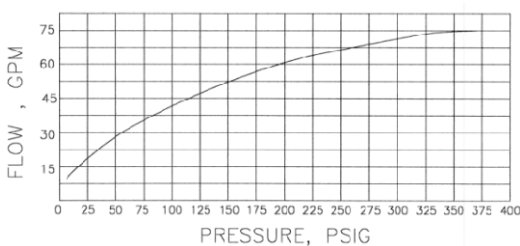


Fig. 305 - 1" & 1-1/4"

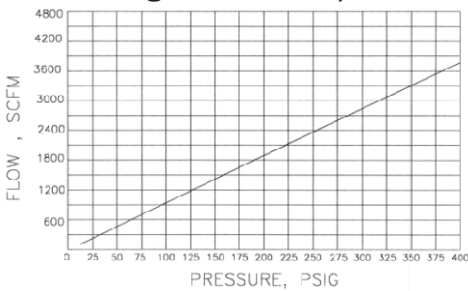


Fig. 305 - 1" & 1-1/4"

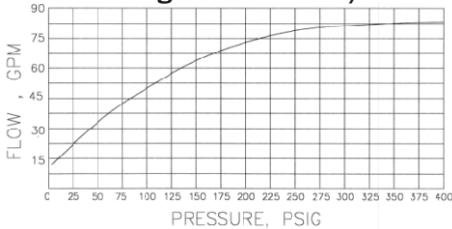
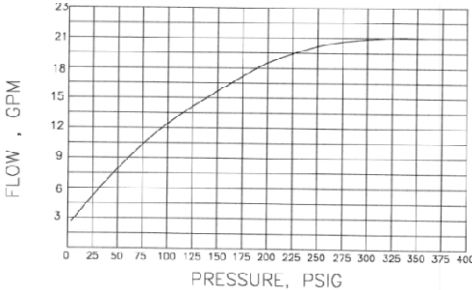


Fig. 305 - 1" & 1-3/8"



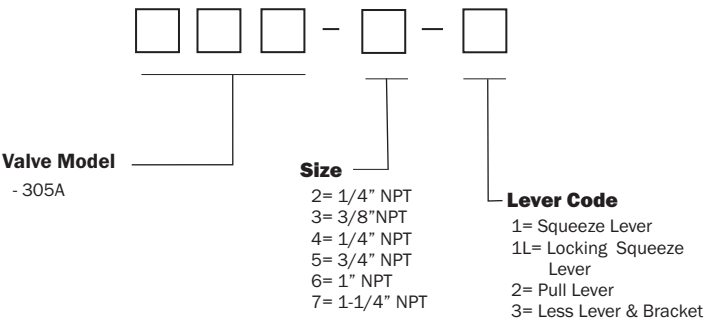
Product Notes

Storm Manufacturing reserves all rights. Product specifications and designs are subject to change without notice.

The information contained herein by Storm Manufacturing Group (SMG) is provided in good faith and as a product guide only. Further, SMG makes no representation as to the completeness or accuracy of the information contained herein. Any person or persons using the information contained herein must exercise their own judgement and consider all local, regional, nation and global safety standards in evaluating valve selection options. Final application design and integration of Kingston Products are the sole responsibility of the end user.

Ordering Information

Kingston Air Actuators (305A) Part Number Codes



www.KingstonValves.com
KINGSTON