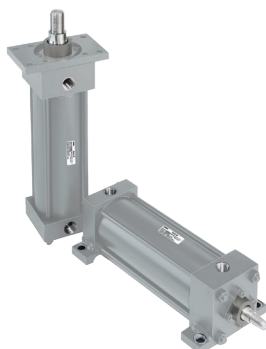


Hydraulic and Pneumatic Cylinder Products

Pneumatic Tie Rod Cylinders

AV Series

- Catalog M0910
- Heavy Duty Line
- Bore sizes from 1.00" to 14.00"
- Pressures to 250 psi
- 14 mounting styles
- High-temp capability (400°F)



SA Series (Stainless Steel)

- Catalog M0914
- N.F.P.A. interchangeable
- Bore sizes from 1.13" to 8.00"
- Pressures to 250 psi
- 8 Standard mounting styles
- For corrosive environments and food processing industry applications.



VE Series

- Catalog HY08-M0948
- Bore diameters – 2.00" to 24.00"
- Maximum working pressure – 150 PSI pneumatic
- Piston rod diameters – .625" to 3.500"
- Stroke lengths – bore diameter dependant
- Single and double piston rod construction available
- Spring extend or retract
- Double acting



Hydraulic Tie Rod Cylinders

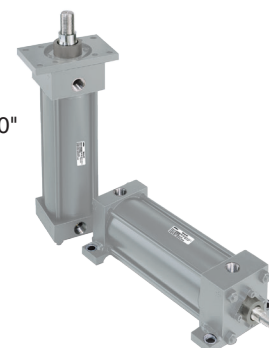
HV2 Series

- Catalog M1140
- Heavy Duty Line
- Bore sizes from 1.50" to 20.00"
- Pressures to 3000 psi
- 16 mounting styles
- High-temp capability (400°F)



JV Series

- Catalog M1130
- Medium Duty Line
- Bore sizes from 1.00" to 6.00", 8.00"
- Pressures to 1000 psi
- 14 mounting styles
- High-temp capability (400°F)



Hydraulic Roundline Cylinders

Series RDH

- Catalog HY08-M1320
- Operating pressure of 3,000 psi
- Gross stroke lengths available in any practical length
- 9 standard mounting styles
- 5 standard rod end styles (specials available for easy adaptability)
- Approximately 36% lower weight than comparable steel tie rod cylinder construction



For application questions call (847) 298-2400, email mfpclmktg@parker.com
or visit us on our website at: www.millerfluidpower.com

Position Sensing Hydraulic Cylinders

HV2X Series

- Pressures to 3000 psi
- Bore sizes from 1.50" to 20.00"
- Digital and analog outputs
- Intrinsically safe or explosion proof available
- Low friction seals available



Compact Hydraulic Cylinders

CHD/CHE Series

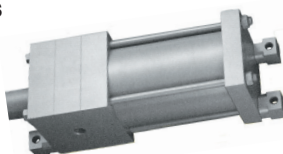
- Catalog HY08-M1137
- CHD – 207 bar operating pressure
- CHE – up to 140 bar operating pressure (bore dependent)
- Available bore sizes: 20mm through 100mm
- 13 mounting styles
- Temperature range: -23°C to +121°C
- Male and female rod ends standard – specials to order
- SAE, NPT or BSPP porting standard



Specialty Cylinders

Boosters, Tandems & Tanks

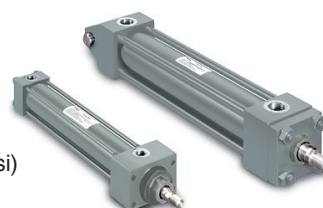
- Catalog M8310
- Air to air, air to oil & oil to oil
- Shop air converted to 10,000 psi oil
- Back to back or tandem cylinders
- Multiple piston cylinders
- Aluminum/fiberglass air/oil tanks
- Lightweight, low cost and dependable



Metric Hydraulic Cylinders

MHP Series (Metric)

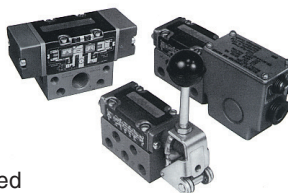
- Catalog HY08-M1151
- Heavy Duty Hydraulic Line
- ISO Standard 6020-2
- Single and Double Rod Ends
- Pressures to 210 bar (3000 psi)
- 18 Mounting Styles
- Bore Sizes from 25mm to 200mm
- Metric rod, tube, ports and fasteners



Miller Air Valves

304, 504 & 310 Air Valves

- Catalog M9763
- 1/8" NPT to 3/4" NPT subplate mounted valves
- 3-way and 5-way, 2 & 3 position
- Operating pressures to 250 psi
- Solenoid, air pilot, manual operated
- Palm button, cam & hand lever actuated



Tru-Seal Sealing Nuts

Tru-Seals

- Catalog M8456
- Pipe thread sealing nuts
- Available in NPT or SAE thread forms
- Sizes range from 1/8" to 3"
- PTFE insert impervious to virtually all fluids
- Pressures to 3,000 psi

