

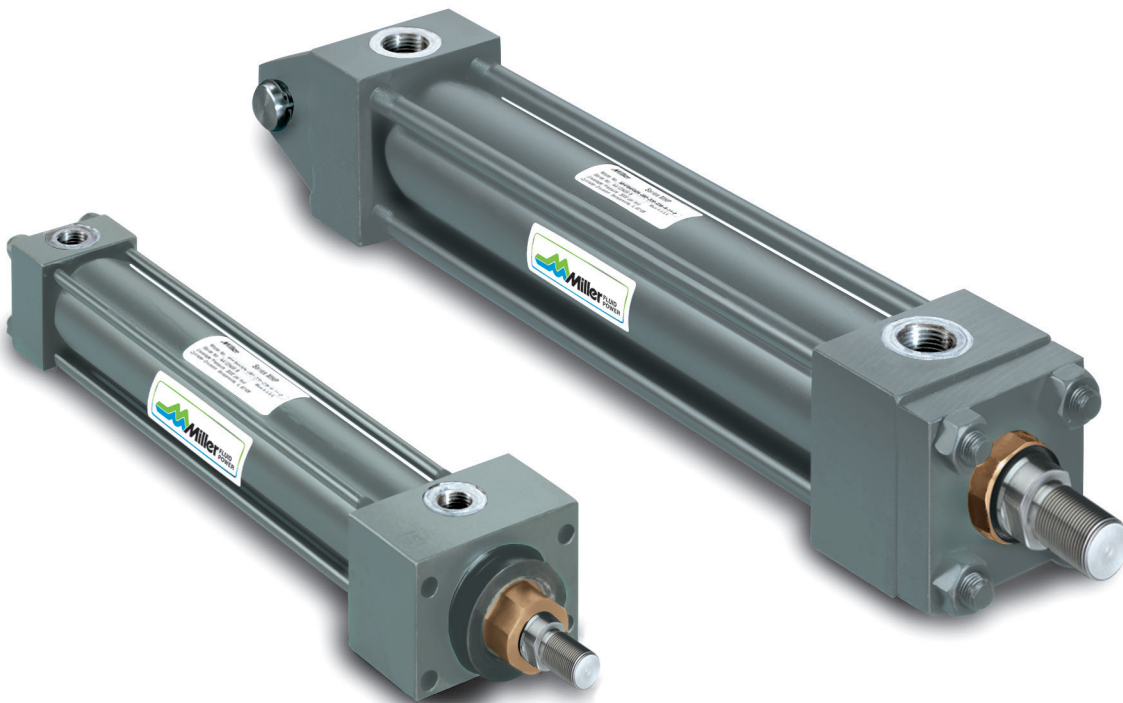
# Miller MHP Series

## Hydraulic Cylinders

### ISO 6020/2

Catalog M1151-3

October, 2016



Working pressure up to 210 bar  
Bore sizes – 25mm to 200mm  
12 Mounting Styles



[www.mfcp.com](http://www.mfcp.com)

**AV Series Cylinders**  
Up to 250 psi Permanently Lubricated

AV Series air cylinders are available in bore sizes from 1.50" through 20.00" and up to 250 psi operating pressure. Standard NFPA dimensions and proven Miller design features.

**HV2 Series Cylinders**  
Up to 3,000 psi

HV2 Series heavy-duty hydraulic cylinders are designed with proven Miller features for superior performance and may be used for working pressures up to 3,000 psi. Bore sizes from 1.50" through 20.00".

**CHD & CHE Series  
Compact Hydraulic Cylinders**  
CHD up to 207 bar & CHE up to 140 bar

CHE Series compact hydraulic cylinders are available in bore sizes from 20mm through 100mm and CHD Series in bore sizes 20mm through 80mm.

**JV Series Cylinders**  
400-2,300 psi  
Pressures are bore size dependent.

Our popularly-priced line of medium pressure hydraulic cylinders, with bore sizes from 1.00" to 8.00".

In line with our policy of continuing product improvement, specifications and information contained in this catalog are subject to change. Copyright ©2016 by Parker Hannifin Corporation. All rights reserved. PRINTED IN THE U.S.A.

**Warning**

FAILURE OR IMPROPER SELECTION OR IMPROPER USE OF THE PRODUCTS AND/OR SYSTEMS DESCRIBED HEREIN OR RELATED ITEMS CAN CAUSE DEATH, PERSONAL INJURY AND PROPERTY DAMAGE.

This document and other information from Parker Hannifin Corporation, its subsidiaries and authorized distributors provide product and/or system options for further investigation by users having technical expertise. It is important that you analyze all aspects of your application, including consequences of any failure and review the information concerning the product or system in the current product catalog. Due to the variety of operating conditions and applications for these products or systems, the user, through its own analysis and testing, is solely responsible for making the final selection of the products and systems and assuring that all performance, safety and warning requirements of the application are met.

The product described herein, including without limitation, product features, specifications, designs, availability and pricing, are subject to change by Parker Hannifin Corporation and its subsidiaries at any time without notice.

**Offer of Sale**

The items described in this document are hereby offered for sale by Parker Hannifin Corporation, its subsidiaries or its authorized distributors. This offer and its acceptance are governed by provisions stated on a separate page of the document entitled 'Offer of Sale'.

<b>Contents</b>	<b>Page</b>
Introduction.....	2
MHP Specifications .....	3
Mounting Styles and Applications.....	3
Design Features and Benefits .....	4-5
Piston Rod End Data and Threads.....	7
Cylinder Dimensions.....	8
Double Rod Cylinders.....	12
Rod and Cap End Accessories.....	13
Mounting Information.....	16-17
Theoretical Push & Pull Forces and Stroke Factors.....	18
Piston Rod Sizes, Stop Tubes and Long Stroke Cylinders .....	19
Cushioning.....	20-22
Pressure Limitations .....	22
Seals and Fluids.....	23
Ports, Locations and Piston Speeds, Weights.....	24-25
Optional Features .....	26
Replacement Parts and Service .....	28-29
How to Order Cylinders .....	30-31
Cylinder Safety Guide.....	32-33

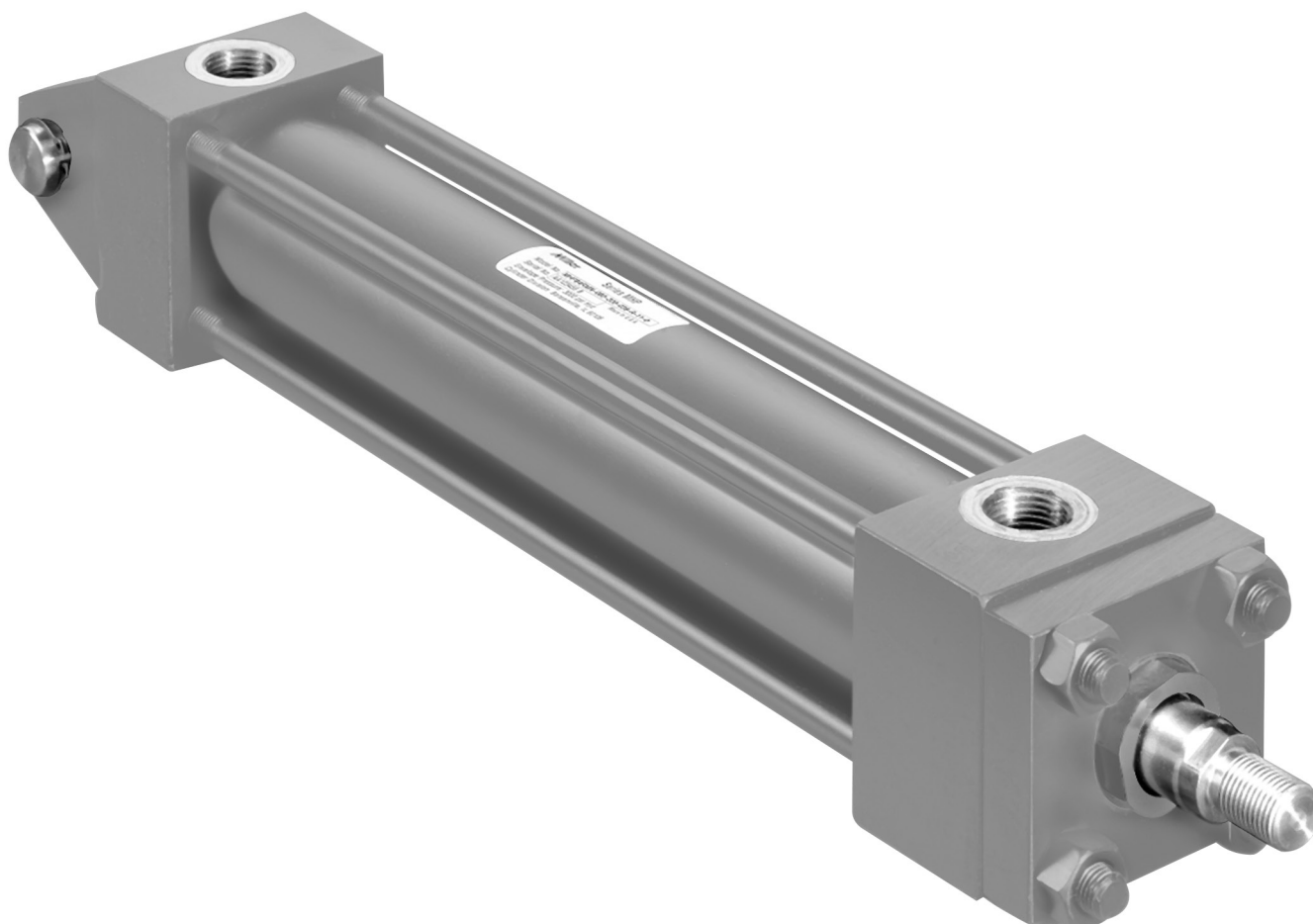
<b>Index</b>	<b>Page</b>
Accessories .....	13
Air Bleeds .....	4, 26
Cushioning.....	20-22
Cylinder Dimensions.....	8
Design Features .....	4, 5
Double Rod Cylinders.....	12
Forces – Push and Pull .....	18
Bushing Drains .....	5, 26
How to Order Cylinders .....	30
Model Numbers .....	31
Mounting Styles and Information .....	3, 16-17
Piston Rod End Data.....	7
Piston Rod Size Selection .....	19
Piston and Seal Types.....	5, 26
Ports – Standard and Oversize .....	24-25
Pressure Ratings and Limitations.....	22
Repairs .....	28-29
Seals and Fluids .....	23
Spare Parts.....	28
Speed Limitations .....	24
Stop Tubes .....	19
Stroke Adjusters .....	26
Stroke Factors .....	18
Stroke Tolerances .....	17
Thrust Keys .....	16
Water Service .....	23
Weights.....	25

## Miller MHP Series Metric Hydraulic Cylinders

As a world leader in the design and manufacture of pneumatic and hydraulic cylinders, Miller Fluid Power introduces the MHP Series *metric* hydraulic cylinder. Miller Fluid Power's MHP Series cylinders are designed to meet the requirements of ISO 6020/2 (1991), 160 bar Compact Series.

MHP Series cylinders may be used for working pressures up to 210 bar.

Miller Fluid Power MHP Series cylinders are the true *world standard*, available all over the globe from worldwide manufacturing facilities.



### Introduction

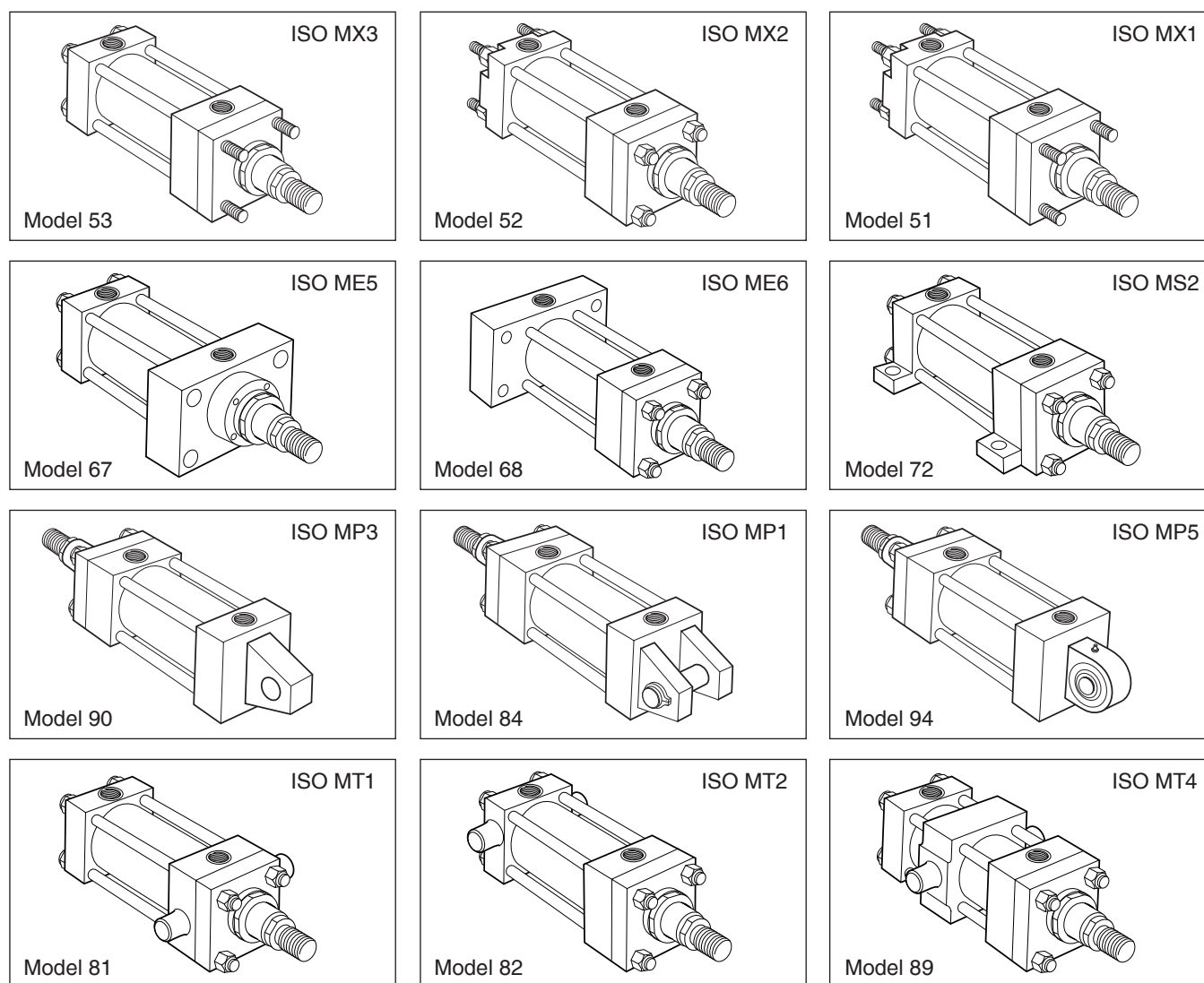
The MHP Series cylinders described in this catalog are 160 bar Compact Series cylinders to ISO 6020/2 rated for use at working pressures up to 210 bar. They have been designed to satisfy the requirements of a wide range of industries in which cylinders to ISO standards are specified.

In addition to the standard cylinders featured in this catalog, MHP cylinders can be designed to suit customer requirements. Our engineers will be pleased to advise on unique designs to suit specific applications.

**MHP Series Standard Features and Specifications**

- ISO 6020/2 mounting interchangeable
- 12 standard mounting styles
- Up to 3 rod sizes per bore
- Wide range of mounting accessories
- Up to 3 male and 3 female rod end threads per bore
- Bore sizes – 25mm to 200mm
- Strokes – available in any practical stroke length
- Working pressure up to 210 bar
- Piston rods – 12mm to 140mm
- Single and Double rod designs
- Cushions available at either or both ends
- Temperature Range – -20°C to 150°C depending on seal type
- Seal types to suit a wide variety of operating environments

*In line with our policy of continuing product improvement, specifications in this catalog are subject to change.*

**Available Mountings**

## Here is the inside story of why the MHP Series is your best choice in a metric heavy duty hydraulic cylinder...

### 1 Piston Rod

Rod seal life is maximized by manufacturing piston rods from precision ground, high tensile carbon alloy steel, hard chrome plated and polished to 0.2µm max. Piston rods are induction case hardened to Rockwell C54 minimum before chrome plating, resulting in a dent-resistant surface.

### 2 Bushing

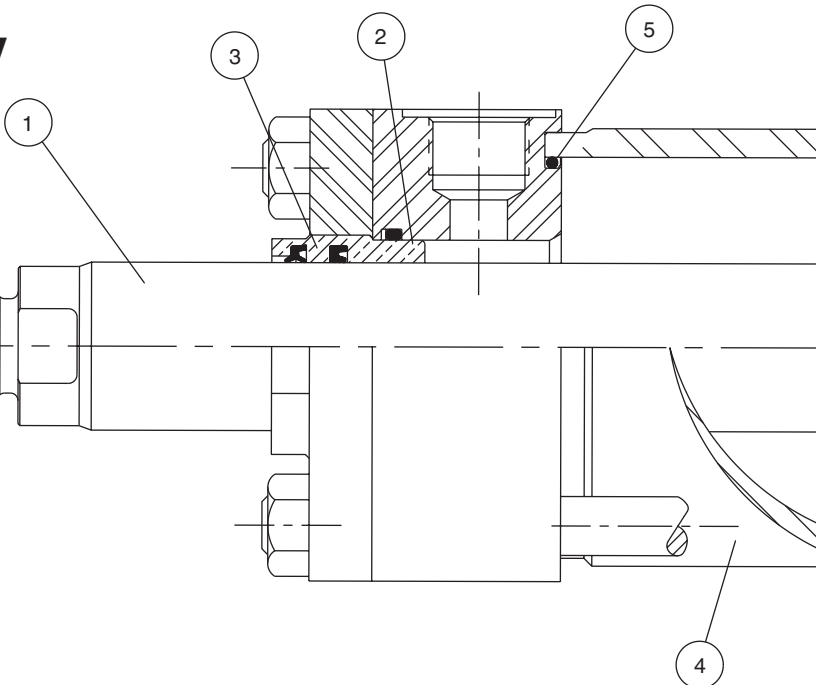
Continuous lubrication, and therefore longer bushing life, are provided by the long iron bearing surface inboard of the primary seal. The bushing, complete with rod seals, can easily be removed without dismantling the cylinder and without special tools, so servicing is quicker – and therefore more economical.

### 3 Rod Seals

The Tuff Seal primary seal has a series of sealing edges which take over successively as pressure increases, providing efficient sealing under all operating conditions. On the return stroke the serrations act as a check valve, allowing the oil adhering to the rod to pass back into the cylinder.

The double lip wiperseal acts as a secondary seal, trapping excess lubricating film in the chamber between the wiper and lip seals. Its outer lip prevents the ingress of dirt into the cylinder, extending the life of gland and seals.

The Tuff Seal is manufactured from an enhanced polyurethane, giving efficient retention of pressurized fluid and long service life.



### 4 Cylinder Tube

Strict quality control standards and precision manufacture ensure that all tubes meet rigid standards of straightness, roundness and surface finish. The steel tubing is surface finished to minimize internal friction and prolong seal life.

### 5 Cylinder Tube End Seals

To make sure that the cylinder tube remains leaktight, even under pressure shock conditions, Miller Fluid Power utilizes pressure-energized tube end seals.

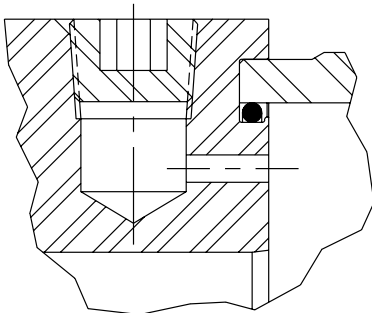
### 6 One-Piece Piston

A long thread engagement secures the piston to the piston rod and, as an added safety feature, pistons are secured by an anaerobic adhesive.

## Optional

### Air Bleeds

Available as an option at both ends, the air bleeds are recessed into the head and cap.



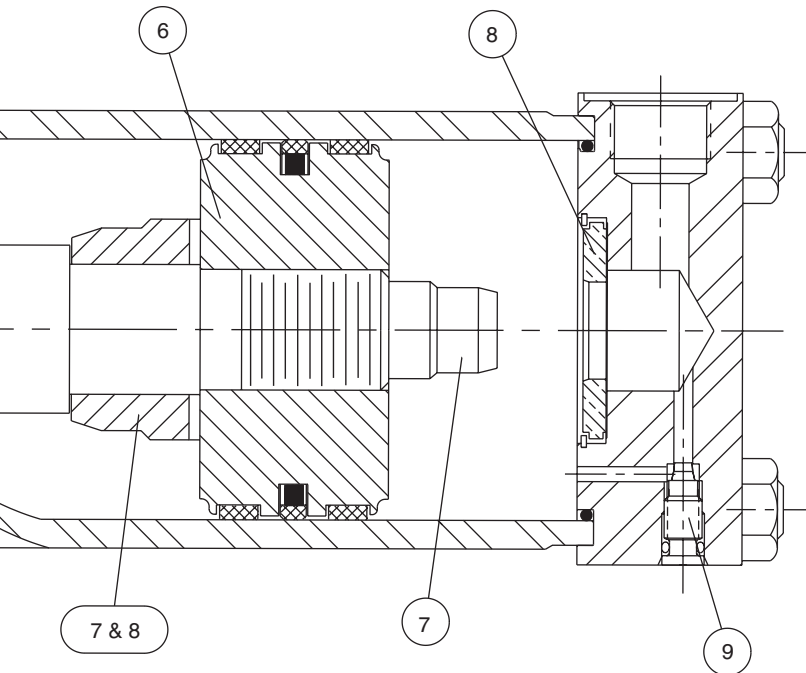
### Servo Cylinders

Servo cylinders permit fine control of acceleration, velocity and position in applications where very low friction and an absence of stick-slip are required. They may be used in conjunction with integral or external transducers. Servo cylinders combine low friction piston and bushing seals with specially selected tubes and rods. For low-friction applications – consult factory.

### Seal Classes

To accommodate the many types of fluids and the varying temperature ranges used in industry, Miller Fluid Power offers a range of rod bushing, piston and tube seals.



**7 Cushioning**

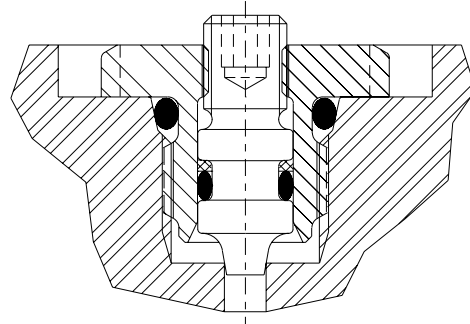
Progressive deceleration is available by using profiled cushions at the head and cap. The head end cushion is self aligning, while the polished cap end plunger is an integral part of the piston rod.

**8 Floating Cushion Bushings and Plungers**

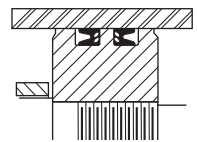
Closer tolerances – and therefore more effective cushioning – are permitted by the use of a floating cushion plunger at the head end of the cylinder, and a floating cushion bushing at the cap end. A slotted cushion plunger on the head end, and the floating bronze cushion bushing in the cap, provide minimum fluid restriction at the start of the return stroke. This allows full pressure to be applied over the entire area of the piston, providing full power and fast cycle times.

**9 Cushion Adjustment**

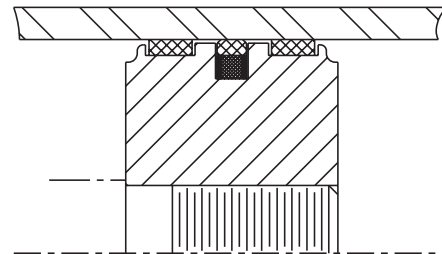
Needle valves are provided at both ends of the cylinder for precise cushion adjustment. 63mm bores and smaller contain the cartridge cushion assembly shown below.

**10 Piston Seals**

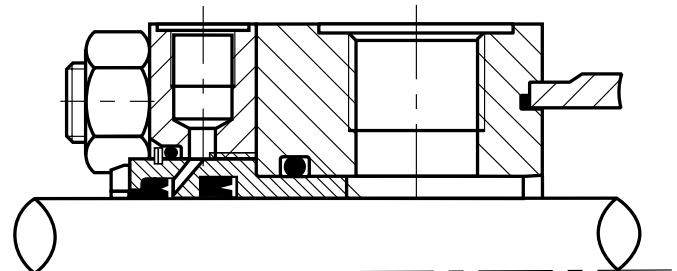
Standard on 25mm, 32mm and 40mm bore sizes, Miller's Lipseal™ Piston provides zero leakage under static conditions for hydraulic pressures up to 3000 psi. Seals are self-compensating to conform to variations in pressure, mechanical deflection, and wear. Back-up washers prevent extrusion.



Standard on 50mm bore sizes and larger, Miller's B style piston is a single seal design which incorporates two wear strips. This design provides smooth operation, long bearing life, and high load carrying capacity.

**Bushing Drains**

The accumulation of fluid behind the bushing wiperseal of long stroke cylinders, or cylinders with constant back pressure, can be relieved by specifying the option of a bushing drain. A port between the wiperseal and primary seal allows fluid to be piped back to a reservoir. By fitting a transparent tube between the port and the reservoir, fluid loss from concealed or inaccessible cylinders can be monitored to provide an early indication of the need for bushing servicing.



**ISO Cylinder Mounting Styles**

The standard range of Miller Fluid Power MHP Series cylinders comprises 12 ISO mounting styles to suit the majority of applications. General guidance for the selection of ISO cylinders is given below, with dimensional information about each mounting style shown on the following pages. Application-specific mounting information is shown in the mounting information section of this catalog.

**Extended Tie Rods**

Cylinders with 53, 52 and 51 mountings are suitable for straight line force transfer applications, and are particularly useful where space is limited. For compression (push) applications, cap end tie rod mountings are most appropriate; where the major load places the piston rod in tension (pull applications), head end mounting styles should be specified. Cylinders with tie rods extended at both ends may be attached to the machine member from either end, allowing the free end of the cylinder to support a bracket or switch.

**Flange Mounted Cylinders**

These cylinders are also suitable for use on straight line force transfer applications. Two flange mounting styles are available, offering either a head flange (67) or a cap flange (68). Selection of the correct flange mounting style depends on whether the major force applied to the load will result in compression (push) or tension (pull) stresses on the piston rod. For compression-type applications, the cap mounting style is most appropriate; where the major load places the piston rod in tension, a head mounting should be specified.

**Foot Mounted Cylinders**

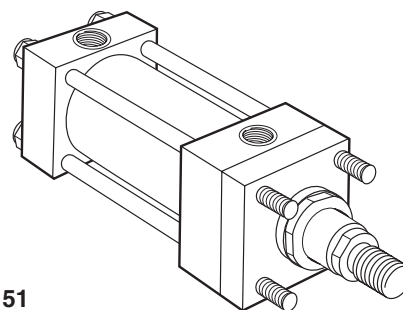
Model 72, foot mounted cylinders, do not absorb forces on their centerline. As a result, the application of force by the cylinder produces a moment which attempts to rotate the cylinder about its mounting bolts. It is important, therefore, that the cylinder should be firmly secured to the mounting surface and that the load should be effectively guided to avoid side loads being applied to rod gland and piston bearings. A thrust key modification may be specified to provide positive cylinder location.

**Pivot Mountings**

Cylinders with pivot mountings, which absorb forces on their centerlines, should be used where the machine member to be moved travels in a curved path. Pivot mountings may be used for tension (pull) or compression (push) applications. Cylinders using a fixed clevis, models 84 and 90, may be used if the curved path of the piston rod travel is in a single plane; for applications where the piston rod will travel in a path on either side of the true plane of motion, a spherical bearing mounting 94 is recommended.

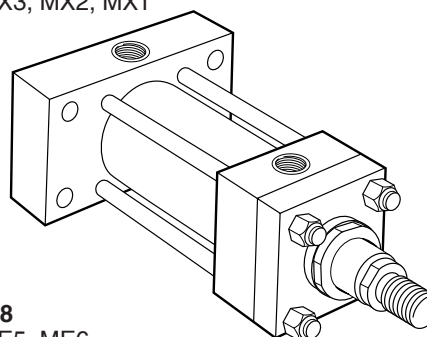
**Trunnion Mounted Cylinders**

These cylinders, models 81, 82 and 89, are designed to absorb force on their centerlines. They are suitable for tension (pull) or compression (push) applications, and may be used where the machine member to be moved travels in a curved path in a single plane. Trunnion pins are designed for shear loads only and should be subjected to minimum bending stresses.



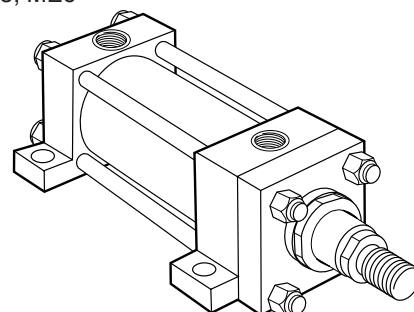
**Models 53, 52, 51**  
ISO Styles MX3, MX2, MX1

53



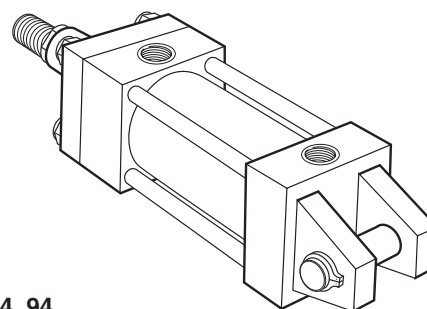
**Models 67, 68**  
ISO Styles ME5, ME6

68



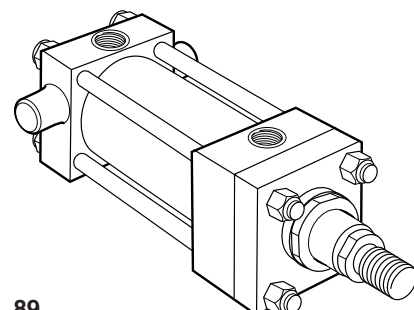
**Model 72**  
ISO Style MS2

72



**Models 90, 84, 94**  
ISO Styles MP3, MP1, MP5

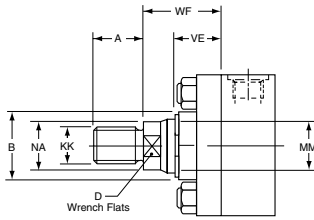
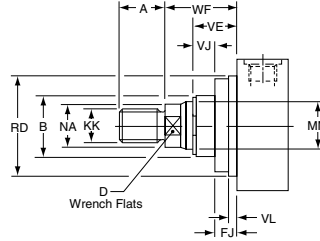
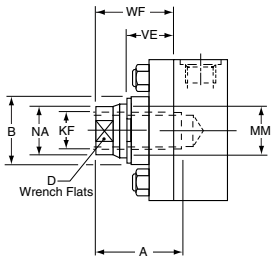
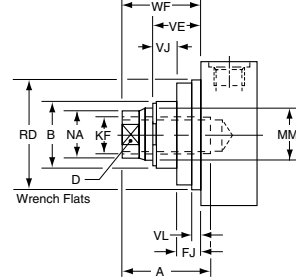
84



**Models 81, 82, 89**  
ISO Styles MT1, MT2, MT4

82



**Piston Rod End Data and Threads****Metric Hydraulic Cylinders  
MHP Series****Thread Styles M & S –  
All Except 67 Mount****Thread Styles M & S –  
67 Mount****Thread Style T –  
All Except 67 Mount****Thread Style T –  
67 Mount****Thread Styles M & S**

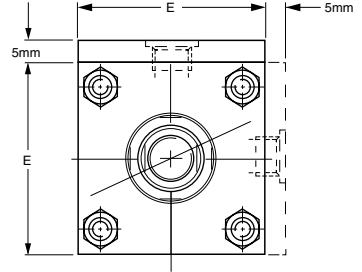
The smallest diameter rod end thread for each bore size is designated Style M. When the same rod end thread is supplied with an oversize rod it is designated Style S.

**Thread Style T –  
Short Stroke Cylinders**

Style T (female) rod ends should not be used on 160mm or 200mm bore cylinders with a stroke of 50mm or less. Please consult the factory, with details of the application.

**Thread Style X**

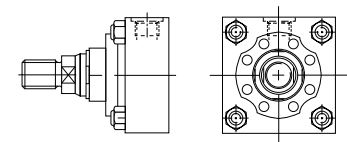
Non-standard piston rod ends are designated 'Style X'. A dimensional sketch or description should accompany the order. Please specify dimensions KK or KF, A, rod stand out WF and thread type.

**25 & 32mm Bore Cylinders**

5mm extra height applies to port face at head end only.

**Bushing Retainer –  
160 and 200mm Bore**

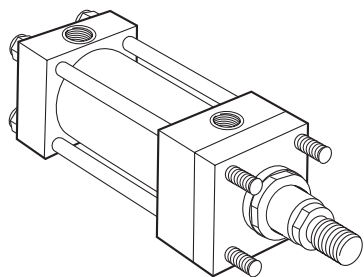
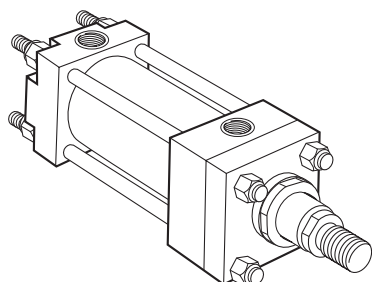
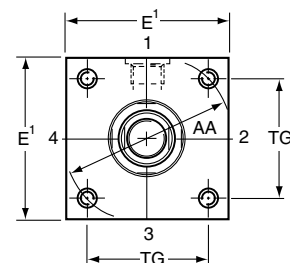
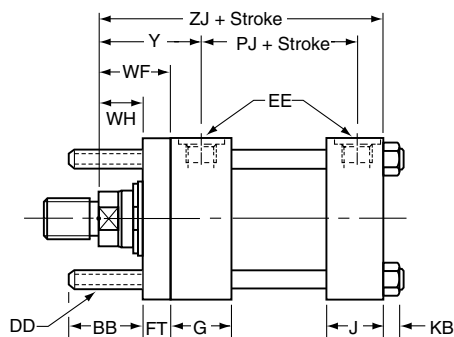
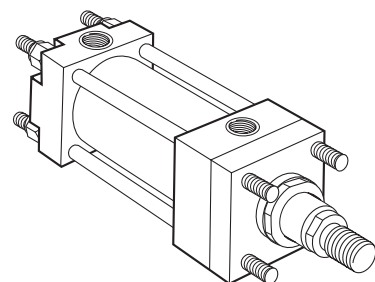
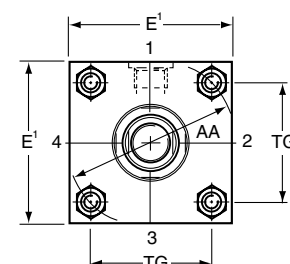
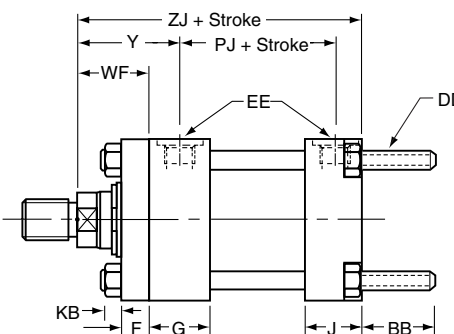
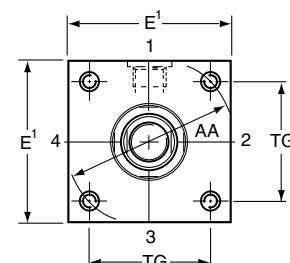
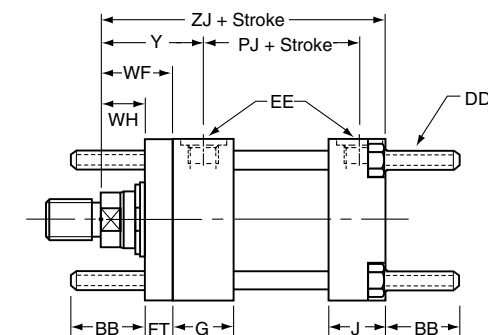
On all 160mm and 200mm bore ISO mounting styles except 53 and 51, the bushing retainer is separately bolted to the head, as shown.

**Piston Rod End Dimensions**

Bore Ø	Rod No.	MM Rod Ø	Style M		Style S		Style T		B f9	D	NA	VE	WF	67 Mount Only			
			KK	A	KK	A	KF	A						VL min	RD f8	VJ	FJ
25	1	12	M10x1.25	14	-	-	M8x1	14	24	10	11	16	25	3	38	6	10
	2	18	M14x1.5	18	M10x1.25	14	M12x1.25	18	30	15	17	16					
32	1	14	M12x1.25	16	-	-	M10x1.25	16	26	12	13	22	35	3	42	12	10
	2	22	M16x1.5	22	M12x1.25	16	M16x1.5	22	34	19	21	22					
40	1	18	M14x1.5	18	-	-	M12x1.25	18	30	15	17	16	35	3	62	6	10
	2	28	M20x1.5	28	M14x1.5	18	M20x1.5	28	42	22	26	22				12	
50	1	22	M16x1.5	22	-	-	M16x1.5	22	34	19	21	22	41	4	74	6	16
	2	36	M27x2	36	M16x1.5	22	M27x2	36	50	30	34	25				9	
	3	28	M20x1.5	28	M16x1.5	22	M20x1.5	28	42	22	26	22				6	
63	1	28	M20x1.5	28	-	-	M20x1.5	28	42	22	26	22	48	4	75	6	16
	2	45	M33x2	45	M20x1.5	28	M33x2	45	60	41	43	29				13	
	3	36	M27x2	36	M20x1.5	28	M27x2	36	50	30	34	25				9	
80	1	36	M27x2	36	-	-	M27x2	36	50	30	34	25	51	4	82	5	20
	2	56	M42x2	56	M27x2	36	M42x2	56	72	50	54	29				9	
	3	45	M33x2	45	M27x2	36	M33x2	45	60	41	43	29					
100	1	45	M33x2	45	-	-	M33x2	45	60	41	43	29	57 <sup>1</sup>	5	92	7	22
	2	70	M48x2	63	M33x2	45	M48x2	63	88	60	68	32				10	
	3	56	M42x2	56	M33x2	45	M42x2	56	72	50	54	29				7	
125	1	56	M42x2	56	-	-	M42x2	56	72	50	54	29	57 <sup>1</sup>	5	105	9	20
	2	90	M64x3	85	M42x2	56	M64x3	85	108	80	88	32				10	
	3	70	M48x2	63	M42x2	56	M48x2	63	88	60	68	32					
160	1	70	M48x2	63	-	-	M48x2	63	88	60	68	32	57 <sup>1</sup>	5	125	10	22
	2	110	M80x3	95	M48x2	63	M80x3	95	133	100	108	32				7	
	3	90	M64x3	85	M48x2	63	M64x3	85	108	80	88	32					
200	1	90	M64x3	85	-	-	M64x3	85	108	80	88	32	57 <sup>1</sup>	5	150	10	22
	2	140	M100x3	112	M64x3	85	M100x3	112	163	128	138	32				7	
	3	110	M80x3	95	M64x3	85	M80x3	95	133	100	108	32					

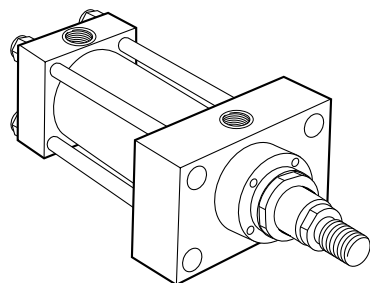
All dimensions are in millimeters unless otherwise stated.

<sup>1</sup> Use WD dimension for mounting Model 81 in 100mm - 200mm bore. See Model 81 page for details.

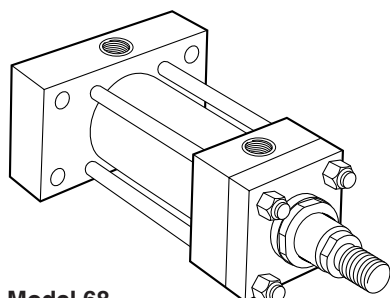
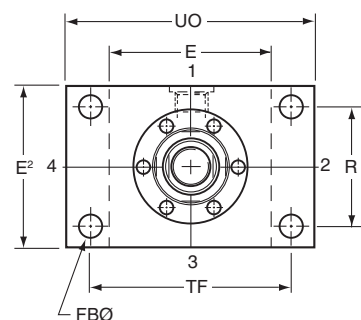
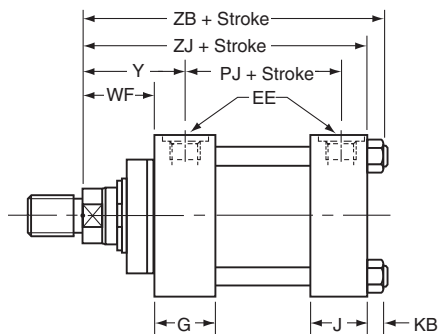
**Model 53**Tie Rods Extended Head End  
(ISO Style MX3)**Model 52**Tie Rods Extended Cap End  
(ISO Style MX2)**Model 51**Tie Rods Extended Both Ends  
(ISO Style MX1)<sup>1</sup> Head depth increased by 5mm to accommodate port on 25mm and 32mm bore cylinders – see piston rod end data page.**Dimensions – 53, 52, 51** See also Rod End Dimensions and Mounting Information

Bore Ø	AA	BB	DD	E	EE BSP/G inches	F	FT	G	J	KB	TG	WF	WH	Y	+ Stroke	
															PJ	ZJ
25	40	19	M5x0.8	40 <sup>1</sup>	1/4	10	10	40	25	4	28.3	25	15	50	53	114
32	47	24	M6x1	45 <sup>1</sup>	1/4	10	10	40	25	5	33.2	35	25	60	56	128
40	59	35	M8x1	63	3/8	10	10	45	38	6.5	41.7	35	25	62	73	153
50	74	46	M12x1.25	75	1/2	16	16	45	38	10	52.3	41	25	67	74	159
63	91	46	M12x1.25	90	1/2	16	16	45	38	10	64.3	48	32	71	80	168
80	117	59	M16x1.5	115	3/4	20	20	50	45	13	82.7	51	31	77	93	190
100	137	59	M16x1.5	130	3/4	22	22	50	45	13	96.9	57	35	82	101	203
125	178	81	M22x1.5	165	1	22	22	58	58	18	125.9	57	35	86	117	232
160	219	92	M27x2	205	1	25	25	58	58	22	154.9	57	32	86	130	245
200	269	115	M30x2	245	1-1/4	25	25	76	76	24	190.2	57	32	98	165	299

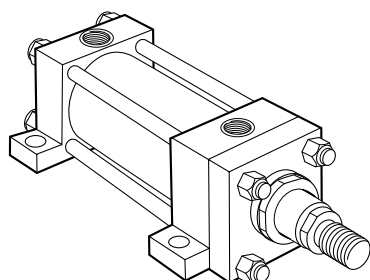
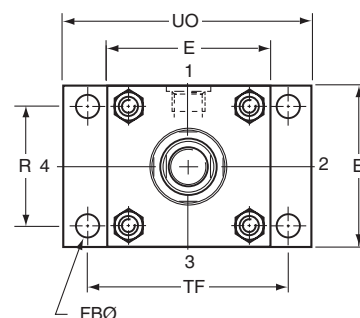
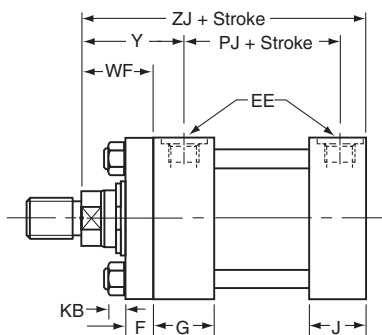
All dimensions are in millimeters unless otherwise stated.



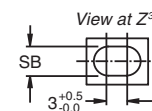
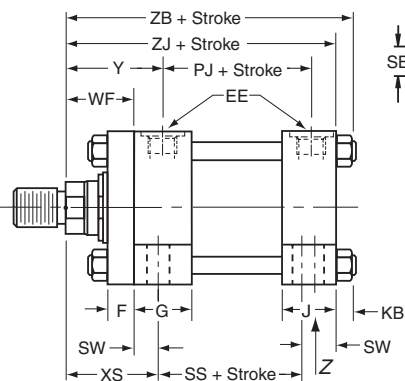
**Model 67**  
Head Rectangular Flange  
(ISO Style ME5)



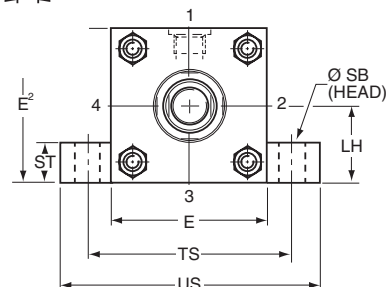
**Model 68**  
Cap Rectangular Flange  
(ISO Style ME6)



**Model 72**  
Side Lugs  
(ISO Style MS2)



A thrust key may be used with this mounting style.



<sup>1</sup> Head depth increased by 5mm to accommodate port on 25mm and 32mm bore cylinders, except Model 67 in port positions 2 and 4 – see port information.

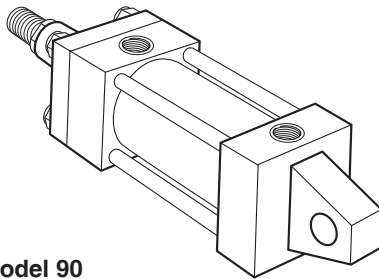
<sup>2</sup> On 25mm and 32mm bore Model 72 and Model 68 cylinders with port in position 2 or 4, head depth E is increased by 5mm in position 1.

<sup>3</sup> On 25mm and 32mm bore Model 72 cylinders both head and cap mounting holes are slotted (also both heads of double rod styles).

### Dimensions – 67, 68 & 72 See also Rod End Dimensions and Mounting Information.

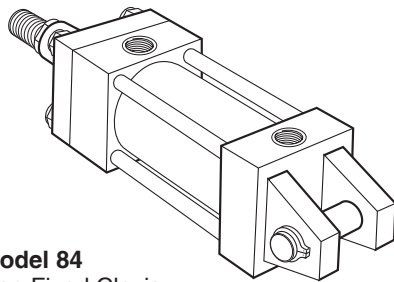
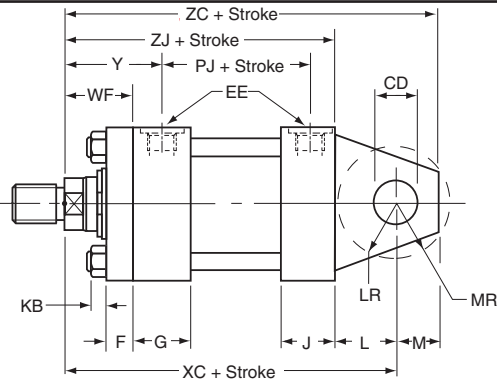
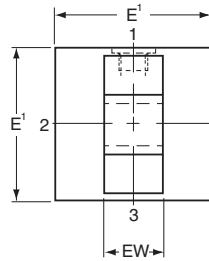
Bore Ø	E	EE BSP/G inches	F	FB	G	J	KB	LH h10	R	SB	ST	SW	TF	TS	UO	US	WF	XS	Y	+ Stroke			
																				PJ	SS	ZB	ZJ
25	40 <sup>1</sup>	1/4	10	5.5	40	25	4	19	27	6.6	8.5	8	51	54	65	72	25	33	50	53	73	121	114
32	45 <sup>1</sup>	1/4	10	6.6	40	25	5	22	33	9	12.5	10	58	63	70	84	35	45	60	56	73	137	128
40	63	3/8	10	11	45	38	6.5	31	41	11	12.5	10	87	83	110	103	35	45	62	73	98	166	153
50	75	1/2	16	14	45	38	10	37	52	14	19	13	105	102	130	127	41	54	67	74	92	176	159
63	90	1/2	16	14	45	38	10	44	65	18	26	17	117	124	145	161	48	65	71	80	86	185	168
80	115	3/4	20	18	50	45	13	57	83	18	26	17	149	149	180	186	51	68	77	93	105	212	190
100	130	3/4	22	18	50	45	13	63	97	26	32	22	162	172	200	216	57	79	82	101	102	225	203
125	165	1	22	22	58	58	18	82	126	26	32	22	208	210	250	254	57	79	86	117	131	260	232
160	205	1	25	26	58	58	22	101	155	33	38	29	253	260	300	318	57	86	86	130	130	279	245
200	245	1-1/4	25	33	76	76	24	122	190	39	44	35	300	311	360	381	57	92	98	165	172	336	299

All dimensions are in millimeters unless otherwise stated.



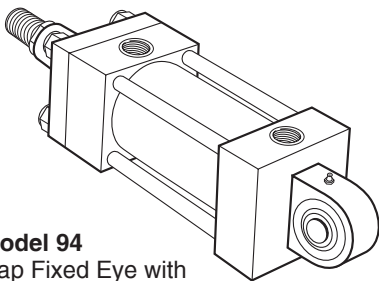
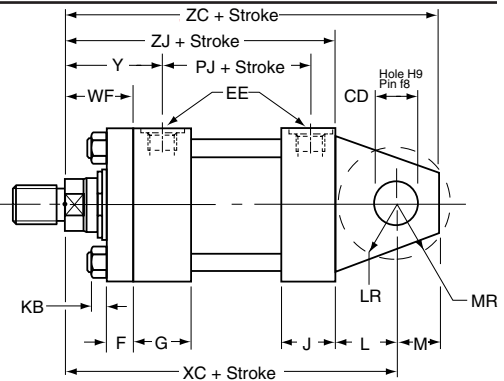
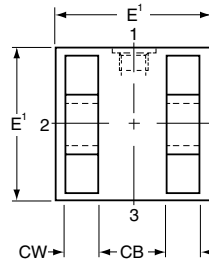
**Model 90**  
Cap Fixed Eye  
(ISO Style MP3)

Pivot pin not supplied



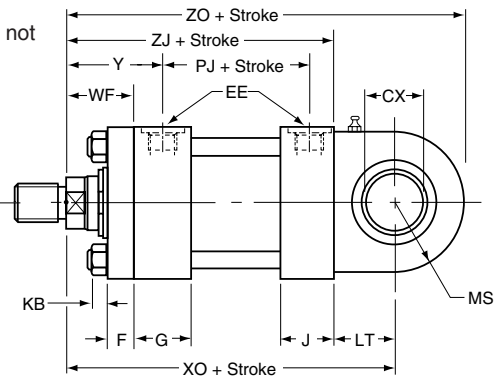
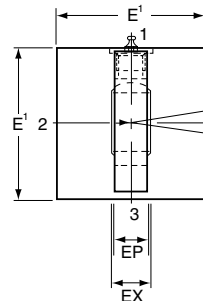
**Model 84**  
Cap Fixed Clevis  
(ISO Style MP1)

Supplied complete with pivot pin



**Model 94**  
Cap Fixed Eye with  
Spherical Bearing  
(ISO Style MP5)

Pivot pin not supplied. Grease fitting not supplied on bore sizes 25-40mm.

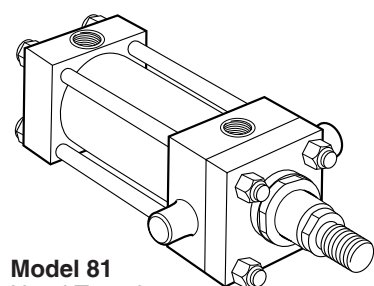


<sup>1</sup> Head depth increased by 5mm to accommodate port on 25mm and 32mm bore cylinders – see piston rod end data page.

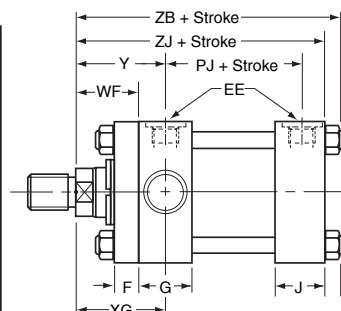
### Dimensions – 90, 84 & 94 See also Rod End Dimensions and Mounting Information.

Bore Ø	CB	CD	CW	CX	E	EE BSP/G inches	EP	EW	EX	F	G	J	KB	L	LR	LT	M	MR	MS	WF	Y	+ Stroke					
	A16	H9						h14											max			PJ	XC	XO	ZC	ZJ	ZO
25	12	10	6	12-0.008	40 <sup>1</sup>	1/4	8	12	10	10	40	25	4	13	12	16	10	12	20	25	50	53	127	130	137	114	150
32	16	12	8	16-0.008	45 <sup>1</sup>	1/4	11	16	14	10	40	25	5	19	17	20	12	15	22.5	35	60	56	147	148	159	128	170.5
40	20	14	10	20-0.012	63	3/8	13	20	16	10	45	38	6.5	19	17	25	14	16	29	35	62	73	172	178	186	153	207
50	30	20	15	25-0.012	76	1/2	17	30	20	16	45	38	10	32	29	31	20	25	33	41	67	74	191	190	211	159	223
63	30	20	15	30-0.012	90	1/2	19	30	22	16	45	38	10	32	29	38	20	25	40	48	71	80	200	206	220	168	246
80	40	28	20	40-0.012	115	3/4	23	40	28	20	50	45	13	39	34	48	28	34	50	51	77	93	229	238	257	190	288
100	50	36	25	50-0.012	130	3/4	30	50	35	22	50	45	13	54	50	58	36	44	62	57	82	101	257	261	293	203	323
125	60	45	30	60-0.015	165	1	38	60	44	22	58	58	18	57	53	72	45	53	80	57	86	117	289	304	334	232	384
160	70	56	35	80-0.015	205	1	47	70	55	25	58	58	22	63	59	92	59	59	100	57	86	130	308	337	367	245	437
200	80	70	40	100-0.020	245	1-1/4	57	80	70	25	76	76	24	82	78	116	70	76	120	57	98	165	381	415	451	299	535

All dimensions are in millimeters unless otherwise stated.



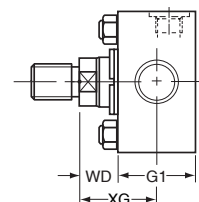
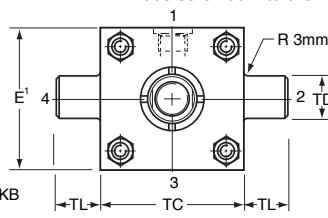
**Model 81**  
Head Trunnion  
(ISO Style MT1)



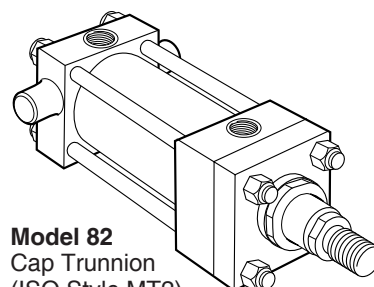
**25mm - 80mm Bore**  
Head / Retainer  
Construction and Rod Extension

**Notes:**

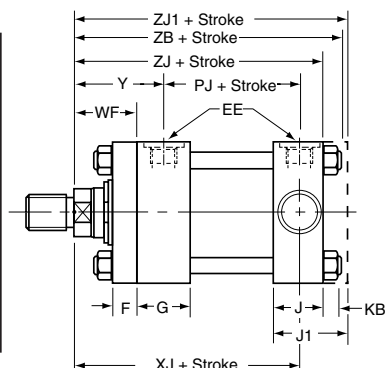
A one-piece head and retainer is used on 100mm-200mm bore sizes – G1 dimension. On 160 and 200mm bores, the bolted bushing is recessed, with tie rods screwed into the head.



**100mm - 200mm Bore**  
Head Construction  
and Rod Extension

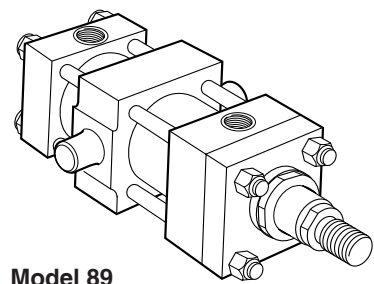
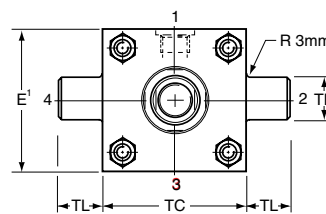


**Model 82**  
Cap Trunnion  
(ISO Style MT2)

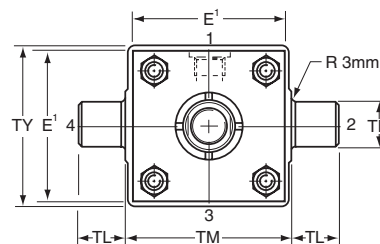
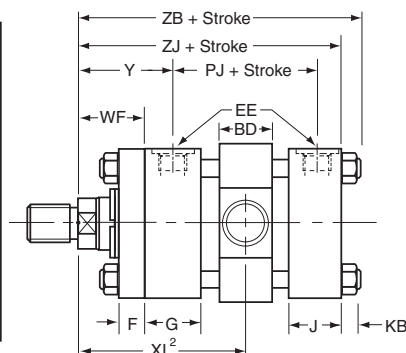


**Note:**

On 80-200mm bore cylinders, dimension J becomes J1. ZJ1 replaces ZB, and tie rods are screwed directly into the cap.



**Model 89**  
Intermediate Trunnion  
(ISO Style MT4)



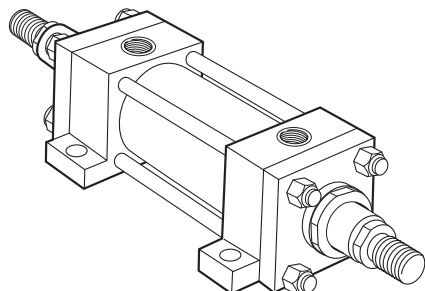
<sup>1</sup> Head depth increased by 5mm to accommodate port on 25mm and 32mm bore cylinders – see piston rod end data page.

<sup>2</sup> Dimensions to be specified by customer. See table below for minimum XI dimension.

**Dimensions – 81, 82 & 89** See also Rod End Dimensions and Mounting Information.

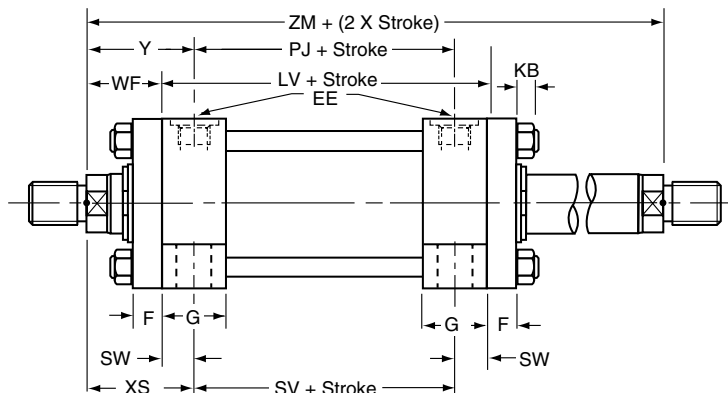
Bore Ø	BD	E	EE BSP/G inches	F	G	G1	J	J1	KB	TC	TD f8	TL	TM	TY	W	WF	XG	Y	+ Stroke					Model 89 min stroke	Min XI dim'n
																			PJ	XJ	ZJ	ZJ1	ZB		
25	20	40 <sup>1</sup>	1/4	10	40	-	25	-	4	38	12	10	48	45	-	25	44	50	53	101	114	-	121	10	78
32	25	45 <sup>1</sup>	1/4	10	40	-	25	-	5	44	16	12	55	54	-	35	54	60	56	115	128	-	137	10	90
40	30	63	3/8	10	45	-	38	-	6.5	63	20	16	76	76	-	35	57	62	73	134	153	-	166	15	97
50	40	76	1/2	16	45	-	38	-	10	76	25	20	89	89	-	41	64	67	74	140	159	-	176	15	107
63	40	90	1/2	16	45	-	38	-	10	89	32	25	100	95	-	48	70	71	80	149	168	-	185	15	114
80	50	115	3/4	20	50	-	45	50	13	114	40	32	127	127	-	51	76	77	93	168	190	194	212	20	127
100	60	130	3/4	22	50	72	45	58	13	127	50	40	140	140	35	57	71	82	101	187	203	216	225	20	138
125	73	165	1	22	58	80	58	71	18	165	63	50	178	178	35	57	75	86	117	209	232	245	260	25	153
160	90	205	1	25	58	88	58	88	22	203	80	63	215	216	32	57	75	86	130	230	245	275	279	30	161
200	110	245	1-1/4	25	76	108	76	108	24	241	100	80	279	280	32	57	85	98	165	276	299	330	336	30	190

All dimensions are in millimeters unless otherwise stated.



#### Double Rod Cylinder

Available with Models 53, 51, 67, 72, 81, 89 (Model 72 illustrated)



#### Mounting Styles and Codes

Double rod cylinders are denoted by a 'D' in the MHP cylinder model code.

#### Dimensions

To obtain dimensional information for double rod cylinders, first select the desired mounting style by referring to the corresponding single rod model. Dimensions for the appropriate single rod model should be supplemented by those from the table opposite to provide a full set of dimensions.

#### Minimum Stroke Length – Style T Rod End

Where a style T (female) piston rod end is required on a double rod cylinder with a stroke of 80mm or less, and a bore of 80mm or above, please consult the factory.

#### Cushioning

Double rod cylinders can be supplied with cushions at either or both ends. Cushioning requirements should be specified by inserting the proper letter in the order number. See how-to-order page of this catalog.

#### Double Rod Cylinders

For double rod cylinders, specify rod diameter and rod end symbols for both piston rods. See how-to-order page for instructions.

Bore Ø	Rod		Add Stroke			Add 2x Stroke
	MM	Ø	LV	PJ	SV	ZM
25	12		104	53	88	154
	18					
32	14		108	56	88	178
	22					
40	18		125	73	105	195
	28					
50	22		125	74	99	207
	36					
	28					
63	28		127	80	93	223
	45					
	36					
80	36		144	93	110	246
	56					
	45					
100	45		151	101	107	265
	70					
	56					
125	56		175	117	131	289
	90					
	70					
160	70		188	130	130	302
	110					
	90					
200	90		242	160	172	356
	140					
	110					

All dimensions are in millimeters unless otherwise stated.



**Accessory Selection**

Accessories for the rod end of a cylinder are selected by reference to the rod end thread, while the same accessories, when used at the cap end, are selected by cylinder bore size. See tables of part numbers below, and on the following pages.

The rod clevises, plain rod eyes and spherical bearings fitted as accessories to the rod end have the same pin diameters as those used at the cylinder cap ends of the corresponding mounting styles – 90, 84 and 94 – when fitted with the standard rod diameter, or oversize rods with Style S rod end.

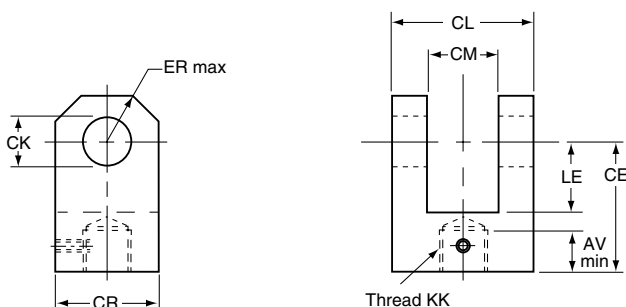
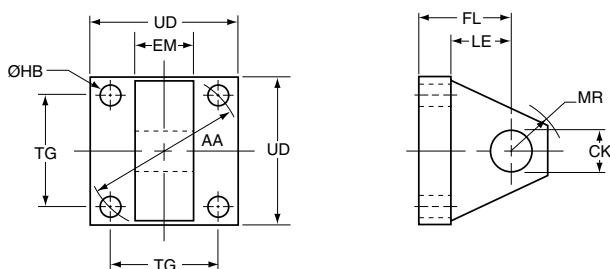
**Rod and Cap End Accessories**

Accessories for the MHP ISO cylinder include:

- Rod End** – rod clevis, eye bracket and pivot pin  
 – plain rod eye, clevis bracket and pivot pin  
 – rod eye with spherical bearing
- Cap End** – eye bracket for Model 84 mounting  
 – clevis bracket for Model 90 mounting  
 – pivot pin for eye bracket and clevis bracket

**Rod Clevis, Eye Bracket and Pivot Pin Assembly**

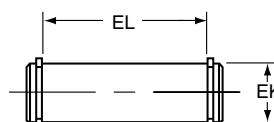
Thread KK	Nominal Force kN	Weight kg
M10x1.25	8	0.3
M12x1.25	12.5	0.6
M14x1.5	20	0.8
M16x1.5	32	2.2
M20x1.5	50	2.7
M27x2	80	5.9
M33x2	125	9.4
M42x2	200	17.8
M48x2	320	26.8
M64x3	500	39.0

**Rod Clevis****Eye Bracket****Rod Clevis Dimensions**

Part No.	AV	CE	CK H9	CL	CM A16	CR	ER	KK	LE	Weight kg
057-RC006-M10-125	14	32	10	26	12	20	12	M10x1.25	14	0.08
057-RC006-M12-125	16	36	12	34	16	32	17	M12x1.25	19	0.25
057-RC006-M14-150	18	38	14	42	20	30	17	M14x1.5	19	0.32
057-RC006-M16-150	22	54	20	62	30	50	29	M16x1.5	32	1.0
057-RC006-M20-150	28	60	20	62	30	50	29	M20x1.5	32	1.1
057-RC006-M27-200	36	75	28	83	40	60	34	M27x2	39	2.3
057-RC006-M33-200	45	99	36	103	50	80	50	M33x2	54	2.6
057-RC006-M42-200	56	113	45	123	60	102	53	M42x2	57	5.5
057-RC006-M48-200	63	126	56	143	70	112	59	M48x2	63	7.6
057-RC006-M64-300	85	168	70	163	80	146	78	M64x3	83	13.0

**Eye Bracket Dimensions**

Part No.	CK H9	EM h13	FL	MR max	LE min	AA	HB	TG	UD
057-EB201-025-010	10	12	23	12	13	40	5.5	28.3	40
057-EB201-032-012	12	16	29	17	19	47	6.6	33.2	45
057-EB201-040-014	14	20	29	17	19	59	9	41.7	65
057-EB201-050-020	20	30	48	29	32	74	13.5	52.3	75
057-EB201-063-020	20	30	48	29	32	91	13.5	64.3	90
057-EB201-080-028	28	40	59	34	39	117	17.5	82.7	115
057-EB201-100-036	36	50	79	50	54	137	17.5	96.9	130
057-EB201-125-045	45	60	87	53	57	178	26	125.9	165
057-EB201-160-056	56	70	103	59	63	219	30	154.9	205
057-EB201-200-070	70	80	132	78	82	269	33	190.2	240

**Pivot Pin for Clevis Bracket and Plain Rod Eye – Dimensions**

Part No.	EK f8	EL	Weight kg
057-PP009-010	10	29	0.02
057-PP009-012	12	37	0.05
057-PP009-014	14	45	0.08
057-PP009-020	20	66	0.2
057-PP009-028	28	87	0.4
057-PP009-036	36	107	1.0
057-PP009-045	45	129	1.8
057-PP009-056	56	149	4.2
057-PP009-070	70	169	6.0

**Eye Bracket – Cap End Mounting for Model 84**

Bore Ø	Eye Bracket	Nominal Force kN	Weight kg
25	057-EB201-025-010	8	0.2
32	057-EB201-032-012	12.5	0.3
40	057-EB201-040-014	20	0.4
50	057-EB201-050-020	32	1.0
63	057-EB201-063-020	50	1.4
80	057-EB201-080-028	80	3.2
100	057-EB201-100-036	125	5.6
125	057-EB201-125-045	200	10.5
160	057-EB201-160-056	320	15.0
200	057-EB201-200-070	500	20.0

All dimensions are in millimeters unless otherwise stated.

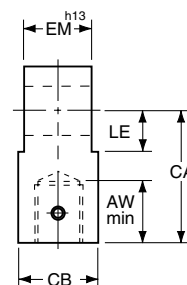
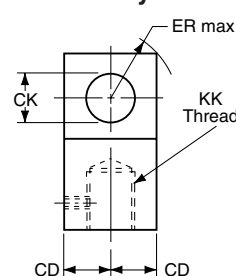
## Plain Rod Eye, Clevis Bracket and Pivot Pin

Thread KK	Plain Rod Eye	Clevis Bracket	Pivot Pin	Nominal Force kN	Weight kg
M10x1.25	057-RE004-M10-125	057-CB001-010	057-PP009-010	8	0.5
M12x1.25	057-RE004-M12-125	057-CB001-012	057-PP009-012	12.5	1.0
M14x1.5	057-RE004-M14-150	057-CB001-014	057-PP009-014	20	1.3
M16x1.5	057-RE004-M16-150	057-CB001-020	057-PP009-020	32	3.2
M20x1.5	057-RE004-M20-150	057-CB001-020	057-PP009-020	50	3.8
M27x2	057-RE004-M27-200	057-CB001-028	057-PP009-028	80	6.9
M33x2	057-RE004-M33-200	057-CB001-036	057-PP009-036	125	12.5
M42x2	057-RE004-M42-200	057-CB001-045	057-PP009-045	200	26.0
M48x2	057-RE004-M48-200	057-CB001-056	057-PP009-056	320	47.0
M64x3	057-RE004-M64-300	057-CB001-070	057-PP009-070	500	64.0

## Plain Rod Eye Dimensions

Part No.	AW	CA	CB	CD	CK H9	EM h13	ER	KK	LE	Weight kg
057-RE004-M10-125	14	32	18	9	10	12	12	M10x1.25	13	0.08
057-RE004-M12-125	16	36	22	11	12	16	17	M12x1.25	19	0.15
057-RE004-M14-150	18	38	20	12.5	14	20	17	M14x1.5	19	0.22
057-RE004-M16-150	22	54	30	17.5	20	30	29	M16x1.5	32	0.5
057-RE004-M20-150	28	60	30	20	20	30	29	M20x1.5	32	1.1
057-RE004-M27-200	36	75	40	25	28	40	34	M27x2	39	1.5
057-RE004-M33-200	45	99	50	35	36	50	50	M33x2	54	2.5
057-RE004-M42-200	56	113	65	50	45	60	53	M42x2	57	4.2
057-RE004-M48-200	63	126	90	56	56	70	59	M48x2	63	11.8
057-RE004-M64-300	85	168	110	70	70	80	78	M64x3	83	17.0

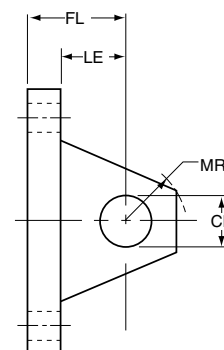
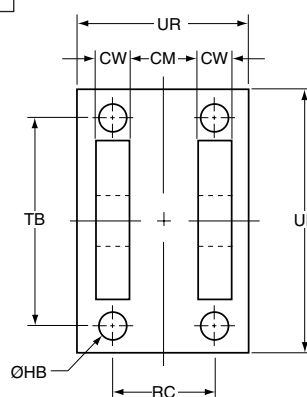
## Plain Rod Eye



## Clevis Bracket Dimensions

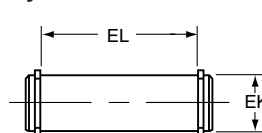
Part No.	CK H9	CM A16	CW	FL	MR max	HB	LE min	RC	TB	UR	UH
057-CB001-010	10	12	6	23	12	5.5	13	18	47	35	60
057-CB001-012	12	16	8	29	17	6.6	19	24	57	45	70
057-CB001-014	14	20	10	29	17	9	19	30	68	55	85
057-CB001-020	20	30	15	48	29	13.5	32	45	102	80	125
057-CB001-028	28	40	20	59	34	17.5	39	60	135	100	170
057-CB001-036	36	50	25	79	50	17.5	54	75	167	130	200
057-CB001-045	45	60	30	87	53	26	57	90	183	150	230
057-CB001-056	56	70	35	103	59	30	63	105	242	180	300
057-CB001-070	70	80	40	132	78	33	82	120	300	200	360

## Clevis Bracket



## Clevis Bracket – For Model 90

Bore Ø	Clevis Bracket	Nominal Force kN	Weight kg
25	057-CB001-010	8	0.4
32	057-CB001-012	12.5	0.8
40	057-CB001-014	20	1.0
50	057-CB001-020	32	2.5
63	057-CB001-020	50	2.5
80	057-CB001-028	80	5.0
100	057-CB001-036	125	9.0
125	057-CB001-045	200	20.0
160	057-CB001-056	320	31.0
200	057-CB001-070	500	41.0

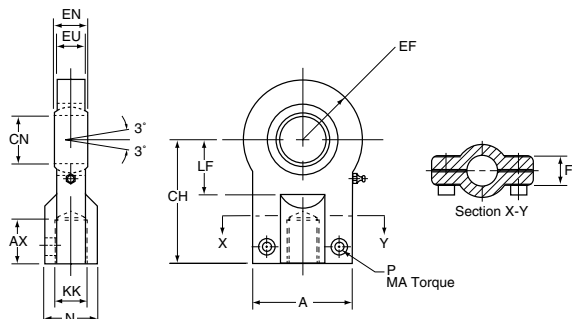
Pivot Pin for  
Clevis Bracket  
and Plain Rod  
Eye – Dimensions

Part No.	EK f8	EL	Weight kg
057-PP009-010	10	29	0.02
057-PP009-012	12	37	0.05
057-PP009-014	14	45	0.08
057-PP009-020	20	66	0.2
057-PP009-028	28	87	0.4
057-PP009-036	36	107	1.0
057-PP009-045	45	129	1.8
057-PP009-056	56	149	4.2
057-PP009-070	70	169	6.0

All dimensions are in millimeters unless otherwise stated.

### Rod Eye with Spherical Bearing, Mounting Bracket and Pivot Pin

Thread KK	Rod Eye with Spherical Bearing	Mounting Bracket and Pivot Pin	Nominal Force kN	Weight kg
M10x1.25	057-SRE03-M10-125	057-SCB01-012	8	0.2
M12x1.25	057-SRE03-M12-125	057-SCB01-016	12.5	0.3
M14x1.5	057-SRE03-M14-150	057-SCB01-020	20	0.4
M16x1.5	057-SRE03-M16-150	057-SCB01-025	32	0.7
M20x1.5	057-SRE03-M20-150	057-SCB01-030	50	1.3
M27x2	057-SRE03-M27-200	057-SCB01-040	80	2.3
M33x2	057-SRE03-M33-200	057-SCB01-050	125	4.4
M42x2	057-SRE03-M42-200	057-SCB01-060	200	8.4
M48x2	057-SRE03-M48-200	057-SCB01-080	320	15.6
M64x3	057-SRE03-M64-300	057-SCB01-100	500	28.0



### Rod Eye with Spherical Bearing

All spherical bearings should be re-packed with grease when servicing. In unusual or severe working conditions, consult the factory regarding the suitability of the bearing chosen.

### Rod Eye with Spherical Bearing Dimensions

Part No.	A max	AX min	EF max	CH	CN	EN	EU	FU	KK	LF min	N max	MA max Nm	P
057-SRE03-M10-125	40	15	20	42	12 -0.008	10 -0.12	8	13	M10x1.25	16	17	10	M6
057-SRE03-M12-125	45	17	22.5	48	16 -0.008	14 -0.12	11	13	M12x1.25	20	21	10	M6
057-SRE03-M14-150	55	19	27.5	58	20 -0.012	16 -0.12	13	17	M14x1.5	25	25	25	M8
057-SRE03-M16-150	62	23	32.5	68	25 -0.012	20 -0.12	17	17	M16x1.5	30	30	25	M8
057-SRE03-M20-150	80	29	40	85	30 -0.012	22 -0.12	19	19	M20x1.5	35	36	45	M10
057-SRE03-M27-200	90	37	50	105	40 -0.012	28 -0.12	23	23	M27x2	45	45	45	M10
057-SRE03-M33-200	105	46	62.5	130	50 -0.012	35 -0.12	30	30	M33x2	58	55	80	M12
057-SRE03-M42-200	134	57	80	150	60 -0.015	44 -0.15	38	38	M42x2	68	68	160	M16
057-SRE03-M48-200	156	64	102.5	185	80 -0.015	55 -0.15	47	47	M48x2	92	90	310	M20
057-SRE03-M64-300	190	86	120	240	100 -0.020	70 -0.20	57	57	M64x3	116	110	530	M24

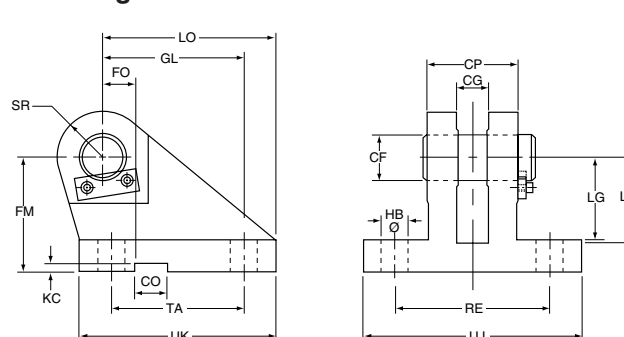
### Mounting Bracket and Pivot Pin Dimensions - For Model 94

Part No.	CF K7/h6 +0.1, +0.3	CG N9	CO N9	CP js11	FM js14	FO js14	GL js13	HB	KC 0, +0.30	LG	LJ	LO	RE js13	SR max	TA js13	UJ	UK
057-SCB01-012	12	10	10	30	40	16	46	9	3.3	28	29	56	55	12	40	75	60
057-SCB01-016	16	14	16	40	50	18	61	11	4.3	37	38	74	70	16	55	95	80
057-SCB01-020	20	16	16	50	55	20	64	14	4.3	39	40	80	85	20	58	120	90
057-SCB01-025	25	20	25	60	65	22	78	16	5.4	48	49	98	100	25	70	140	110
057-SCB01-030	30	22	25	70	85	24	97	18	5.4	62	63	120	115	30	90	160	135
057-SCB01-040	40	28	36	80	100	24	123	22	8.4	72	73	148	135	40	120	190	170
057-SCB01-050	50	35	36	100	125	35	155	30	8.4	90	92	190	170	50	145	240	215
057-SCB01-060	60	44	50	120	150	35	187	39	11.4	108	110	225	200	60	185	270	260
057-SCB01-080	80	55	50	160	190	35	255	45	11.4	140	142	295	240	80	260	320	340
057-SCB01-100	100	70	63	200	210	35	285	48	12.4	150	152	335	300	100	300	400	400

### Cap Mounting Bracket and Pivot Pin

Bore Ø	Mounting Bracket and Pivot Pin	Nominal Force kN	Weight kg
25	057-SCB01-012	8	0.6
32	057-SCB01-016	12.5	1.3
40	057-SCB01-020	20	2.1
50	057-SCB01-025	32	3.2
63	057-SCB01-030	50	6.5
80	057-SCB01-040	80	12.0
100	057-SCB01-050	125	23.0
125	057-SCB01-060	200	37.0
160	057-SCB01-080	320	79.0
200	057-SCB01-100	500	140.0

### Mounting Bracket and Pivot Pin



All dimensions are in millimeters unless otherwise stated.

### Mounting Styles

General guidance for the selection of ISO mounting styles can be found on the MHP mounting styles page. The notes which follow provide information for use in specific applications and should be read in conjunction with that information.

#### Trunnions

Trunnions require lubricated pillow blocks with minimum bearing clearances. Blocks should be aligned and mounted to eliminate bending moments on the trunnion pins. Self-aligning mounts must not be used to support the trunnions as bending forces can develop.

Intermediate trunnions may be positioned at any point on the cylinder body. This position, dimension X1, should be specified at the time of order. Trunnion position is not field adjustable.

#### Flange Mountings

Front flange-mounted (Model 67) cylinders incorporate a pilot diameter for accurate alignment on the mounting surface – see rod end dimensions for MHP cylinders. The bushing retainer is integral with the head on 25, 32 and 40mm bore cylinders,

while on 50mm bores and above, the circular retainer is bolted to the head.

#### Extended Tie Rods

Cylinders may be ordered with extended tie rods in addition to another mounting style. The extended tie rods may then be used for mounting other systems or machine components.

#### Pivot Mountings

Pivot pins are supplied with Model 84 cap fixed clevis mounted cylinders. Pivot pins are not supplied with the cap fixed eye mounting, Model 90, or the cap with spherical bearing, Model 94, where pin length will be determined by the customer's equipment.

#### Spherical Bearings

The service life of a spherical bearing is influenced by such factors as bearing pressure, load direction, sliding velocity and frequency of lubrication. When considering severe or unusual working conditions, please consult the factory.

### Foot Mountings and Thrust Keys

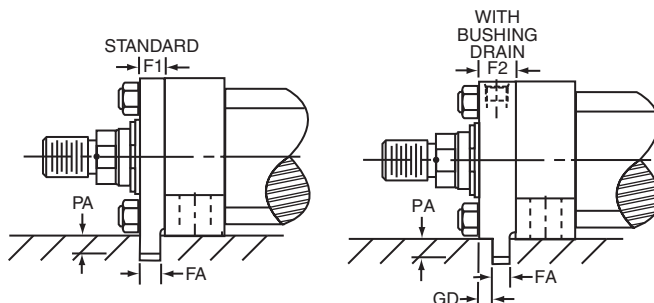
The bending moment which results from the application of force by a foot mounted cylinder must be resisted by secure mounting and effective guidance of the load. A thrust key modification is recommended to provide positive cylinder location.

Thrust key mountings eliminate the need for fitted bolts or external keys on Model 72 side mounted cylinders. The bushing retainer plate of 25mm & 32mm bore cylinders is extended below the nominal mounting surface to fit into a keyway milled into the mounting surface of the machine member.

Cylinders 40mm to 200mm bore utilize a keyway milled into the Model 72 head on the mounting lug side. A key (supplied) fits into the cylinder keyway and a corresponding keyway in the mounting surface of the machine member.

Bore Ø	Rod Ø	Nominal		FA -0.075	GD	PA -0.2
		F1 Standard	F2 w/Bushing Drain			
25	All	10	10 <sup>1</sup>	8	—	5
32	14	10	10 <sup>1</sup>	8	—	5
	22	10	16	8	6	5

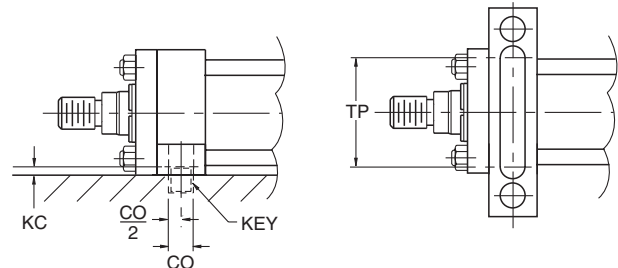
<sup>1</sup> Bushing drain is in the head. See optional features page for additional details about bushing drain ports.



**Profile of thrust key extension  
(with bushing drain in retainer)  
for bore and rod combination  
32mm x 22mm.**

#### Integral Key – 25mm & 32mm Bores

All dimensions are in millimeters unless otherwise stated.



#### Milled Keyway – 40mm to 200mm Bore

Bore Ø	CO N9	KC +0.5	TP <sup>2</sup> min
40	12	4	55
50	12	4.5	70
63	16	4.5	80
80	16	5	105
100	16	6	120
125	20	6	155
160	32	8	190
200	40	8	220

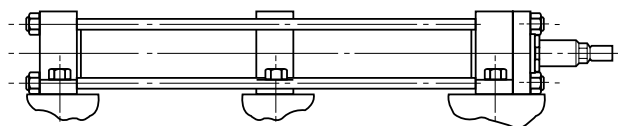
<sup>2</sup> Suggested Key Length

Bore Ø	Key			Part No.
	Width	Height	Length	
40	12	8	55	0941540040
50	12	8	70	0941540050
63	16	10	80	0941540063
80	16	10	105	0941540080
100	16	10	120	0941540100
125	20	12	155	0941540125
160	32 <sup>3</sup>	18	190	0941540160
200	40	22	220	0941540200

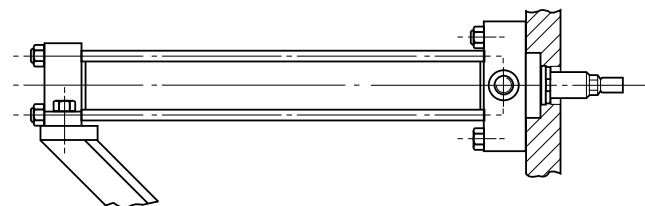
<sup>3</sup> Not to ISO6020/2.

### Intermediate or Additional Mountings

Long cylinders with fixed mountings such as extended tie rods may require additional support to counter sagging or the effects of vibration. This may be provided mid-way along the cylinder body in the form of an intermediate mounting or, with end-mounted cylinders, as an additional mounting supporting the free end of the cylinder. Please contact the factory for further information. The maximum unsupported stroke lengths which Miller Fluid Power recommends for each bore size are shown in the table below.



**Intermediate Foot Mounting**



**End Support Mounting**

### Maximum Stroke Lengths of Unsupported Cylinders (in mm)

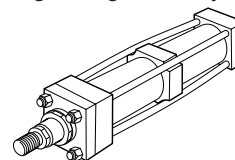
Bore Ø	Intermediate Mounting	End Support Mounting
25	1500	1000
32		
40		
50		
63	2000	1500
80		
100		
125	3000	2000
160		
200	3500	2500

All dimensions are in millimeters unless otherwise stated.

### Tie Rod Supports

To increase the resistance to buckling of long stroke cylinders, tie rod supports may be fitted.

These move the tie rods radially outwards and allow longer than normal strokes to be used without the need for an additional mounting.



Bore Ø	Stroke (meters)												No. of Supports Req'd.
	0.9	1.2	1.5	1.8	2.1	2.4	2.7	3.0	3.3	3.6	3.9	4.2	
25	1	1	2										
32	-	1	1	2									
40	-	-	1	1	1	2	2						
50	-	-	-	1	1	1	1	2	2	2	2	3	
63	-	-	-	-	-	1	1	1	1	1	2	2	
80	-	-	-	-	-	-	-	1	1	1	1	1	
100	-	-	-	-	-	-	-	-	-	1	1	1	

### Stroke Tolerances

Stroke length tolerances are required due to the build-up of tolerances of piston, head, cap and cylinder body. Standard production stroke tolerances are 0 to +2mm on all bore sizes and stroke lengths. For closer tolerances, please specify the required tolerance plus the operating temperature and pressure. Stroke tolerances of less than 0.4mm are generally impracticable due to the elasticity of cylinders. In these cases, the use of a stroke adjuster should be considered. Tolerances of stroke dependent dimensions for each mounting style are shown in the table below.

### Stroke Dependent Tolerances

Mounting Style	Dimensions	Tolerance - for strokes up to 3m
All styles - port dimensions	Y	±2
	PJ	±1.25
	ZB	max
67 (ME5)	ZB	max
68 (ME6)	ZJ	±1
84 (MP1)	XC	±1.25
90 (MP3)	XC	±1.25
94 (MP5)	XO	±1.25
72 (MS2)	XS	±2
	ZB	max
	SS	±1.25
81 (MT1)	XG	±2
82 (MT2)	ZB	max
	XJ	±1.25
89 (MT4)	ZB	max
	XV	±2
51 (MX1)	BB	±3
52 (MX2)		0
53 (MX3)		0
53 (MX3)	ZB	max
51 (MX1)	WH	±2
53 (MX3)		
51 (MX1)	ZJ	±1
52 (MX2)		
53 (MX3)		

**Calculation of Cylinder Diameter****General Formula**

The cylinder output forces are derived from the formula:

$$F = \frac{P \times A}{10000}$$

Where F = Force in kN.

P = Pressure at the cylinder in bar.

A = Effective area of cylinder piston in square mm.

Prior to selecting the cylinder bore size, properly size the piston rod for tension (pull) or compression (push) loading (see the Piston Rod Selection Chart).

If the piston rod is in compression, use the 'Push Force' table below, as follows:

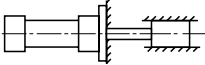
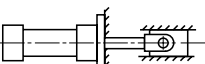
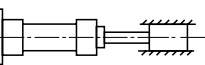
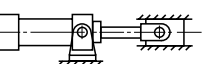
1. Identify the operating pressure closest to that required.
2. In the same column, identify the force required to move the load (always rounding up).
3. In the same row, look along to the cylinder bore required.

**Push Force**

Bore Ø	Bore Area	Cylinder Push Force in kN						
		10 bar	40 bar	63 bar	100 bar	125 bar	160 bar	210 bar
mm	sq. mm							
25	491	0.5	2.0	3.1	4.9	6.1	7.9	10.3
32	804	0.8	3.2	5.1	8.0	10.1	12.9	16.9
40	1257	1.3	5.0	7.9	12.6	15.7	20.1	26.4
50	1964	2.0	7.9	12.4	19.6	24.6	31.4	41.2
63	3118	3.1	12.5	19.6	31.2	39.0	49.9	65.5
80	5027	5.0	20.1	31.7	50.3	62.8	80.4	105.6
100	7855	7.9	31.4	49.5	78.6	98.2	125.7	165.0
125	12272	12.3	49.1	77.3	122.7	153.4	196.4	257.7
160	20106	20.1	80.4	126.7	201.1	251.3	321.7	422.2
200	31416	31.4	125.7	197.9	314.2	392.7	502.7	659.7

**Stroke Factors**

The stroke factors below are used in the calculation of cylinder 'basic length' – see Piston Rod Size Selection.

Rod End Connection	Mounting Style	Type of Mounting	Stroke Factor
Fixed and Rigidly Guided	53, 51, 72, 67		0.5
Pivoted and Rigidly Guided	53, 51, 72, 67		0.7
Fixed and Rigidly Guided	52, 68		1.0
Pivoted and Rigidly Guided	81		1.0

If the cylinder envelope dimensions are too large for the application, increase the operating pressure, if possible, and repeat the exercise.

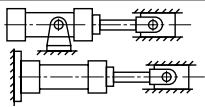
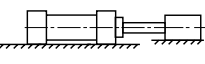
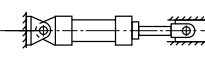
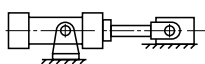
If the piston rod is in tension, use the 'Deduction for Pull Force' table. The procedure is the same but, due to the reduced area caused by the piston rod, the force available on the 'pull' stroke will be smaller. To determine the pull force:

1. Follow the procedure for 'push' applications as described above.
2. Using the 'pull' table, identify the force indicated according to the rod and pressure selected.
3. Deduct this from the original 'push' force. The resultant is the net force available to move the load.

If this force is not large enough, repeat the process and increase the system operating pressure or cylinder diameter if possible. For assistance, contact your local authorized Miller Fluid Power distributor.

**Deduction for Pull Force**

Piston Rod Ø	Piston Rod Area	Reduction in Force in kN					
		10 bar	40 bar	63 bar	100 bar	125 bar	160 bar
mm	sq. mm						
12	113	0.1	0.5	0.7	1.1	1.4	1.8
14	154	0.2	0.6	1.0	1.5	1.9	2.5
18	255	0.3	1.0	1.6	2.6	3.2	4.1
22	380	0.4	1.5	2.4	3.8	4.8	6.1
28	616	0.6	2.5	3.9	6.2	7.7	9.9
36	1018	1.0	4.1	6.4	10.2	12.7	16.3
45	1591	1.6	6.4	10.0	15.9	19.9	25.5
56	2463	2.5	9.9	15.6	24.6	30.8	39.4
70	3849	3.8	15.4	24.2	38.5	48.1	61.6
90	6363	6.4	25.5	40.1	63.6	79.6	101.8
110	9505	9.5	38.0	59.9	95.1	118.8	152.1
140	15396	15.4	61.6	97.0	154.0	192.5	246.3

Rod End Connection	Mounting Style	Type of Mounting	Stroke Factor
Pivoted and Rigidly Guided	52, 68, 89		1.5
Supported but not Rigidly Guided	53, 51, 72, 67		2.0
Pivoted and Rigidly Guided	90, 84, 82, 94		2.0
Pivoted and Supported but Rigidly Guided	89		3.0



**Piston Rod Size Selection**

To select a piston rod for thrust (push) applications, follow these steps:

1. Determine the type of cylinder mounting style and rod end connection to be used. Consult the Stroke Factor table and determine which factor corresponds to the application.

2. Using the appropriate stroke factor, determine the 'basic length' from the equation:

$$\text{Basic Length} = \text{Net Stroke} \times \text{Stroke Factor}$$

(The graph is prepared for standard rod extensions beyond the face of the bushing retainers. For rod extensions greater than standard, add the increases to the net stroke to arrive at the 'basic length'.)

3. Calculate the load imposed for the thrust application by multiplying the full bore area of the cylinder by the system pressure, or by referring to the Push and Pull Force charts.
4. Using the graph below, look along the values of 'basic length' and 'thrust' as found in 2 and 3 above, and note the point of intersection.

The correct piston rod size is read from the diagonally curved line labelled 'Rod Diameter' above the point of intersection.

**Stop Tubes**

The required length of stop tube, where necessary, is read from the vertical columns on the right of the graph below by following the horizontal band within which the point of intersection, determined in steps 2 and 3 opposite, lies.

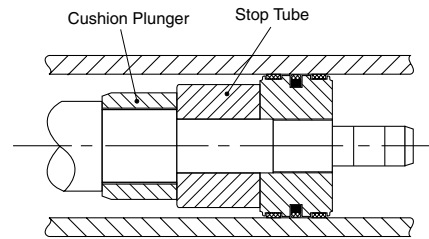
Note that stop tube requirements differ for fixed and pivot mounted cylinders.

If the required length of stop tube is in the region labeled 'consult factory', please submit the following information:

1. Cylinder mounting style.

2. Rod end connection and method of guiding load.
3. Bore required, stroke, length of rod extension (dimensions WF) if greater than standard.
4. Mounting position of cylinder. (Note: if at an angle or vertical, specify the direction of the piston rod.)
5. Operating pressure of cylinder, if limited to less than the standard pressure for the cylinder selected.

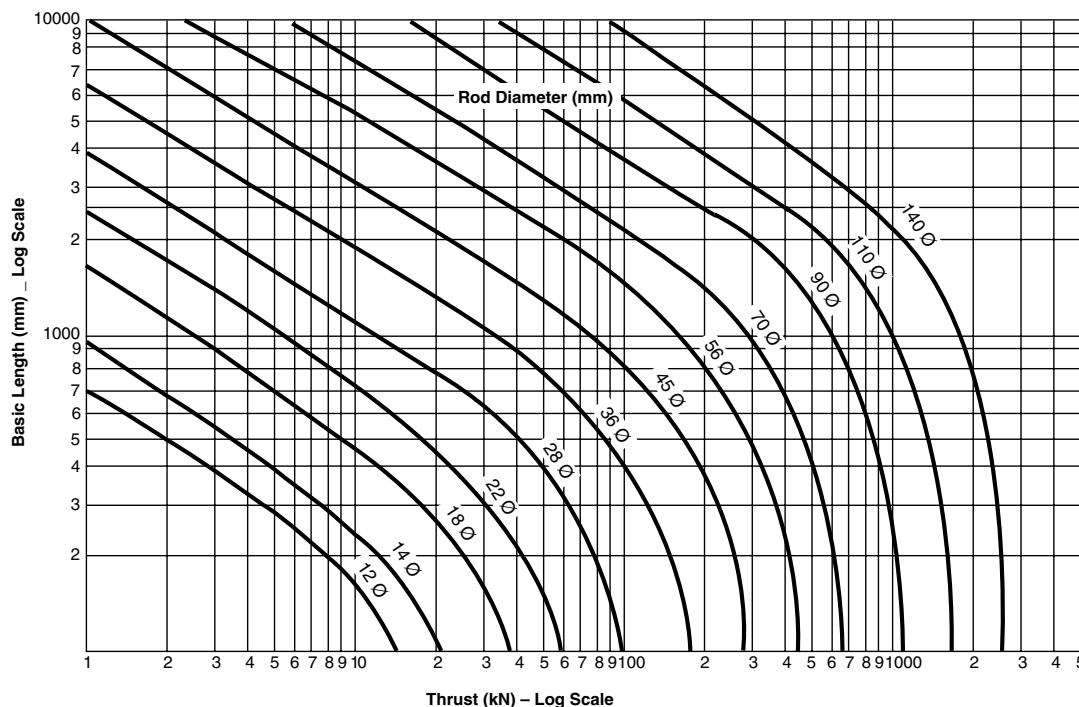
When specifying a cylinder with a stop tube, state the **gross** stroke of the cylinder and the length of the stop tube. The gross stroke is equal to the net (working) stroke of the cylinder plus the stop tube length.

**Long Stroke Cylinders**

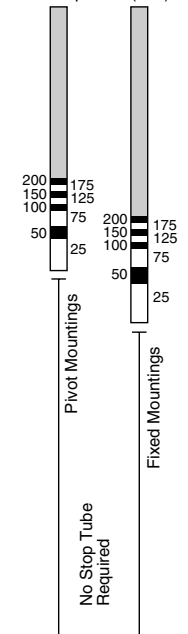
When considering the use of long stroke cylinders, the piston rod should be of sufficient diameter to provide the necessary column strength.

For tensile (pull) loads, the rod size is selected by specifying standard cylinders with standard rod diameters and using them at or below the rated pressure.

For long stroke cylinders under compressive loads, the use of stop tubes should be considered, to reduce bearing stress. The Piston Rod Selection Chart in this catalog provides guidance where unusually long strokes are required.

**Piston Rod Selection Chart**

Recommended Length of Stop Tube (mm)



Consult Factory

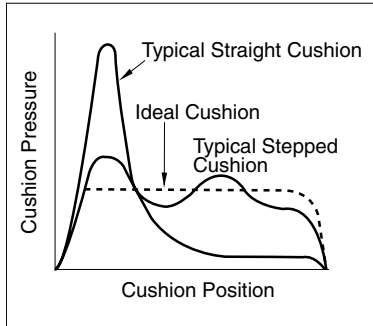
**An Introduction to Cushioning**

Cushioning is recommended as a means of controlling the deceleration of masses, or for applications where piston speeds are in excess of 0.1m/s and the piston will make a full stroke. Cushioning extends cylinder life and reduces undesirable noise and hydraulic shock.

Built-in 'cushions' are optional and can be supplied at the head and cap ends of the cylinder without affecting its envelope or mounting dimensions.

**Standard Cushioning**

Ideal cushion performance shows an almost uniform absorption of energy along the cushioning length, as shown. Many



forms of cushioning exist, and each has its own specific merits and advantages. In order to cover the majority of applications, MHP cylinders are supplied with profiled cushioning as standard. Final speed may be adjusted using the cushion screws.

The performance of profiled cushioning is indicated on the diagram, and cushion performance for each of the rod sizes available is illustrated graphically in the charts on the next page.

**Note:** Cushion performance will be affected by the use of water or high water based fluids. Please consult the factory for details.

**Cushion Length**

Where specified, MHP cylinders incorporate the longest cushion plungers that can be accommodated within the standard envelope without reducing the rod bearing and piston bearing lengths. See Cushion Length Table for specific dimensions. Cushions are adjustable via recessed needle valves.

**Cushion Calculations**

The charts on the next page show the energy absorption capacity for each bore/rod combination at the head (annulus) and the cap (full bore) ends of the cylinder. The charts are valid for piston velocities in the range 0.1 to 0.3m/s. For velocities between 0.3 and 0.5m/s, the energy values derived from the charts should be reduced by 25%. For velocities of less than 0.1m/s where large masses are involved, and for velocities of greater than 0.5m/s, a special cushion profile may be required. Please consult the factory for details.

The cushion capacity of the head end is less than that of the cap, and reduces to zero at high drive pressures due to the pressure intensification effect across the piston.

The energy absorption capacity of the cushion decreases with drive pressure.

**Formula**

Cushioning calculations are based on the formula  $E = \frac{1}{2}mv^2$  for horizontal applications. For inclined or vertically downward or upward applications, this is modified to:

$$E = \frac{1}{2}mv^2 + mgl \times 10^{-3} \times \sin \alpha$$

(for inclined or vertically downward direction of mass)

$$E = \frac{1}{2}mv^2 - mgl \times 10^{-3} \times \sin \alpha$$

(for inclined or vertically upward direction of mass)

Where:

E = energy absorbed in Joules

g = acceleration due to gravity = 9.81m/s<sup>2</sup>

v = velocity in meters/second

l = length of cushion in millimeters

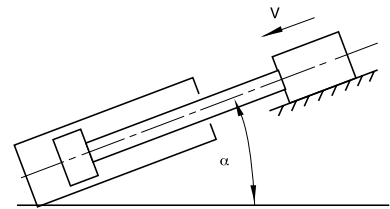
m = mass of load in kilograms (including piston, rod and rod end accessories)

$\alpha$  = angle to the horizontal in degrees

p = pressure in bar

**Example**

The following example shows how to calculate the energy developed by masses moving in a straight line. For non-linear motion, other calculations are required; please consult the factory. The example assumes that the bore and rod diameters are already appropriate for the application. The effects of friction on the cylinder and load have been ignored.



Selected bore/rod 160/70mm (No.1 rod).  
Cushioning at the cap end.

Pressure =	160 bar
Mass =	10000kg
Velocity =	0.4m/s
Cushion length =	41mm
$\alpha$ =	45°
$\sin \alpha$ =	0.70

$$E = \frac{1}{2}mv^2 + mgl \times 10^{-3} \times \sin \alpha$$

$$= \frac{10000 \times 0.4^2}{2} + 10000 \times 9.81 \times \frac{41}{10^3} \times 0.70$$

$$= 800 + 2815 = 3615 \text{ Joules}$$

Note that velocity is greater than 0.3m/s; therefore, a de-rating factor of 0.75 must be applied before comparison with the curves on the cushioning charts. Applying this factor to the calculated energy figure of 3615 Joules gives a corrected energy figure of:

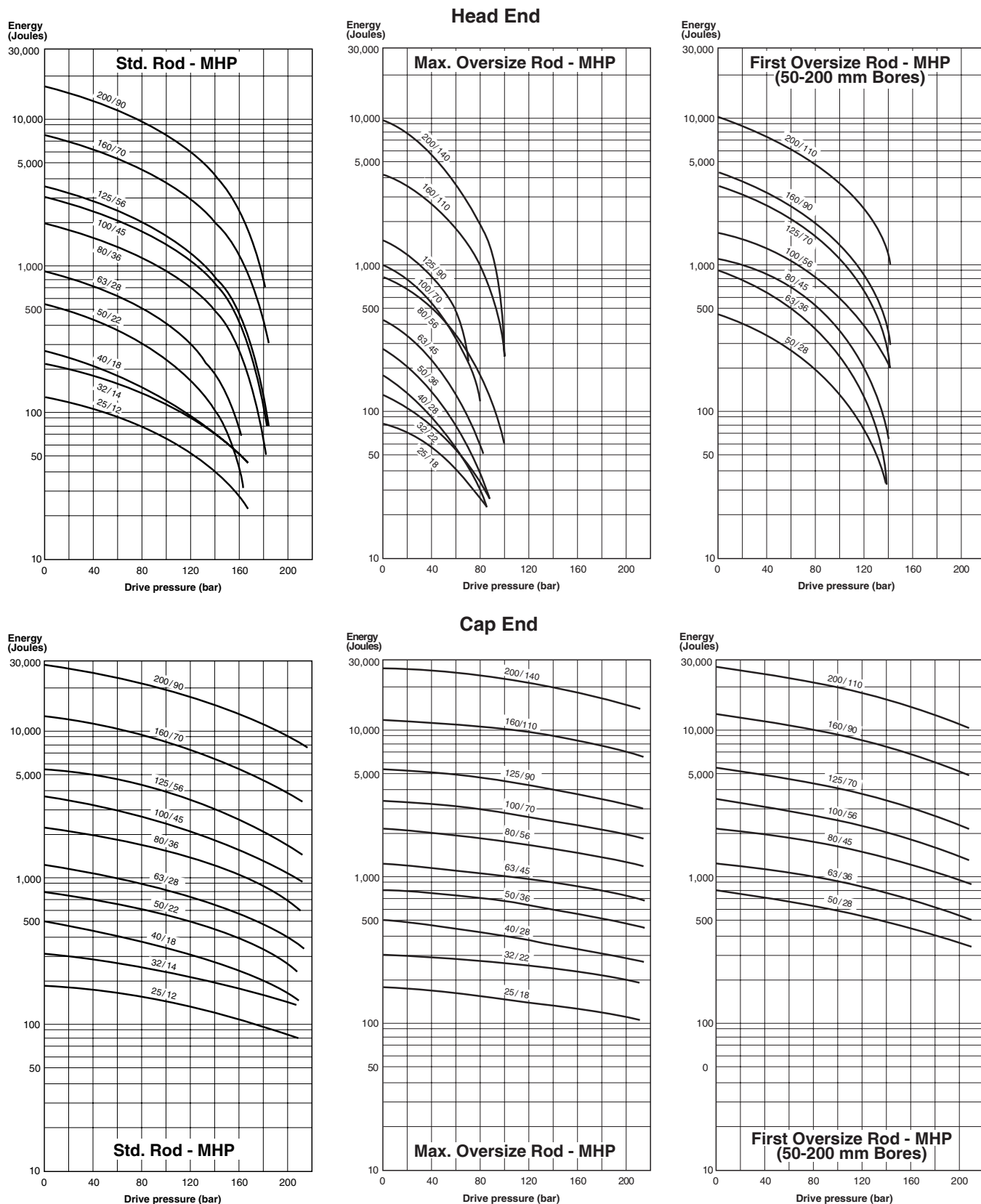
$$\frac{3615}{0.75} = 4820 \text{ Joules}$$

Comparison with the curve shows that the standard cushion can safely decelerate this load. If the calculated energy exceeds that indicated by the curve, select a larger bore cylinder and re-calculate.

### Cushion Energy Absorption Capacity Data

The cushion energy absorption capacity data shown below is based on the maximum fatigue-free pressure developed in the tube. For applications with a life cycle of less than

10<sup>6</sup> cycles, greater energy absorption figures can be applied. Please consult the factory if further information is required.



**Cushion Length, Piston and Rod Mass**

Bore Ø	Rod Ø	Cushion Length						Mass	
		Standard Rod		Max. Oversize Rod		First Oversize Rod		Piston & Rod Zero Stroke kg	Rod Only per 10mm Stroke kg
		Head	Cap	Head	Cap	Head	Cap		
25	12	22	20	24	20	-	-	0.12	0.01
	18							0.16	0.02
32	14	24	20	24	20	-	-	0.23	0.01
	22							0.30	0.03
40	18	29	29	29	30	-	-	0.44	0.02
	28							0.60	0.05
50	22	29	29	29	29	29	29	0.70	0.03
	36							0.80	0.05
	28							0.95	0.08
63	28	29	29	29	29	29	29	1.20	0.05
	45							1.35	0.08
	36							1.60	0.12
80	36	35	32	27	32	35	32	2.30	0.08
	56							2.50	0.12
	45							2.90	0.19
100	45	35	32	26	32	29	32	4.00	0.12
	70							4.40	0.19
	56							5.10	0.30
125	56	28	32	27	32	27	32	7.10	0.19
	90							8.00	0.30
	70							9.40	0.50
160	70	34	41	34	41	34	41	13.70	0.30
	110							15.30	0.50
	90							17.20	0.75
200	90	46	56	49	56	50	56	27.00	0.50
	140							30.00	0.75
	110							34.00	1.23

**Pressure Limitations – Introduction**

The pressure limitations of a hydraulic cylinder must be reviewed when considering its application. To assist the designer in obtaining the optimum performance from a cylinder, the information which follows highlights the recommended minimum and maximum pressures according to application. If in doubt, please consult the factory.

**Minimum Pressure**

Due to factors such as seal friction, the minimum operating pressure for MHP cylinders is 5 bar. Below this pressure, low friction seals should be specified. If in doubt, please consult the factory.

**Maximum Pressure**

MHP cylinders are designed to the mounting dimensions specified in ISO 6020/2 for 160 bar cylinders but, due to the selection of materials, they can be used at higher pressures depending on the application and the choice of rod size and rod end style. As a result, the majority of these cylinders can be operated at 210 bar.

All dimensions are in millimeters unless otherwise stated.

**Cylinder Tube (Pressure Envelope)**

In many applications, the pressure developed within a cylinder may be greater than the working pressure, due to pressure intensification across the piston and during cushioning. In most cases, this intensification does not affect the cylinder mountings or piston rod threads in the form of increased loading. It may, however, affect the cylinder tube and induce fatigue failure or cause premature seal wear. It is important, therefore, that the pressure due to cushioning or intensification does not exceed the 340 bar fatigue limit of the cylinder tube. The cushion energy absorption data on the previous page is based on this maximum induced pressure. If in doubt, please consult the factory.

**Seals and Fluid Data**

Seal Type	Seal Materials – a combination of:	Fluid Medium to ISO 6743/4-1982	Temperature Range
Standard	Nitrile (NBR), PTFE, enhanced polyurethane (AU)	Mineral oil HH, HL, HLP, HLP-D, HM, HV, MIL-H-5606 oil, air, nitrogen	-20°C to +80°C
Fluoro-carbon	Fluorocarbon elastomer (FPM) Fluorocarbon, PTFE	Fire resistant fluids based on phosphate esters (HFD-R) Also suitable for hydraulic oil at high temperatures/ environments. <b>Not suitable for use with Skydrol.</b> See fluid manufacturer's recommendations.	-20°C to +150°C

**Operating Medium**

Sealing materials used in the standard cylinder are suitable for use with most petroleum-based hydraulic fluids.

Special seals are available for use with water-glycol or water-in-oil emulsions, and with fluids such as fire-resistant synthetic phosphate ester and phosphate ester-based fluids.

If there is any doubt regarding seal compatibility with the operating medium, please consult the factory.

The table above is a guide to the sealing compounds and operating parameters of the materials used for standard and optional rod bushing, piston and tube seals.

**Temperature**

Standard seals can be operated at temperatures between -20°C and +80°C. Where operating conditions result in temperatures which exceed these limits, special seal compounds may be required to ensure satisfactory service life – please consult the factory.

**Special Seals**

Standard seals are fitted (as listed above) to MHP cylinders. For other duties, the optional fluorocarbon seals are available. Special seals, in addition to those shown in the table above, can also be supplied. Please insert a '9' (Modified) in the order code and specify fluid medium when ordering.

**Water Service**

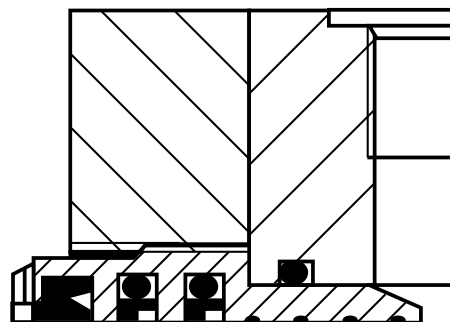
Special cylinders are available for use with water as the fluid medium. Modifications include a stainless steel piston rod with lipseal piston, and plating of internal surfaces. When ordering, please specify the maximum operating pressure or load/speed conditions.

**Warranty**

Miller Fluid Power warrants cylinders modified for use with water or water base fluids to be free of defects in materials and workmanship, but cannot accept responsibility for premature failure caused by corrosion, electrolysis or mineral deposits in the cylinder.

**Low Friction Seals**

For applications where very low friction and an absence of stick-slip are important, the option of low friction seals is available. Please consult the factory.

**Metallic Rod Wipers**

Metallic rod wipers replace the standard wiper seal, and are recommended where dust or splashing might damage the wiper seal material. Metallic rod wipers do not affect cylinder dimensions.

**Proximity Sensors**

EPS proximity switches can be fitted to give reliable end of stroke signals.

**Position Feedback**

Linear position transducers of various types are available for MHP Series cylinders. Please contact the factory for further details.

**Rod End Bellows**

Unprotected piston rod surfaces which are exposed to contaminants with air hardening properties can be protected by rod end bellows. Longer rod extensions are required to accommodate the collapsed length of the bellows. Please consult the factory for further information.



**Standard Ports**

MHP Series cylinders are supplied with BSPP parallel threaded ports, of a size suitable for normal speed applications – see table opposite. MHP cylinders are also available with a variety of optional ports.

**Oversize Ports**

For higher speed applications, MHP Series cylinders are available with oversize BSPP or metric ports to the sizes shown in the table opposite, or with extra ports in head or cap faces that are not used for mountings or cushion screws. On 25mm and 32mm bore cylinders, 20mm high port bosses are necessary to provide the full thread length at the cap end – see rod end dimensions for increased height at the head end. Note that Y and PJ dimensions may vary slightly to accommodate oversize ports – please contact the factory where these dimensions are critical.

**Port Size and Piston Speed**

One of the factors which influences the speed of a hydraulic cylinder is fluid flow in the connecting lines. Due to piston rod displacement, the flow at the cap end port will be greater than that at the head end, at the same piston speed. Fluid velocity in connecting lines should be limited to 5m/s to minimize fluid turbulence, pressure loss and hydraulic shock. The tables opposite are a guide for use when determining whether cylinder ports are adequate for the application. Data shown gives piston speeds for standard and oversize ports and connecting lines where the velocity of the fluid is 5m/s.

If the desired piston speed results in a fluid flow in excess of 5m/s in connecting lines, larger lines with two ports per cap should be considered. Miller Fluid Power recommends that a flow rate of 5m/s in connecting lines should not be exceeded.

**Speed Limitations**

Where large masses are involved, or piston speeds exceed 0.1m/s and the piston will make a full stroke, cushions are recommended – see cushion information. For cylinders with oversize ports and with a flow exceeding 8m/s into the cap end, a 'non-floating cushion' should be specified. Please consult the factory.

**Ports, Air Bleeds and  
Cushion Adjustment Location**

The table below shows standard positions for ports, and cushion adjusting screws where fitted. Air bleeds (see optional features) may be fitted in unoccupied faces of the head or cap, depending on mounting.

Positions of Ports and Cushion Screws in Head and Cap		Mounting Styles																																	
		53, 52 and 51				67				68				72 <sup>s</sup>				90 and 84				94				81				82				89	
Head	Port	1	2	3	4	1	2	3	4	1	2	3	4	1	2	4	1	2	3	4	1	2	3	4	1	3	1	2	3	4	1	2	3	4	
	Cushion	2	3	4	1	3	3	1	1	3	4	1	2	2	4	2	2	3	4	1	2	3	4	1	3	1	3	4	1	2	3	4	1	2	
Cap	Port	1	2	3	4	1	2	3	4	1	2	3	4	1	2	4	1	2	3	4	1	2	3	4	1	2	3	4	1	3	1	2	3	4	
	Cushion	2	3	4	1	3	4	1	2	3	3	1	1	2	4	2	2	3	4	1	2	3	4	1	3	4	1	2	3	1	3	4	1	2	

<sup>5</sup> Ports at position 2 or 4 in 25mm to 100mm bores are offset toward position 1.  
All dimensions are in millimeters unless otherwise stated.

Bore Ø	Standard Cylinder Ports				
	Port Size BSP/G inches	Port Size Metric <sup>1</sup>	Bore of Connecting Lines	Cap End Flow in l/min @ 5m/s	Piston Speed m/s
25	1/4	M14x1.5	7	11.5	0.39
32	1/4	M14x1.5	7	11.5	0.24
40	3/8	M18x1.5	10	23.5	0.31
50	1/2	M22x1.5	13	40	0.34
63	1/2	M22x1.5	13	40	0.21
80	3/4	M27x2	15	53	0.18
100	3/4	M27x2	15	53	0.11
125	1	M33x2	19	85	0.12
160	1	M33x2	19	85	0.07
200	1-1/4	M42x2	24	136	0.07

Bore Ø	Oversize Cylinder Ports				
	Port Size BSP/G inches	Port Size Metric <sup>1</sup>	Bore of Connecting Lines	Cap End Flow in l/min @ 5m/s	Piston Speed m/s
25	3/8 <sup>2</sup>	M18x1.5 <sup>2,3</sup>	10	23.5	0.80
32	3/8 <sup>2</sup>	M18x1.5 <sup>2,3</sup>	10	23.5	0.48
40	1/2	M22x1.5 <sup>3</sup>	13	40	0.53
50	3/4	M27x2 <sup>3</sup>	15	53	0.45
63	3/4	M27x2 <sup>3</sup>	15	53	0.28
80 <sup>4</sup>	1	M33x2	19	85	0.28
100 <sup>4</sup>	1	M33x2	19	85	0.18
125 <sup>4</sup>	1-1/4	M42x2	24	136	0.18
160 <sup>4</sup>	1-1/4	M42x2	24	136	0.11
200 <sup>4</sup>	1-1/2	M48x2	30	212	0.11

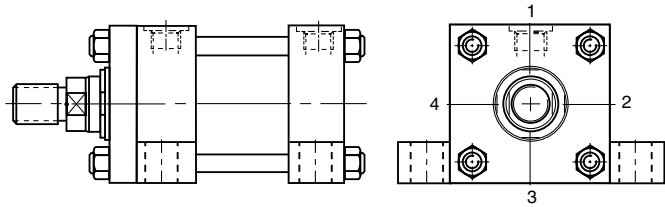
<sup>1</sup> Not to DIN 24 554

<sup>2</sup> 20mm high port bosses fitted at cap end

<sup>3</sup> ISO 6149 ports are not available on some bore/rod combinations.

<sup>4</sup> Consult factory – not normally available on these bore sizes

Not recommended for 67 mountings at pressures above 100 bar



Ports at position 2 or 4 in 25mm to 100mm bore sizes of Model 72 are offset toward position 1 and are not available in the head of 25mm and 32mm bores with number 2 rods. 25mm and 32mm bore heads will not be elongated 5mm toward position 2 or 4 when a port is specified at either of those two locations (the 5mm elongation at position 1 will remain). Contact the factory for the offset dimension.



**Cylinder Port Options**

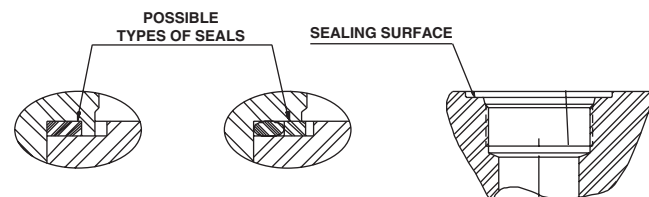
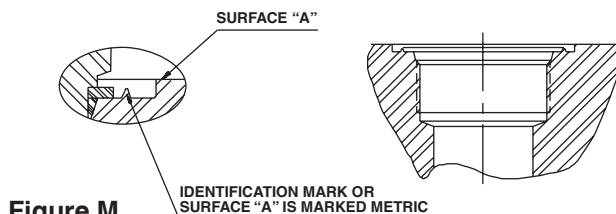
- Option "S" SAE Straight Thread O-Ring Port.  
Recommended for most hydraulic applications.
- Option "N" Conventional NPTF Ports (Dry-Seal Pipe Threads). Recommended for pneumatic applications only.
- Option "R" BSPP Port (British Parallel Thread). ISO 228 port commonly used in Europe. See Figure R-G below.
- Option "F" SAE Flange Ports Code 61 (3000 psi). Recommended for hydraulic applications requiring larger port sizes.

- Option "J" BSPT (British Tapered Thread).
- Option "G" Metric Straight Thread Port similar to Option "R" with metric thread. Popular in some European applications. See Figure R-G below.
- Option "M" ISO-6149-1 Metric Straight Thread Port. Recommended for all hydraulic applications designed per ISO standards. See Figure M below.

Bore Ø	"S" SAE	"N" NPTF Pipe Thread	"R" BSPP Parallel Thread (Standard)	"F" SAE 4-Bolt Flange Nom. Size	"J" BSPT Taper Thread	"G" Metric Straight Thread	"M" ISO-6149-1 Metric Straight Thread
25	#6	1/4	1/4	N/A	1/4	M14 x 1.5	M14 x 1.5
32	#6	1/4	1/4	N/A	1/4	M14 x 1.5	M14 x 1.5
40	#6	3/8	3/8	N/A	3/8	M18 x 1.5	M18 x 1.5
50	#10	1/2	1/2	N/A	1/2	M22 x 1.5	M22 x 1.5
63	#10	1/2	1/2	1/2 <sup>1,2</sup>	1/2	M22 x 1.5	M22 x 1.5
80	#12	3/4	3/4	3/4 <sup>1</sup>	3/4	M27 x 2	M27 x 2
100	#12	3/4	3/4	3/4	3/4	M27 x 2	M27 x 2
125	#16	1	1	1	1	M33 x 2	M33 x 2
160	#16	1	1	1	1	M33 x 2	M33 x 2
200	#20	1-1/4	1-1/4	1-1/4	1-1/4	M42 x 2	M42 x 2

<sup>1</sup> Due to flange mounting-bolt interference, this port can only be supplied on the cap end of Models 51 & 52 when tie rod nuts are not recessed.

<sup>2</sup> SAE 4-Bolt Flange Port is not available on the head end in 63mm bore with Rod No. 2 (45mm).

**BSPP Port for MHP Series****Figure R-G****ISO 6149-1 Port for MHP Series****Figure M****Weights – MHP Series Cylinders**

Bore Ø	Rod Ø	Mounting Styles – Weight at Zero Stroke						Weight per 10mm Stroke  kg
		51, 52, 53	72	67, 68	84, 90, 94	81, 82	89	
		kg	kg	kg	kg	kg	kg	
25	12	1.2	1.4	1.5	1.4	1.3	1.5	0.05
	18						1.6	0.06
32	14	1.6	1.9	2.0	1.9	1.7	2.0	0.06
	22	1.7						0.08
40	18	3.7	4.0	4.7	4.2	3.9	4.6	0.09
	28	3.8	4.1	4.8	4.3	4.0	4.7	0.12
50	22	5.9	6.5	7.2	7.0	6.3	7.9	0.14
	28	6.0	6.6	7.3	7.1		8.0	0.16
	36				7.2	6.4		0.18
63	28	8.5	9.7	10.1	10.1	8.9	10.6	0.19
	36	8.6	9.8	10.2	10.2	9.0	10.7	0.22
	45	8.7	9.9	10.3	10.4	9.1	10.9	0.27
80	36	16.0	17.3	18.9	19.5	16.5	20.5	0.27
	45	16.1	17.4	19.0	19.6	16.6		0.32
	56	16.3	17.7	19.2	19.8	16.8	20.7	0.39

Bore Ø	Rod Ø	Mounting Styles – Weight at Zero Stroke						Weight per 10mm Stroke kg
		51, 52, 53	72	67, 68	84, 90, 94	81, 82	89	
		kg	kg	kg	kg	kg	kg	
100	45			25.0			26.0	0.40
	56	22.0	24.0	26.0	28.0	22.7	27.0	0.47
	70	23.0	25.0		29.0	23.2		0.58
125	56	42.0	44.0	48.0	53.0	43.0	48.0	0.65
	70		45.0	48.0	54.0		49.0	0.76
	90	43.0			49.0		44.0	50.0
160	70	69.0	73.0	78.0	90.0	71.0	84.0	1.00
	90				91.0			1.20
	110	70.0	74.0	79.0	92.0	72.0	85.0	1.40
200	90	122.0	129.0	138.0	157.0	127.0	153.0	1.50
	110	123.0	130.0		158.0	128.0		1.80
		140	124.0	131.0	140.0	160.0	129.0	155.0

All dimensions are in millimeters unless otherwise stated.

**Bushing Drains**

The tendency of hydraulic fluid to adhere to the piston rod can result in an accumulation of fluid in the cavity behind the bushing wiperseal under certain operating conditions. This may occur with long stroke cylinders; where there is a constant back pressure as in differential circuitry, or where the ratio of the extend speed to the retract speed is greater than 2 to 1.

A bushing drain port is provided in the retainer, except in Model 67, Model 81 in 100mm to 200mm bores, and regardless of mounting style, 25mm bore with all rod numbers, and 32mm to 40mm bores with number 1 rod. In these cases the drain port is located in the head. When the gland drain port in 25mm to 40mm bores is in the head of all models except model 67, it must be in the same position as the port (on the 5mm elongated side for 25mm & 32mm bores) and when specified in 25mm and 32mm bores of Model 72 it must be in position 1. On Model 67 in 25mm and 32mm bores the drain port can be in position 2 or 4 and is not available in position 3. When the bushing drain port is provided in the retainer, the thickness of the retainer is increased by 6mm in 32mm and 40mm bores with number 2 rod and by 4mm in 63mm bore cylinders with number 2 rod. Note that, on Model 67 cylinders, drain ports cannot normally be positioned in the same face as ports or cushion valves – please consult the factory.

**Bushing Drain Port Location & Position Availability**

Bore Ø	Rod Ø	Head (H) or Retainer (R) Location / Position			
		51, 52, 53, 68, 81, 82, 84, 90, 94	72	81	67
25	All	H / 1, 2, 3, 4	H / 1	H / 1, 3	H / 2, 4
32	14	H / 1, 2, 3, 4	H / 1	H / 1, 3	H / 2, 4
	22	R / 1, 2, 3, 4	R / 1, 2, 3 <sup>1</sup> , 4	R / 1, 2, 3, 4	H / 2, 4
40	18	H / 1, 2, 3, 4	H / 1	H / 1, 3	H / 2, 3, 4
	28	R / 1, 2, 3, 4	R / 1, 2, 3, 4	R / 1, 2, 3, 4	H / 2, 3, 4
50	All	R / 1, 2, 3, 4	R / 1, 2, 3, 4	R / 1, 2, 3, 4	H / 2, 3, 4
63	All	R / 1, 2, 3, 4	R / 1, 2, 3, 4	R / 1, 2, 3, 4	H / 2, 3, 4
80	All	R / 1, 2, 3, 4	R / 1, 2, 3, 4	R / 1, 2, 3, 4	H / 2, 3, 4
100	All	R / 1, 2, 3, 4	R / 1, 2, 3, 4	H / 1, 3	H / 2, 3, 4
125	All	R / 1, 2, 3, 4	R / 1, 2, 3, 4	H / 1, 3	H / 2, 3, 4
160	All	R / 1, 2, 3, 4	R / 1, 2, 3, 4	H / 1, 3	H / 2, 3, 4
200	All	R / 1, 2, 3, 4	R / 1, 2, 3, 4	H / 1, 3	H / 2, 3, 4

<sup>1</sup> Bushing drain is not available in position 3 when key plate is specified.

Bushing drain ports will be the same type as the ports specified on the cylinder assembly except for non Model 67 mounts on bore sizes 25, 32, 40 and 50 mm. In these cases they will be 1/8 NPTF.

The size of the bushing drain ports are as shown on the adjacent table.

Bushing drains should be piped back to the fluid reservoir, which should be located below the level of the cylinder.

Port Type	Port Size
R (BSPP)	1/8 BSPP
S (SAE)	#4 (SAE)
N (Pipe Thread)	1/8 NPTF
G (Metric Straight)	M10 x 1
M (ISO 6149-1)	M10 x 1
J (BSPT)	1/8 BSPT
F (SAE 4 Bolt Flange)	1/8 BSPP

**Air Bleeds**

The option of bleed screws is available at either or both ends of the cylinder, at any position except in the port face. The selected positions should be shown in the order code. Cylinders with bore sizes up to 40mm are fitted with M5 bleed screws; for bore sizes of 50mm and above, M8 bleed screws are fitted. Note that, for cylinders of 50mm bore and above, where it is essential to have the air bleed in the port face, bosses can be welded to the cylinder tube. Please contact the factory for details.

**Spring-Returned, Single-Acting Cylinders**

MHP Series single-acting cylinders can be supplied with an internal spring to return the piston after the pressure stroke. Please supply details of load conditions and friction factors, and advise whether the spring is required to advance or return the piston rod.

On spring-returned cylinders, tie rod extensions will be supplied to allow the spring to be 'backed off' until compression is relieved. Tie rod nuts will be welded to the tie rods at the opposite end of the cylinder, to further assure safe disassembly. Please contact the factory when ordering spring-returned cylinders.

**Duplex and Tandem Cylinders**

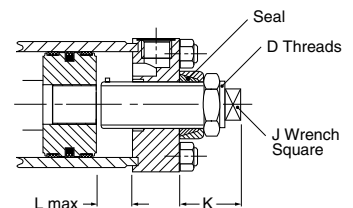
A tandem cylinder is made up of two cylinders mounted in line with pistons connected by a common piston rod and rod seals installed between the cylinders to permit double acting operation of each. Tandem cylinders allow increased output force when mounting width or height are restricted.

A duplex cylinder is made up of two cylinders mounted in line with pistons not connected with rod seals installed between the cylinders to permit double acting operation of each. Cylinders may be mounted with piston rod to piston or back to back and are generally used to provide three position operation.

**Stroke Adjusters**

Where absolute precision in stroke length is required, a screwed adjustable stop can be supplied. Several types are available – the illustration shows a design suitable for infrequent<sup>1</sup> adjustment at the uncushioned cap end of a cylinder. Please contact the factory, specifying details of the application and the adjustment required.

Bore Ø	D	J	K min	L max
40	M12x1.25	7	75	130
50	M20x1.5	12	75	200
63	M27x2	16	75	230
80	M33x2	20	85	230
100	M42x2	26	70	450
125	M48x2	30	70	500
160	M64x3	40	75	500
200	M80x3	50	80	500



All dimensions are in millimeters unless otherwise stated.

<sup>1</sup> Infrequent is defined by positioning the retract stroke in a couple of attempts at original machine set-up. The frequent stroke adjuster is recommended for adjustments required after original equipment has been adjusted by the original equipment manufacturer.

**Notes**

**Service Assemblies and Seal Kits**

Service Assembly Kits and Seal Kits for MHP cylinders simplify the ordering and maintenance processes. They contain sub-assemblies which are ready for installation, and are supplied with full instructions. When ordering Service Assemblies and Seal Kits, please refer to the identification plate on the cylinder body, and supply the following information:

**Serial Number - Bore - Stroke - Model Number - Fluid Type**

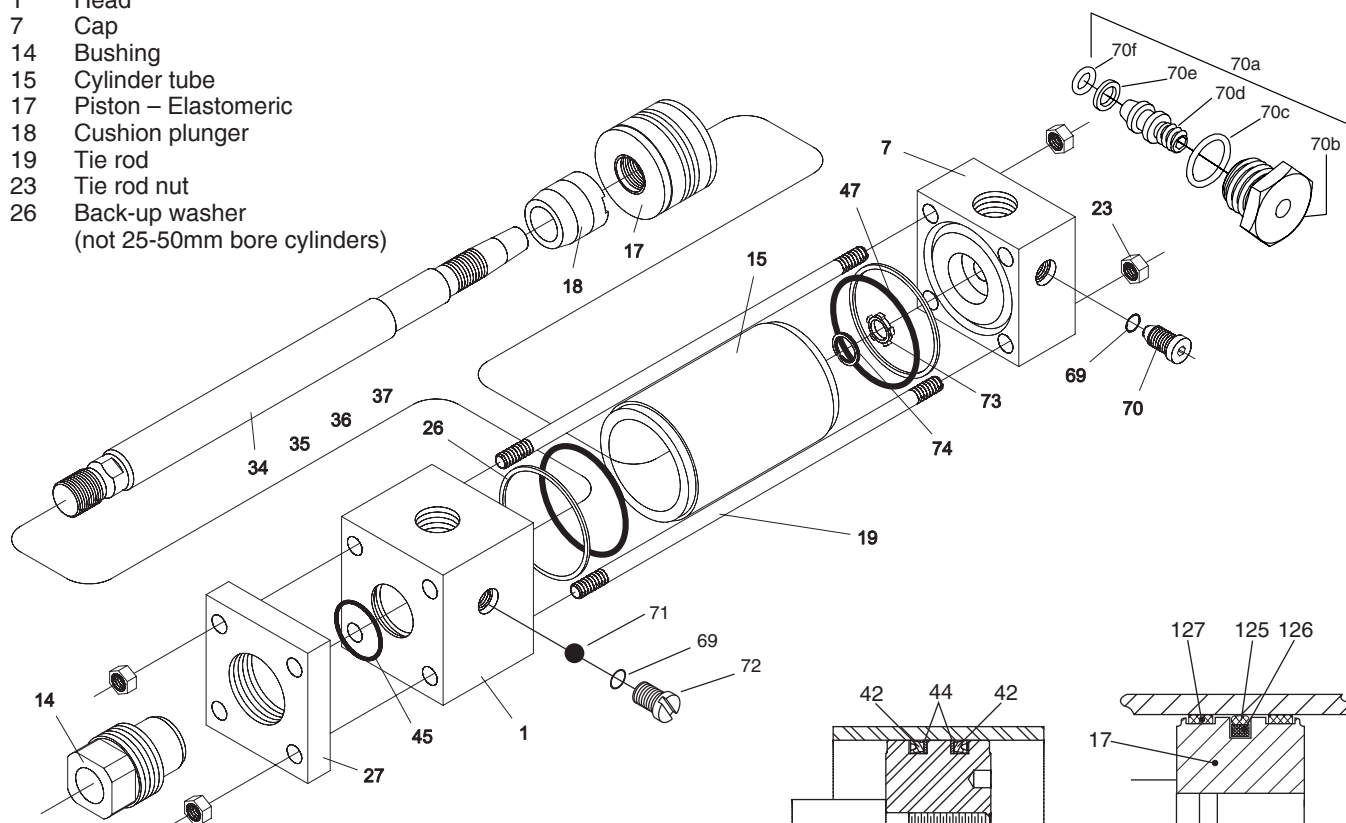
**Key to Part Numbers**

- 1 Head
- 7 Cap
- 14 Bushing
- 15 Cylinder tube
- 17 Piston – Elastomeric
- 18 Cushion plunger
- 19 Tie rod
- 23 Tie rod nut
- 26 Back-up washer (not 25-50mm bore cylinders)

- 70f O-ring – needle screw
- 71 Ball – cushion check valve
- 72 Cushion check valve screw
- 73 Floating cushion bushing
- 74 Retaining ring for cushion bushing
- 125 Standard piston seal
- 126 Energizing ring for standard seal 125
- 127 Wear ring for standard piston

<sup>1</sup> Not illustrated

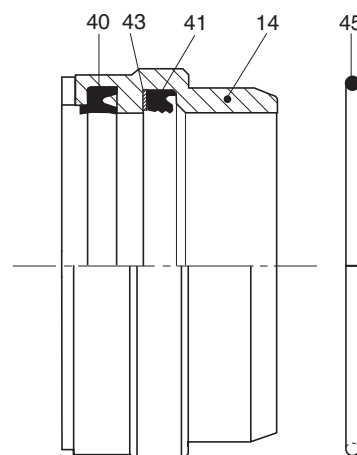
<sup>2</sup> In some cases, the adjusting screw is installed in a cartridge



- 27 Retainer
- 34 Piston rod – single rod, no cushion
- 35 Piston rod – single rod, cushion at head end
- 36 Piston rod – single rod, cushion at cap end
- 37 Piston rod – single rod, cushion at both ends
- 40 Wiperseal – for 14
- 41 Lipseal – for 14
- 43 Back-up washer, gland lipseal 41 (not Group 1 seals)
- 45 O-ring – gland/head
- 47 O-ring – cylinder body
- 57<sup>1</sup> Piston rod – double rod, no cushion
- 58<sup>1</sup> Piston rod – double rod, cushion one end
- 60<sup>1</sup> Piston rod – double rod, no cushion
- 61<sup>1</sup> Piston rod – double rod, cushion one end
- 69 O-ring – needle valve and check valve screws
- 70<sup>2</sup> Needle valve, cushion adjustment
- 70a<sup>2</sup> Needle valve, cushion adjustment – cartridge type
- 70b Cartridge screw
- 70c O-ring – cartridge screw
- 70d Needle screw
- 70e Back-up washer – needle screw

**Piston 25mm, 32mm and 40mm bore**

**Piston 50mm and larger**



**Bushing and Seals**

## Contents and Part Numbers of Seal Kits for Pistons and Bushings

(see key to part numbers previous page)

**Bushing Kit – Bushing and Seals** Contain items 14, 40, 41, 43, 45. Where the original bushing incorporates a bushing drain, please consult the factory.

**Rod Seal Kit – Bushing Seals** Contain items 40, 41, 43, 45

## Miller Series Repair Kit Part Numbers

Rod Ø	Bushing Assembly		Rod Seal Kit	
	Standard	Fluorocarbon	Standard	Fluorocarbon
12	MHP-KR100-12	MHP-KR200-12	MHP-KR300-12	MHP-KR400-12
14	MHP-KR100-14	MHP-KR200-14	MHP-KR300-14	MHP-KR400-14
18	MHP-KR100-18	MHP-KR200-18	MHP-KR300-18	MHP-KR400-18
22	MHP-KR100-22	MHP-KR200-22	MHP-KR300-22	MHP-KR400-22
28	MHP-KR100-28	MHP-KR200-28	MHP-KR300-28	MHP-KR400-28
36	MHP-KR100-36	MHP-KR200-36	MHP-KR300-36	MHP-KR400-36
45	MHP-KR100-45	MHP-KR200-45	MHP-KR300-45	MHP-KR400-45
56	MHP-KR100-56	MHP-KR200-56	MHP-KR300-56	MHP-KR400-56
70	MHP-KR100-70	MHP-KR200-70	MHP-KR300-70	MHP-KR400-70
90	MHP-KR100-90	MHP-KR200-90	MHP-KR300-90	MHP-KR400-90
110	MHP-KR100-110	MHP-KR200-110	MHP-KR300-110	MHP-KR400-110
140	MHP-KR100-140	MHP-KR200-140	MHP-KR300-140	MHP-KR400-140

**Tube Kit – Cylinder Tube End Seals** Contain two each of items 47, 26 (no backup washer on 25-50mm bore).

## Piston Kit

**B-Style Piston Kit** – (includes Cylinder Body End Seals)

Contains two each of items 47, 26 (no backup washer in 25mm-50mm bores), two of item 127 and one each of items 125, 126.

**Lipseal Piston Kit** – (includes Cylinder Body End Seals)

Contains two each of items 42, 44 and 47.

Rod Ø	Tube Seal Kit		B-Style Piston Seal Kit		Piston Lipseal Kit <sup>1</sup>
	Standard	Fluorocarbon	Standard	Fluorocarbon	
25	MHP-ES100-25	MHP-ES200-25	MHP-KB100-25	MHP-KB200-25	MHP-KB210-25
32	MHP-ES100-32	MHP-ES200-32	MHP-KB100-32	MHP-KB200-32	MHP-KB210-32
40	MHP-ES100-40	MHP-ES200-40	MHP-KB100-40	MHP-KB200-40	MHP-KB210-40
50	MHP-ES100-50	MHP-ES200-50	MHP-KB100-50	MHP-KB200-50	—
63	MHP-ES100-63	MHP-ES200-63	MHP-KB100-63	MHP-KB200-63	—
80	MHP-ES100-80	MHP-ES200-80	MHP-KB100-80	MHP-KB200-80	—
100	MHP-ES100-100	MHP-ES200-100	MHP-KB100-100	MHP-KB200-100	—
125	MHP-ES100-125	MHP-ES200-125	MHP-KB100-125	MHP-KB200-125	—
160	MHP-ES100-160	MHP-ES200-160	MHP-KB100-160	MHP-KB200-160	—
200	MHP-ES100-200	MHP-ES200-200	MHP-KB100-200	MHP-KB200-200	—

<sup>1</sup> Piston Lipseals were made standard in 20mm-40mm bore beginning in June 2006. Verify piston construction by serial number prior to specifying piston kits for 25mm-40mm bore. Piston Lipseal Kits contain Group 5 seals that are also suitable for Group 1 Service.

## Tie Rod Torques

Bore Ø	Tie Rod Torque Nm
25	4.5-5.0
32	7.6-9.0
40	19.0-20.5
50	68-71
63	68-71
80	160-165
100	160-165
125	450-455
160	815-830
200	1140-1155

## Repairs

Although MHP cylinders are designed to make on-site maintenance or repairs as easy as possible, some operations can only be carried out in our factory. It is standard policy to fit a cylinder returned to the factory for repair with those replacement parts which are necessary to return it to 'as good as new' condition. Should the condition of the returned cylinder be such that repair would be uneconomical, you will be notified.

## How to Order ISO Cylinders

### Data Required On All Cylinder Orders

When ordering MHP Series cylinders, be sure to specify each of the following requirements:

(NOTE: – Duplicate cylinders can be ordered by giving the SERIAL NUMBER from the original cylinder. Factory records supply a quick, positive identification.)

**a) Series Designation (“MHP”)**

**b) Mounting Model**

Specify your choice of mounting – as shown and dimensioned in this catalog.

**c) Seals**

**d) Piston Rod End Thread Style**

Call out thread style letter or specify dimensions. Thread style M will be furnished if not otherwise specified.

**e) Cushions (if required)**

Specify “Cushion-head end,” “Cushion-cap end” or “Cushion-both ends” as required. If cylinder is to have a double rod and only one cushion is required, be sure to specify clearly which end of the cylinder is to be cushioned.

**f) Bore Size**

**g) Length of Stroke**

**h) Piston Rod Diameter**

Call out rod diameter. In MHP Series cylinders, standard rod diameters will be furnished if not otherwise specified, unless length of stroke makes the application questionable.

**i) Ports**

BSPP (ISO 228) are standard.

**j) Port Locations**

**k) Modifications**

Any modifications that are not identified in the cylinder number shown on the following page should be added to the specifications. These can include special fluids, special seals, air bleeds, double rod cylinders with different rod end styles and diameters. For further information consult factory.

### Service Policy

On cylinders returned to the factory for repairs, it is standard policy for Miller Fluid Power to make such part replacements as will put the cylinder in as good as new condition. Should the condition of the returned cylinder be such that expenses for repair would exceed the costs of a new one, you will be notified.

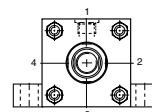
### Certified Dimensions

Miller Fluid Power guarantees that all cylinders ordered from this catalog will be built to dimensions shown. All dimensions are certified to be correct, and thus it is not necessary to request certified drawings.



**How to Order – Example: MHP-72BMN-200-0600-090-R11-1-0**

MHP	72	B	M	N	-200	-0600	-090	-R	1	1	-0
Series	Mounting Style	Bushing	Rod End Style	Cushions	Bore Dia. mm	Stroke mm	Rod Dia. mm	Port Type	Port Location		Modified
MHP DMHP (D= Double Rod End)		B = Externally Remov- able Bushing	M (Std.) S T X (Special)	R = Rod End Cushioned C = Cap End Cushioned B = Both Ends Cushioned N = Non-Cushioned				R = BSPP ISO 228 (Standard) M = ISO 6149-1 S = SAE Str. Thd. J = BSPT F = SAE Flange N = NPTF G = Metric Str. Thd.	Head End 1 (Std.) 2 3 4	Cap End 1 2 3 4	0 = Standard 9 <sup>1</sup> = Modified



<sup>1</sup> The number 9 refers to special options or modifications that deviate from the standard product offering. Non-standard modifications and options not identified in the cylinder model number should be added in the notes when placing an order.

Note: The standard #1 port location is at the top of the cylinder, and the standard cushion adjustment screw is in position #2 when facing the rod end of the cylinder. If multiple ports are required, the last number of the part number should be 9, indicating modified and the location of ports desired.

**Modifications which can be placed under the designator '9' are as follows:**

- Fluorocarbon Seals – for applications that require fire resistant fluids or hydraulic oil at temperatures up to and including 150°C
- Stop Tubing
- Special Port Threads
- Multiple Ports
- Air Bleeds
- Bushing Drain
- Key Retainer
- Special Mounts

## Safety Guide for Selecting and Using Hydraulic, Pneumatic Cylinders and Their Accessories

**WARNING:** ⚠ **FAILURE OF THE CYLINDER, ITS PARTS, ITS MOUNTING, ITS CONNECTIONS TO OTHER OBJECTS, OR ITS CONTROLS CAN RESULT IN:**

- Unanticipated or uncontrolled movement of the cylinder or objects connected to it.
- Falling of the cylinder or objects held up by it.
- Fluid escaping from the cylinder, potentially at high velocity.

**THESE EVENTS COULD CAUSE DEATH OR PERSONAL INJURY BY, FOR EXAMPLE, PERSONS FALLING FROM HIGH LOCATIONS, BEING CRUSHED OR STRUCK BY HEAVY OR FAST MOVING OBJECTS, BEING PUSHED INTO DANGEROUS EQUIPMENT OR SITUATIONS, OR SLIPPING ON ESCAPED FLUID.**

Before selecting or using Parker Hannifin Corporation (the Company) cylinders or related accessories, it is important that you read, understand and follow the following safety information. Training is advised before selecting and using the Company's products.

### 1.0 General Instructions

**1.1 Scope** – This safety guide provides instructions for selecting and using (including assembling, installing, and maintaining) cylinder products. This safety guide is a supplement to and is to be used with the specific Company publications for the specific cylinder products that are being considered for use.

**1.2 Fail Safe** – Cylinder products can and do fail without warning for many reasons. All systems and equipment should be designed in a fail-safe mode so that if the failure of a cylinder product occurs people and property won't be endangered.

**1.3 Distribution** – Provide a free copy of this safety guide to each person responsible for selecting or using cylinder products. Do not select or use the Company's cylinders without thoroughly reading and understanding this safety guide as well as the specific Company publications for the products considered or selected.

**1.4 User Responsibility** – Due to very wide variety of cylinder applications and cylinder operating conditions, the Company does not warrant that any particular cylinder is suitable for any specific application. This safety guide does not analyze all technical parameters that must be considered in selecting a product. The hydraulic and pneumatic cylinders outlined in this catalog are designed to the Company's design guidelines and do not necessarily meet the design guideline of other agencies such as American Bureau of Shipping, ASME Pressure Vessel Code etc. The user, through its own analysis and testing, is solely responsible for:

- Making the final selection of the cylinders and related accessories.
- Determining if the cylinders are required to meet specific design requirements as required by the Agency(s) or industry standards covering the design of the user's equipment.
- Assuring that the user's requirements are met, OSHA requirements are met, and safety guidelines from the applicable agencies such as but not limited to ANSI are followed and that the use presents no health or safety hazards.
- Providing all appropriate health and safety warnings on the equipment on which the cylinders are used.

**1.5 Additional Questions** – Call the appropriate Company technical service department if you have any questions or require any additional information. See the Company publication for the product being considered or used, or call 1-847-298-2400, or go to [www.parker.com](http://www.parker.com), for telephone numbers of the appropriate technical service department.

### 2.0 Cylinder and Accessories Selection

**2.1 Seals** – Part of the process of selecting a cylinder is the selection of seal compounds. Before making this selection, consult the "seal information page(s)" of the publication for the series of cylinders of interest.

The application of cylinders may allow fluids such as cutting fluids, wash down fluids etc. to come in contact with the external area of the cylinder. These fluids may attack the piston rod wiper and or the primary seal and must be taken into account when selecting and specifying seal compounds.

Dynamic seals will wear. The rate of wear will depend on many operating factors. Wear can be rapid if a cylinder is mis-aligned or if the cylinder has been improperly serviced. The user must take seal wear into consideration in the application of cylinders.

**2.2 Piston Rods** – Possible consequences of piston rod failure or separation of the piston rod from the piston include, but are not limited to are:

- Piston rod and or attached load thrown off at high speed.
- High velocity fluid discharge.
- Piston rod extending when pressure is applied in the piston retract mode.

Piston rods or machine members attached to the piston rod may move suddenly and without warning as a consequence of other conditions occurring to the machine such as, but not limited to:

- Unexpected detachment of the machine member from the piston rod.

- Failure of the pressurized fluid delivery system (hoses, fittings, valves, pumps, compressors) which maintain cylinder position.
- Catastrophic cylinder seal failure leading to sudden loss of pressurized fluid.
- Failure of the machine control system.

Follow the recommendations of the "Piston Rod Selection Chart and Data" in the publication for the series of cylinders of interest. The suggested piston rod diameter in these charts must be followed in order to avoid piston rod buckling.

Piston rods are not normally designed to absorb bending moments or loads which are perpendicular to the axis of piston rod motion. These additional loads can cause the piston rod to fail. If these types of additional loads are expected to be imposed on the piston rod, their magnitude should be made known to our engineering department.

The cylinder user should always make sure that the piston rod is securely attached to the machine member.

On occasion cylinders are ordered with double rods (a piston rod extended from both ends of the cylinder). In some cases a stop is threaded on to one of the piston rods and used as an external stroke adjuster. On occasions spacers are attached to the machine member connected to the piston rod and also used as a stroke adjuster. In both cases the stops will create a pinch point and the user should consider appropriate use of guards. If these external stops are not perpendicular to the mating contact surface, or if debris is trapped between the contact surfaces, a bending moment will be placed on the piston rod, which can lead to piston rod failure. An external stop will also negate the effect of cushioning and will subject the piston rod to impact loading. Those two (2) conditions can cause piston rod failure. Internal stroke adjusters are available with and without cushions. The use of external stroke adjusters should be reviewed with our engineering department.

The piston rod to piston and the stud to piston rod threaded connections are secured with an anaerobic adhesive. The strength of the adhesive decreases with increasing temperature. Cylinders which can be exposed to temperatures above +250°F (+121°C) are to be ordered with a non studded piston rod and a pinned piston to rod joint.

**2.3 Cushions** – Cushions should be considered for cylinder applications when the piston velocity is expected to be over 4 inches/second.

Cylinder cushions are normally designed to absorb the energy of a linear applied load. A rotating mass has considerably more energy than the same mass moving in a linear mode. Cushioning for a rotating mass application should be reviewed by our engineering department.

**2.4 Cylinder Mountings** – Some cylinder mounting configurations may have certain limitations such as but not limited to minimum stroke for side or foot mounting cylinders or pressure de-ratings for certain mounts. Carefully review the catalog for these types of restrictions.

Always mount cylinders using the largest possible high tensile alloy steel socket head cap screws that can fit in the cylinder mounting holes and torque them to the manufacturer's recommendations for their size.

**2.5 Port Fittings** – Hydraulic cylinders applied with meter out or deceleration circuits are subject to intensified pressure at piston rod end.

The rod end pressure is approximately equal to:

$$\frac{\text{operating pressure} \times \text{effective cap end area}}{\text{effective rod end piston area}}$$

Contact your connector supplier for the pressure rating of individual connectors.

### 3.0 Cylinder and Accessories Installation and Mounting

#### 3.1 Installation

**3.1.1** – Cleanliness is an important consideration, and cylinders are shipped with the ports plugged to protect them from contaminants entering the ports. These plugs should not be removed until the piping is to be installed. Before making the connection to the cylinder ports, piping should be thoroughly cleaned to remove all chips or burrs which might have resulted from threading or flaring operations.

**3.1.2** – Cylinders operating in an environment where air drying materials are present such as fast-drying chemicals, paint, or weld splatter, or other hazardous conditions such as excessive heat, should have shields installed to prevent damage to the piston rod and piston rod seals.

**3.1.3** – Proper alignment of the cylinder piston rod and its mating component on the machine should be checked in both the extended and retracted positions. Improper alignment will result in excessive rod gland and/or cylinder bore wear. On fixed mounting cylinders attaching the piston rod while the rod is retracted will help in achieving proper alignment.

**3.1.4** – Sometimes it may be necessary to rotate the piston rod in order to thread the piston rod into the machine member. This operation must always be done with zero pressure being applied to either side of the piston. Failure to follow this procedure may result in loosening the piston to rod-threaded connection. In some rare cases the turning of the piston rod may rotate a threaded piston rod gland and loosen it from the cylinder head. Confirm that this condition is not occurring. If it does, re-tighten the piston rod gland firmly against the cylinder head.

For double rod cylinders it is also important that when attaching or detaching the piston rod from the machine member that the torque be applied to the piston rod end of the cylinder that is directly attaching to the machine member with the opposite end unrestrained. If the design of the machine is such that only the rod end of the cylinder opposite to where the rod attaches to the machine member can be rotated, consult the factory for further instructions.

## **3.2 Mounting Recommendations**

**3.2.1** – Always mount cylinders using the largest possible high tensile alloy steel socket head screws that can fit in the cylinder mounting holes and torque them to the manufacturer's recommendations for their size.

**3.2.2** – Side-Mounted Cylinders – In addition to the mounting bolts, cylinders of this type should be equipped with thrust keys or dowel pins located so as to resist the major load.

**3.2.3** – Tie Rod Mounting – Cylinders with tie rod mountings are recommended for applications where mounting space is limited. The standard tie rod extension is shown as BB in dimension tables. Longer or shorter extensions can be supplied. Nuts used for this mounting style should be torqued to the same value as the tie rods for that bore size.

**3.2.4** – Flange Mount Cylinders – The controlled diameter of the rod gland extension on head end flange mount cylinders can be used as a pilot to locate the cylinders in relation to the machine. After alignment has been obtained, the flanges may be drilled for pins or dowels to prevent shifting.

**3.2.5** – Trunnion Mountings – Cylinders require lubricated bearing blocks with minimum bearing clearances. Bearing blocks should be carefully aligned and rigidly mounted so the trunnions will not be subjected to bending moments. The rod end should also be pivoted with the pivot pin in line and parallel to axis of the trunnion pins.

**3.2.6** – Clevis Mountings – Cylinders should be pivoted at both ends with centerline of pins parallel to each other. After cylinder is mounted, be sure to check to assure that the cylinder is free to swing through its working arc without interference from other machine parts.

## **4.0 Cylinder and Accessories Maintenance, Troubleshooting and Replacement**

**4.1 Storage** – At times cylinders are delivered before a customer is ready to install them and must be stored for a period of time. When storage is required the following procedures are recommended.

**4.1.1** – Store the cylinders in an indoor area which has a dry, clean and noncorrosive atmosphere. Take care to protect the cylinder from both internal corrosion and external damage.

**4.1.2** – Whenever possible cylinders should be stored in a vertical position (piston rod up). This will minimize corrosion due to possible condensation which could occur inside the cylinder. This will also minimize seal damage.

**4.1.3** – Port protector plugs should be left in the cylinder until the time of installation.

**4.1.4** – If a cylinder is stored full of hydraulic fluid, expansion of the fluid due to temperature changes must be considered. Installing a check valve with free flow out of the cylinder is one method.

**4.1.5** – When cylinders are mounted on equipment that is stored outside for extended periods, exposed unpainted surfaces, e.g. piston rod, must be coated with a rust-inhibiting compound to prevent corrosion.

## **4.2 Cylinder Trouble Shooting**

### **4.2.1 – External Leakage**

**4.2.1.1** – Rod seal leakage can generally be traced to worn or damaged seals. Examine the piston rod for dents, gouges or score marks, and replace piston rod if surface is rough.

Rod seal leakage could also be traced to gland wear. If clearance is excessive, replace rod bushing and seal. Rod seal leakage can also be traced to seal deterioration. If seals are soft or gummy or brittle, check compatibility of seal material with lubricant used if air cylinder, or operating fluid if hydraulic cylinder. Replace with seal material, which is compatible with these fluids. If the seals are hard or have lost elasticity, it is usually due to exposure to temperatures in excess of 165°F. (+74°C). Shield the cylinder from the heat source to limit temperature to 350°F. (+177°C.) and replace with fluorocarbon seals.

**4.2.1.2** – Cylinder body seal leak can generally be traced to loose tie rods. Torque the tie rods to manufacturer's recommendation for that bore size.

Excessive pressure can also result in cylinder body seal leak. Determine maximum pressure to rated limits. Replace seals and retorque tie rods as in paragraph above. Excessive pressure can also result in cylinder body seal leak. Determine if the pressure rating of the cylinder has been exceeded. If so, bring the operating pressure down to the rating of the cylinder and have the tie rods replaced.

Pinched or extruded cylinder body seal will also result in a leak. Replace cylinder body seal and retorque as in paragraph above.

Cylinder body seal leakage due to loss of radial squeeze which shows up in the form of flat spots or due to wear on the O.D. or I.D. – Either of these are symptoms of normal wear due to high cycle rate or length of service. Replace seals as per paragraph above.

### **4.2.2 – Internal Leakage**

**4.2.2.1** – Piston seal leak (by-pass) 1 to 3 cubic inches per minute leakage is considered normal for piston ring construction. Virtually no static leak with lipseal type seals on piston should be expected. Piston seal wear is a usual cause of piston seal leakage. Replace seals as required.

**4.2.2.2** – With lipseal type piston seals excessive back pressure due to over-adjustment of speed control valves could be a direct cause of rapid seal wear. Contamination in a hydraulic system can result in a scored cylinder bore, resulting in rapid seal wear. In either case, replace piston seals as required.

**4.2.2.3** – What appears to be piston seal leak, evidenced by the fact that the cylinder drifts, is not always traceable to the piston. To make sure, it is suggested that one side of the cylinder piston be pressurized and the fluid line at the opposite port be disconnected. Observe leakage. If none is evident, seek the cause of cylinder drift in other component parts in the circuit.

### **4.2.3 – Cylinder Fails to Move the Load**

**4.2.3.1** – Pneumatic or hydraulic pressure is too low. Check the pressure at the cylinder to make sure it is to circuit requirements.

**4.2.3.2** – Piston Seal Leak – Operate the valve to cycle the cylinder and observe fluid flow at valve exhaust ports at end of cylinder stroke. Replace piston seals if flow is excessive.

**4.2.3.3** – Cylinder is undersized for the load – Replace cylinder with one of a larger bore size.

### **4.3 Erratic or Chatter Operation**

**4.3.1** – Excessive friction at rod gland or piston bearing due to load misalignment – Correct cylinder-to-load alignment.

**4.3.2** – Cylinder sized too close to load requirements – Reduce load or install larger cylinder.

**4.3.3** – Erratic operation could be traced to the difference between static and kinetic friction. Install speed control valves to provide a back pressure to control the stroke.

**4.4 Cylinder Modifications, Repairs, or Failed Component** – Cylinders as shipped from the factory are not to be disassembled and or modified. If cylinders require modifications, these modifications must be done at company locations or by the Company's certified facilities. The Cylinder Division Engineering Department must be notified in the event of a mechanical fracture or permanent deformation of any cylinder component (excluding seals). This includes a broken piston rod, tie rod, mounting accessory or any other cylinder component. The notification should include all operation and application details. This information will be used to provide an engineered repair that will prevent recurrence of the failure.

It is allowed to disassemble cylinders for the purpose of replacing seals or seal assemblies. However, this work must be done by strictly following all the instructions provided with the seal kits.

## Offer of Sale

The items described in this document and other documents and descriptions provided by Parker Hannifin Corporation, its subsidiaries and its authorized distributors ("Seller") are hereby offered for sale at prices to be established by Seller. This offer and its acceptance by any customer ("Buyer") shall be governed by all of the following Terms and Conditions. Buyer's order for any item described in its document, when communicated to Seller verbally, or in writing, shall constitute acceptance of this offer. All goods, services or work described will be referred to as "Products".

**1. Terms and Conditions.** Seller's willingness to offer Products, or accept an order for Products, to or from Buyer is subject to these Terms and Conditions or any newer version of the terms and conditions found on-line at [www.parker.com/saleterms/](http://www.parker.com/saleterms/). Seller objects to any contrary or additional terms or conditions of Buyer's order or any other document issued by Buyer.

**2. Price Adjustments; Payments.** Prices stated on Seller's quote or other documentation offered by Seller are valid for 30 days, and do not include any sales, use, or other taxes unless specifically stated. Unless otherwise specified by Seller, all prices are F.C.A. Seller's facility (INCOTERMS 2010). Payment is subject to credit approval and is due 30 days from the date of invoice or such other term as required by Seller's Credit Department, after which Buyer shall pay interest on any unpaid invoices at the rate of 1.5% per month or the maximum allowable rate under applicable law.

**3. Delivery Dates; Title and Risk; Shipment.** All delivery dates are approximate and Seller shall not be responsible for any damages resulting from any delay. Regardless of the manner of shipment, title to any products and risk of loss or damage shall pass to Buyer upon placement of the products with the shipment carrier at Seller's facility. Unless otherwise stated, Seller may exercise its judgment in choosing the carrier and means of delivery. No deferment of shipment at Buyers' request beyond the respective dates indicated will be made except on terms that will indemnify, defend and hold Seller harmless against all loss and additional expense. Buyer shall be responsible for any additional shipping charges incurred by Seller due to Buyer's acts or omissions.

**4. Warranty.** Seller warrants that the Products sold hereunder shall be free from defects in material or workmanship for a period of eighteen months from the date of delivery to Buyer. The prices charged for Seller's products are based upon the exclusive limited warranty stated above, and upon the following disclaimer: **DISCLAIMER OF WARRANTY: THIS WARRANTY COMPRISES THE SOLE AND ENTIRE WARRANTY PERTAINING TO PRODUCTS PROVIDED HEREUNDER. SELLER DISCLAIMS ALL OTHER WARRANTIES, EXPRESS AND IMPLIED, INCLUDING DESIGN, MERCHANTABILITY AND FITNESS FOR A PARTICULAR PURPOSE.**

**5. Claims; Commencement of Actions.** Buyer shall promptly inspect all Products upon delivery. No claims for shortages will be allowed unless reported to the Seller within 10 days of delivery. No other claims against Seller will be allowed unless asserted in writing within 30 days after delivery. Buyer shall notify Seller of any alleged breach of warranty within 30 days after the date the defect is or should have been discovered by Buyer. Any action based upon breach of this agreement or upon any other claim arising out of this sale (other than an action by Seller for an amount due on any invoice) must be commenced within 12 months from the date of the breach without regard to the date breach is discovered.

**6. LIMITATION OF LIABILITY.** UPON NOTIFICATION, SELLER WILL, AT ITS OPTION, REPAIR OR REPLACE A DEFECTIVE PRODUCT, OR REFUND THE PURCHASE PRICE. **IN NO EVENT SHALL SELLER BE LIABLE TO BUYER FOR ANY SPECIAL, INDIRECT, INCIDENTAL OR CONSEQUENTIAL DAMAGES ARISING OUT OF, OR AS THE RESULT OF, THE SALE, DELIVERY, NON-DELIVERY, SERVICING, USE OR LOSS OF USE OF THE PRODUCTS OR ANY PART THEREOF, OR FOR ANY CHARGES OR EXPENSES OF ANY NATURE INCURRED WITHOUT SELLER'S WRITTEN CONSENT, EVEN IF SELLER HAS BEEN NEGLIGENT, WHETHER IN CONTRACT, TORT OR OTHER LEGAL THEORY. IN NO EVENT SHALL SELLER'S LIABILITY UNDER ANY CLAIM MADE BY BUYER EXCEED THE PURCHASE PRICE OF THE PRODUCTS.**

**7. User Responsibility.** The user, through its own analysis and testing, is solely responsible for making the final selection of the system and Product and assuring that all performance, endurance, maintenance, safety and warning requirements of the application are met. The user must analyze all aspects of the application and follow applicable industry standards and Product information. If Seller provides Product or system options, the user is responsible for determining that such data and specifications are suitable and sufficient for all applications and reasonably foreseeable uses of the Products or systems.

**8. Loss to Buyer's Property.** Any designs, tools, patterns, materials, drawings, confidential information or equipment furnished by Buyer or any other items which become Buyer's property, will be considered obsolete and may be destroyed by Seller after two consecutive years have elapsed without Buyer ordering the items manufactured using such property. Seller shall not be responsible for any loss or damage to such property while it is in Seller's possession or control.

**9. Special Tooling.** A tooling charge may be imposed for any special tooling, including without limitation, dies, fixtures, molds and patterns, acquired to manufacture Products. Such special tooling shall be and remain Seller's property notwithstanding payment of any charges by Buyer. In no event will Buyer acquire any interest in apparatus belonging to Seller which is utilized in the manufacture of the Products, even if such apparatus has been specially converted or adapted for such manufacture and notwithstanding any charges paid by Buyer. Unless otherwise agreed, Seller shall have the right to alter, discard or otherwise dispose of any special tooling or other property in its sole discretion at any time.

**10. Buyer's Obligation; Rights of Seller.** To secure payment of all sums due or otherwise, Seller shall retain a security interest in the goods delivered and this agreement shall be deemed a Security Agreement under the Uniform Commercial Code. Buyer authorizes Seller as its attorney to execute and file on Buyer's behalf all documents Seller deems necessary to perfect its security interest.

**11. Improper use and Indemnity.** Buyer shall indemnify, defend, and hold Seller harmless from any claim, liability, damages, lawsuits, and costs (including attorney fees), whether for personal injury, property damage, patent, trademark or copyright

infringement or any other claim, brought by or incurred by Buyer, Buyer's employees, or any other person, arising out of: (a) improper selection, improper application or other misuse of Products purchased by Buyer from Seller; (b) any act or omission, negligent or otherwise, of Buyer; (c) Seller's use of patterns, plans, drawings, or specifications furnished by Buyer to manufacture Product; or (d) Buyer's failure to comply with these terms and conditions. Seller shall not indemnify Buyer under any circumstance except as otherwise provided.

**12. Cancellations and Changes.** Orders shall not be subject to cancellation or change by Buyer for any reason, except with Seller's written consent and upon terms that will indemnify, defend and hold Seller harmless against all direct, incidental and consequential loss or damage. Seller may change product features, specifications, designs and availability with notice to Buyer.

**13. Limitation on Assignment.** Buyer may not assign its rights or obligations under this agreement without the prior written consent of Seller.

**14. Force Majeure.** Seller does not assume the risk and shall not be liable for delay or failure to perform any of Seller's obligations by reason of circumstances beyond the reasonable control of Seller (hereinafter "Events of Force Majeure"). Events of Force Majeure shall include without limitation: accidents, strikes or labor disputes, acts of any government or government agency, acts of nature, delays or failures in delivery from carriers or suppliers, shortages of materials, or any other cause beyond Seller's reasonable control.

**15. Waiver and Severability.** Failure to enforce any provision of this agreement will not waive that provision nor will any such failure prejudice Seller's right to enforce that provision in the future. Invalidation of any provision of this agreement by legislation or other rule of law shall not invalidate any other provision herein. The remaining provisions of this agreement will remain in full force and effect.

**16. Termination.** Seller may terminate this agreement for any reason and at any time by giving Buyer thirty (30) days written notice of termination. Seller may immediately terminate this agreement, in writing, if Buyer: (a) commits a breach of any provision of this agreement (b) appoints a trustee, receiver or custodian for all or any part of Buyer's property (c) files a petition for relief in bankruptcy on its own behalf, or by a third party (d) makes an assignment for the benefit of creditors, or (e) dissolves or liquidates all or a majority of its assets.

**17. Governing Law.** This agreement and the sale and delivery of all Products hereunder shall be deemed to have taken place in and shall be governed and construed in accordance with the laws of the State of Ohio, as applicable to contracts executed and wholly performed therein and without regard to conflicts of laws principles. Buyer irrevocably agrees and consents to the exclusive jurisdiction and venue of the courts of Cuyahoga County, Ohio with respect to any dispute, controversy or claim arising out of or relating to this agreement.

**18. Indemnity for Infringement of Intellectual Property Rights.** Seller shall have no liability for infringement of any patents, trademarks, copyrights, trade dress, trade secrets or similar rights except as provided in this Section. Seller will defend and indemnify Buyer against allegations of infringement of U.S. patents, U.S. trademarks, copyrights, trade dress and trade secrets ("Intellectual Property Rights"). Seller will defend at its expense and will pay the cost of any settlement or damages awarded in an action brought against Buyer based on an allegation that a Product sold pursuant to this Agreement infringes the Intellectual Property Rights of a third party. Seller's obligation to defend and indemnify Buyer is contingent on Buyer notifying Seller within ten (10) days after Buyer becomes aware of such allegations of infringement, and Seller having sole control over the defense of any allegations or actions including all negotiations for settlement or compromise. If a Product is subject to a claim that it infringes the Intellectual Property Rights of a third party, Seller may, at its sole expense and option, procure for Buyer the right to continue using the Product, replace or modify the Product so as to make it noninfringing, or offer to accept return of the Product and return the purchase price less a reasonable allowance for depreciation. Notwithstanding the foregoing, Seller shall have no liability for claims of infringement based on information provided by Buyer, or directed to Products delivered hereunder for which the designs are specified in whole or part by Buyer, or infringements resulting from the modification, combination or use in a system of any Product sold hereunder. The foregoing provisions of this Section shall constitute Seller's sole and exclusive liability and Buyer's sole and exclusive remedy for infringement of Intellectual Property Rights.

**19. Entire Agreement.** This agreement contains the entire agreement between the Buyer and Seller and constitutes the final, complete and exclusive expression of the terms of sale. All prior or contemporaneous written or oral agreements or negotiations with respect to the subject matter are herein merged.

**20. Compliance with Law, U. K. Bribery Act and U.S. Foreign Corrupt Practices Act.** Buyer agrees to comply with all applicable laws and regulations, including both those of the United Kingdom and the United States of America, and of the country or countries of the Territory in which Buyer may operate, including without limitation the U. K. Bribery Act, the U.S. Foreign Corrupt Practices Act ("FCPA") and the U.S. Anti-Kickback Act (the "Anti-Kickback Act"), and agrees to indemnify and hold harmless Seller from the consequences of any violation of such provisions by Buyer, its employees or agents. Buyer acknowledges that they are familiar with the provisions of the U. K. Bribery Act, the FCPA and the Anti-Kickback Act, and certifies that Buyer will adhere to the requirements thereof. In particular, Buyer represents and agrees that Buyer shall not make any payment or give anything of value, directly or indirectly to any governmental official, any foreign political party or official thereof, any candidate for foreign political office, or any commercial entity or person, for the purpose of influencing such person to purchase products or otherwise benefit the business of Seller.





**Miller Fluid Power**

500 South Wolf Road  
Des Plaines, IL 60016 USA  
Tel.: (847) 298-2400  
Fax: (800) 892-1008  
E-mail: MFPCylmktg@parker.com  
Website: www.miller-fluidpower.com

**Miller Fluid Power**

160 Chisholm Drive  
Milton, Ontario  
Canada L9T 3G9  
Tel.: (905) 693-3000  
Fax: (905) 876-1958

All specifications and information subject to  
change without notice or prior obligation.

Catalog HY08-M1151-3/NA  
10/16

