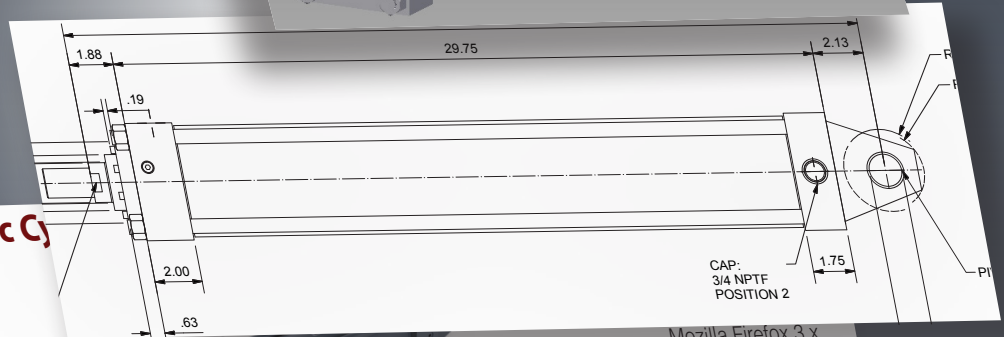
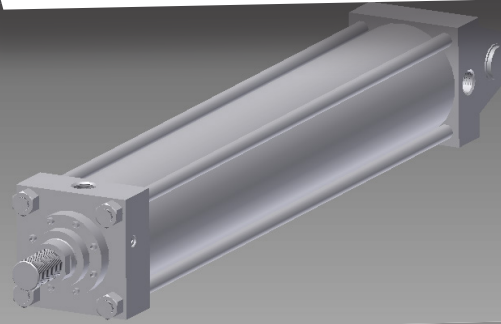


Model Number

HV284B2B-4.00-24.000-0175-N11T-0



Series HV2 Heavy Duty Hydraulic Cylinder

Model Number

HV284B2B-4.00-24.000-0175-N11T-0

LIST

\$2289.70

LIST

\$2289.70

(UNITED STATES DOLLAR)

Add to Order Go To
Catalog Search

Add to Order Cont.
Series Entry

Add to Order Go To
Place An Order

View Summary

Refresh

Quit

CPN

Generate CAD

Mozilla Firefox 3.x,
Apple Safari 3.x,
Google Chrome 1.x,
Opera 9.x

Description

Cylinder

HV2 – Single Rod Heavy Duty Hydraulic Tie Rod

84 – Cap Fixed Clevis (NFPA MP1)

B – Bolted Bronze

2 – Style 2 Small Male

Files Warning

Special Instructions

CPN

1H000015287

ICD Parker Configuration System Quick Reference Guide

Series HV2

Pneumatic and Hydraulic Cylinders

aerospace
climate control
electromechanical
filtration
fluid & gas handling
hydraulics
pneumatics
process control
sealing & shielding



ENGINEERING YOUR SUCCESS.

ICD Quick Reference Guide

for Miller Fluid Power Series HV2 Hydraulic Cylinders

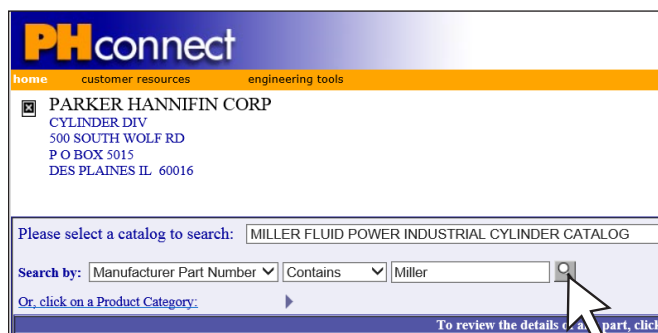
To Begin...

Log in to PHconnect.com, and mouse over the "Customer Resources Menu". In the list that appears highlight and click on the "catalog search" selection.

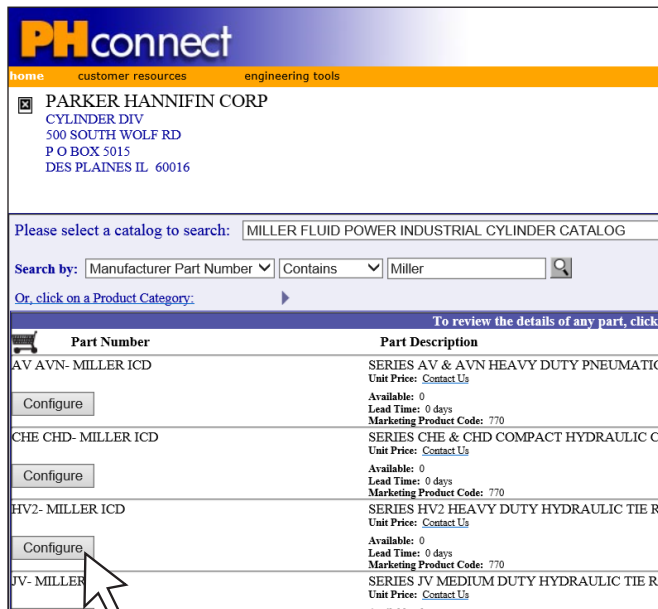


In the "Please select a catalog" dialog box choose "Miller Fluidpower Industrial Cylinder Catalog".

In the next two search fields, select "Manufacturer Part Number" and then "Contains". Type "Miller" in the open field and click on the search icon.



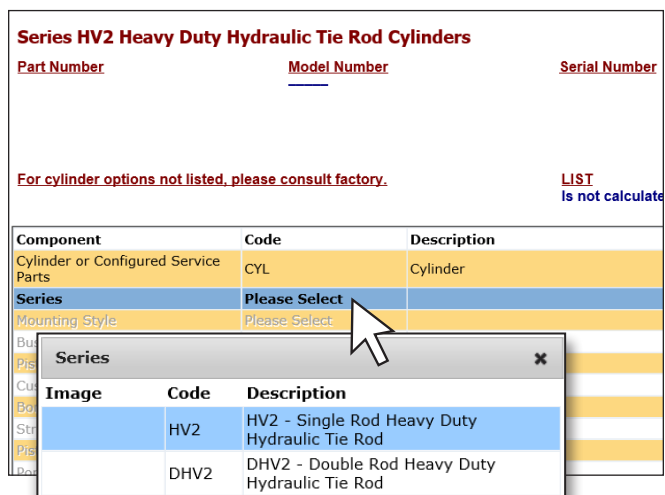
When the search results appear, select the "Configure" button under the listing "HV2 - MILLER ICD".



Series

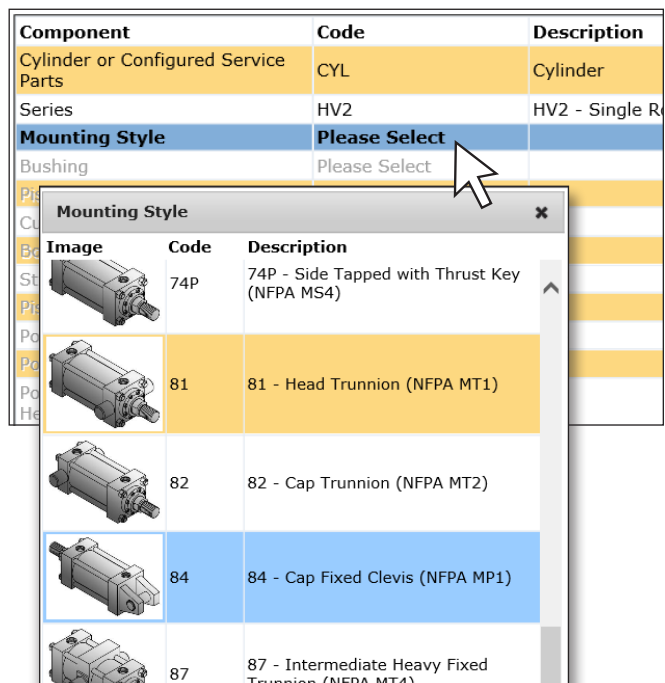
You have now entered the **ICD Model Number Configurator** area.

Click on "Please Select" and select the series of cylinder that best suits your application. For our example, we have selected Code HV2 for HV2 - Single Rod Heavy Duty Hydraulic Tie Rod.



Mounting Style

Click on "Please Select" and select a mounting style from the available list. For our example model number, we have selected Code 84 for 84 - Cap Fixed Clevis.



Bushing

Click on “Please Select” and select from a list of available bushings. For our example model number, we have selected Code B for B - Bolted Bronze.

Component	Code	Description
Cylinder or Configured Service Parts	CYL	Cylinder
Series	HV2	HV2 - Single Rod
Mounting Style	84	84 - Cap Fixed
Bushing	Please Select	
Piston Rod End Style	Please Select	

Image	Code	Description
	B	B - Bolted Bronze
	R	R - Retainer Held Bronze
	I	I - Bolted Iron
	N	N - Retainer Held Iron

When you make your bushing selection you will notice that an icon appears in the warning column. If you click on that icon a warning box will appear that reads: “Bolted or Retainer held style bushing construction selection will limit bore and piston rod diameter choices below. See B & R chart for standard bushing construction.”

Code	Description	Files	Warning	Spec
CYL	Cylinder			
HV2	HV2 - Single Rod Heavy Duty Hydraulic Tie Rod			
81	81 - Head Trunnion (NFPA MT1)			
B	B - Bolted Bronze			

Image	Code	Description
	N	N - No Cushions
	R	R - Cushion Head
	C	C - Cushion Cap
	B	B - Cushion Both Ends

B & R Chart

Bore	Rod Dia.	52, 62, 66, 68, 72, 74, 81, 82, 84, 89, 94	51, 53	61, 65	67
1.50	0.625	B	R	R	B
	1.000	R	R	R	B
2.00	1.000	B	R	R	B
	1.375	R	R	R	B
2.50	1.000	B	B	B	B
	1.375	B	B	B	B
	1.750	B	B	R	B
3.25	1.375	B	B	B	B
	1.750	B	B	B	B
	2.000	B	B	B	B
4.00	1.750	B	B	B	B
	2.000	B	B	B	B
	2.500	B	B	B	B
5.00	2.000	B	B	B	B
	2.500	B	B	B	B
	3.000	B	B	B	B
	3.500	B	B	R	B

Piston Rod End Style

Click on “Please Select” and select a piston rod end style. For our example model number, we have selected Code 2 for 2 - Style 2 Small Male.

Component	Code	Description
Cylinder or Configured Service Parts	CYL	Cylinder
Series	HV2	HV2 - Single Rod
Mounting Style	84	84 - Cap Fixed
Bushing	B	B - Bolted Bronze
Piston Rod End Style	Please Select	
Cushions	Please Select	

Image	Code	Description
	2	2 - Style 2 Small Male
	4	4 - Style 4 Short Female
	5	5 - Style 5 Intermediate Male
	9	9 - Style 9 Flange Coupling
	X	X - Style X Special

Cushions

Click on “Please Select” and select a cushion option. We have selected Code B for B - Cushion Both Ends.

Component	Code	Description
Cylinder or Configured Service Parts	CYL	Cylinder
Series	HV2	HV2 - Single Rod
Mounting Style	84	84 - Cap Fixed
Bushing	B	B - Bolted Bronze
Piston Rod End Style	2	2 - Style 2 Small Male
Cushions	Please Select	
Bore	Please Select	

Image	Code	Description
	N	N - No Cushions
	R	R - Cushion Head
	C	C - Cushion Cap
	B	B - Cushion Both Ends

6.00	2.500	B	B	B	B
	3.000	B	B	B	B
	3.500	B	B	B	B
	4.000	B	B	B	B
7.00	3.000	B	B	B	B
	3.500	B	B	B	B
	4.000	B	B	B	B
	5.000	B	B	B	B
8.00	3.500	B	B	B	B
	4.000	B	B	B	B
	5.000	B	B	B	B
	5.500	B	B	B	B

Rod Bushing Construction

B = Bolted Bushing
R = Retainer Held Bushing

Bore

Click on "Please Select" and select an available bore size. For our example model number, we have selected Code 4.00 for 4.00 Inch.

Series	HV2	HV2 - Single Rod
Mounting Style	84	84 - Cap Fixed
Bushing	B	B - Bolted Bronze
Piston Rod End Style	2	2 - Style 2 Small Male
Cushions	C	C - Cushion Cap
Bore	Please Select	
Stroke	Please Select	inch

Image	Code	Description
	1.50	1.50 Inch
	2.00	2.00 Inch
	2.50	2.50 Inch
	3.25	3.25 Inch
	4.00	4.00 Inch
	5.00	5.00 Inch
	6.00	6.00 Inch
	7.00	7.00 Inch
	8.00	8.00 Inch

Stroke

Click on "Please Select" and enter your stroke in inches in the box that appears. For our example we have entered a stroke of 24 inches as 24.00.

Bushing	B	B - Bolted Bronze
Piston Rod End Style	2	2 - Style 2 Small Male
Cushions	B	B - Cushion Both Ends
Bore	4.00	4.00 Inch
Stroke	Please Select	inch
Piston Rod Diameter	Please Select	

Code	Rule	Description
24.00	0.031 , 250.000	inch

Update Code

Piston Rod Diameter

Click on "Please Select" and choose an available piston rod diameter. For our example model number, we have selected Code 0175 for 1.75 Inch.

Bushing	B	B - Bolted Bronze
Piston Rod End Style	2	2 - Style 2 Small Male
Cushions	B	B - Cushion Both Ends
Bore	4.00	4.00 Inch
Stroke	24.000	inch
Piston Rod Diameter	Please Select	
Port Type	Please Select	

Image	Code	Description
	0175	1.75 Inch
	0200	2.00 Inch
	0250	2.50 Inch

Port Type

Click on "Please Select" and choose an available port type. For our example model number, we have selected Code N for N - NPTF Pipe Thread.

Stroke	24.000	inch
Piston Rod Diameter	0175	1.75 Inch
Port Type	Please Select	
Port Location - Head	Please Select	
Port Location - Cap (or Second Head)	Please Select	

Image	Code	Description
	S	S - SAE Straight Thread O-Ring
	N	N - NPTF Pipe Thread
	F	F - SAE 4-Bolt - Code 61
	M	M - Metric Thread per ISO-6149
	J	J - BSPT (Taper Thread)
	R	R - BSP (Parallel Thread ISO-228)
	G	G - Metric Thread

Port Location - Head

Click on "Please Select" and choose a port location for the Head. For our example model number, we have selected Code 1 for 1 - Port Position 1 - Head.

Stroke	24.000	inch
Piston Rod Diameter	0175	1.75 Inch
Port Type	N	N - NPTF Pipe Thread
Port Location - Head	Please Select	
Port Location - Cap (or Second Head)	Please Select	

Image	Code	Description
	1	1 - Port Position 1 - Head
	3	3 - Port Position 3 - Head

Port Location - Cap

Click on "Please Select" and choose a port location for the Cap (or Second Head). For our example model number, we have selected Code 1 for 1 - Port Position 1 - Cap.

Piston Rod Diameter	0175	1.75 Inch
Port Type	N	N - NPTF Pipe Thread
Port Location - Head	1	1 - Port Position 1 - Head
Port Location - Cap (or Second Head)	Please Select	

Image	Code	Description
	1	1 - Port Position 1 - Cap
	2	2 - Port Position 2 - Cap
	3	3 - Port Position 3 - Cap
	4	4 - Port Position 4 - Cap

Seals

Click on "Please Select" and choose a Seal type. For our example model number, we have selected Code 1 for T - Standard (Class 1).

Stroke	24.000	inch
Piston Rod Diameter	0175	1.75 In
Port Type	N	N - NP
Port Location - Head	1	1 - Por
Port Location - Cap (or Second Head)	1	1 - Por
Seals	Please Select	
Modified	Please Select	

Image	Code	Description
	1	T - Standard (Class 1)
	5	V - Fluorocarbon (Class 5)
	E	E - Fluorocarbon Rod Seal & Wiper (Class 5 Bushing)
	6	J - High Water Content Fluids (Class 6)
	8	H - High Temperature Seals (Class 8)
	N	N - Energized PTFE Rod Seal & Wiper (Class 8 Gland) all other seals fluorocarbon.

Modified

Click on "Please Select" and select Code 0 for Standard or Code 9 for Modified. If you select Standard, the fields for Port Size - Head, Port Size - Cap, Needle Location - Head and Needle Location - Cap will fill in with the standard configurations and your model number code is complete.

Port Location - Head	1	1 - Port Positi
Port Location - Cap (or Second Head)	1	1 - Port Positi
Seals	1	T - Standard (
Modified	Please Select	
Port Size - Head	Please Select	

Image	Code	Description
	0	0 - Standard
	9	9 - Modified - Describe in Part Special Instructions below.

Model code completes as:

Modified	0	0 - Standard
Port Size - Head	NP75	3/4 Inch NPTF
Port Size - Cap (or Second Head)	NP75	3/4 Inch NPTF
Needle Location - Head	2	Needle Valve Position 2 - Head
Needle Location - Cap (or Second Head)	2	Needle Valve Position 2 - Cap

Modified (continued)

If you select Code 9 Modified, then you will get a list of modifications to choose from.

Image	Code	Description
	0	0 - Standard
	9	9 - Modified - Describe in Part Special Instructions below.

Modified	9	9 - Modified - Describe in Part Special Instructions below.
Special Mounting	—	Standard mounting style dimensions
Combination Mounting	—	No Combination Mounting
Piston	L	Lipseal
Port Size - Head	NP75	3/4 Inch NPTF
Port Location - Head	1	Port Position 1 - Head
Additional Port - Head	—	No Additional Port - Head
Port Size - Cap (or Second Head)	NP75	3/4 Inch NPTF
Port Location - Cap (or Second Head)	2	Port Position 2 - Cap
Additional Port - Cap (or Second Head)	—	No Additional Port - Cap
Proximity Switch - Head	—	No Switch Head
Proximity Switch - Cap (or Second Head)	—	No Switch Cap
Needle Location - Head	3	Needle Valve Position 3 - Head
Needle Location - Cap (or Second Head)	3	Needle Valve Position 3 - Cap
Gland Drain	—	No Gland Drain
Rod Wiper	—	Standard Wiperseal
Gland Wear Ring	—	No Wear Ring Gland
Piston Rod Wrench Flats	2F	Standard 2 Wrench Flats
Piston Rod Material	—	Standard Piston Rod Material
Piston Rod Plating	—	Standard Piston Rod Plating
Piston-to-Rod Pinning	—	Standard Piston-To-Rod Connection
Spring	—	Standard Double Acting Cylinder
Stop Tube	—	No Stop Tube
Air Bleed Ports	—	No Air Bleed Ports
Submersible Option	NA	Not Available (With Warning Msg)
Cylinder Body Material	—	Standard Steel Body Material
Paint	—	Standard Paint

Your Final Model Number

HV284B2B-4.00-24.000-0175-N11T-0

Component	Code	Description
Cylinder or Configured Service Parts	CYL	Cylinder
Series	HV2	HV2 - Single Rod Heavy Duty
Mounting Style	84	84 - Cap Fixed Clevis
Bushing	B	B - Bolted Bronze
Piston Rod End Style	2	2 - Style 2 Small Male
Cushions	B	B - Cushion Both Ends
Bore	4.00	4.00 Inch
Stroke	24.000	24.000 inch
Piston Rod Diameter	0175	0175 1.75 Inch
Port Type	N	N - NPTF Pipe Thread
Port Location - Head	1	1 - Port Position 1 - Head
Port Location - Cap (or Second Head)	1	1 - Port Position 1 - Cap
Seals	1	1 - Standard (Class 1)
Modified	0	0 - Standard
Port Size - Head	NP75	NP75 3/4 Inch NPTF
Port Size - Cap (or Second Head)	NP75	NP75 3/4 Inch NPTF
Needle Location - Head	2	2 - Needle Valve Position 2 - Head
Needle Location - Cap (or Second Head)	2	2 - Needle Valve Position 2 - Cap

When your model number configuration is complete, you will see a List Price displayed.

factory.	LIST \$2289.70 (UNITED STATES DOLLAR)
----------	---

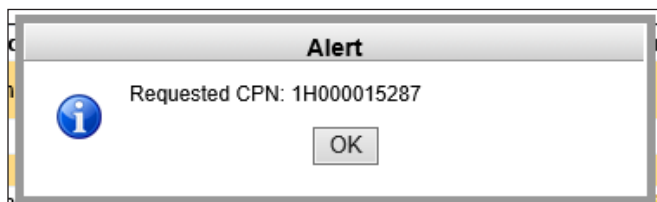
CPN

To generate a CPN (Cylinder Part Number) simply click on the CPN button.

Add to Order Go To Catalog Search	Add to Order Cont. Series Entry	Add to Order Go To Place An Order
View Summary	Refresh	Quit
CPN	Generate CAD	

Files Warning Special Instructions

A dialog box will appear with your CPN, and the rest of the screen will grey out.



At this time an option appears below the component list that will allow you to alter your selections and generate an updated CPN. Use the "Click to edit selections for a new CPN" option.

Files:	Click to edit selections for a new CPN
--------	--

Hard Parts

After you have created a CPN number for your configuration, click on the "Cylinder" line. This will bring up the listing of Hard Parts for your configuration.

Component	Code	Description
Cylinder or Configured Service Parts	CYL	Cylinder
Series	HV2	HV2 - Single Rod Heavy Duty
Mounting Style	84	84 - Cap Fixed Clevis (NFPA)
Bushing	B	B - Bolted Bronze
Piston Rod End Style	2	2 - Style 2 Small Male

Image	Code	Description
	HD	Cylinder Head
	CP	Cylinder Cap
	PR	Piston and Rod Assembly
	CB	Cylinder Body
	TR	Tie Rod

Click on any code to view additional information.

Image	Code	Description
	HD	Cylinder Head
	CP	Cylinder Cap
	PR	Piston and Rod Assembly
	CB	Cylinder Body
	TR	Tie Rod

The list price for that item is now displayed.

factory.	LIST \$591.00 (UNITED STATES DOLLAR)
Description	Files

Summary

You can easily review your configuration by selecting the view summary button. A complete listing of your selections will appear.

Add to Order Go To Catalog Search	Add to Order Cont. Series Entry	Add to Order Go To Place An Order
View Summary	Refresh	Quit
CPN	Generate CAD	

Files Warning Special Instructions

2D/3D CAD Drawings

You may use the Generate CAD button to generate 2D or 3D CAD files and receive them via email.

Add to Order Go To Catalog Search	Add to Order Cont. Series Entry	Add to Order Go To Place An Order
View Summary	Refresh	Quit
CPN	Generate CAD	

Files Warning Special Instructions

Select the type of CAD file format you would like from the list and then hit submit request.

3D CAD Generator

You are going to request email

Please select the Format for your Drawing File: **2D PDF**

Autodesk Inventor
SAT ACIS 7
STEP AP214
2D Drawings
2D PDF

Submit Request

*The free Autodesk DWF Viewer is required to view a 3D CAD file. Click here to download the DWF Viewer

You will be prompted to enter your email address and then click send.

Email recipients

Please enter email addresses of recipients through a comma

your email x

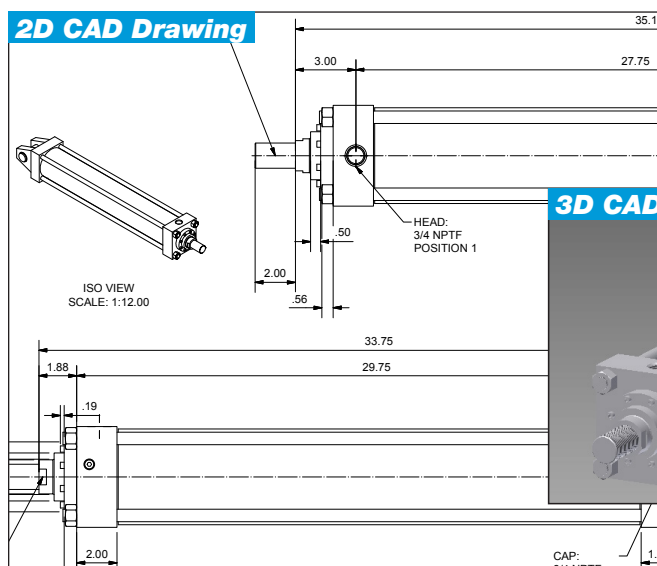
A box pops up to confirm that your email has been sent.

Alert

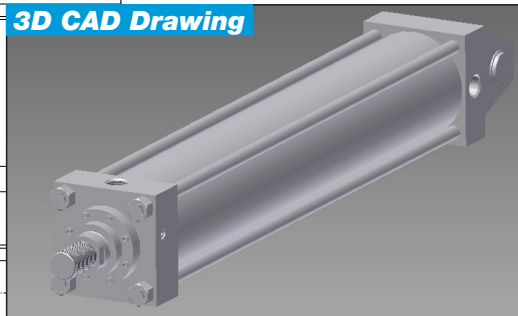
CAD generating process has started, An email will be sent shortly.

OK

Check your mailbox for your final files. If you don't receive your files within 15 minutes, please contact us at CylProductInfo@parker.com.



3D CAD Drawing



Add to Order, Return to Search

Use this button if you wish to perform a new search. Your first item, if completed, will be stored in your cart.

Release: 3.0.15.1
Supports: MS IE ver. 7-8.x, Mozilla Firefox 3.x, Apple Safari 3.x, Google Chrome 1.x, Opera 9.x

LIST \$2289.70
(UNITED STATES DOLLAR)

Add to Order Go To Catalog Search	Add to Order Cont. Series Entry	Add to Order Go To Place An Order
View Summary	Refresh	Quit
CPN	Generate CAD	

Files Warning Special Instructions

Add to Order, Continue Entry

Use this button if you wish to configure a new item using the same cylinder series. Your first item will remain unchanged in your cart.

Release: 3.0.15.1
Supports: MS IE ver. 7-8.x, Mozilla Firefox 3.x, Apple Safari 3.x, Google Chrome 1.x, Opera 9.x

LIST \$2289.70
(UNITED STATES DOLLAR)

Add to Order Go To Catalog Search	Add to Order Cont. Series Entry	Add to Order Go To Place An Order
View Summary	Refresh	Quit
CPN	Generate CAD	

Files Warning Special Instructions

Add to Order, Place an Order

Use this button to add the configured cylinder to your cart and proceed to the order entry screen. Here you may finalize details regarding your order such as delivery and special instructions.

Release: 3.0.15.1
Supports: MS IE ver. 7-8.x, Mozilla Firefox 3.x, Apple Safari 3.x, Google Chrome 1.x, Opera 9.x

LIST \$2289.70
(UNITED STATES DOLLAR)

Add to Order Go To Catalog Search	Add to Order Cont. Series Entry	Add to Order Go To Place An Order
View Summary	Refresh	Quit
CPN	Generate CAD	

Files Warning Special Instructions



Parker Hannifin Corporation
Miller Fluid Power
500 South Wolf Road
Des Plaines, IL 60016 USA
phone (847) 298-2400
fax (800) 892-1008
www.millerfluidpower.com