

SANDWICH MODULES

D03 Spacers	Page 224.4 - 224.6
D03 1-Cavity Modules	Page 224.4 - 224.6
D03 2-Cavity Modules	Page 224.4 - 224.6

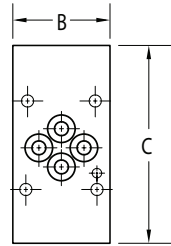
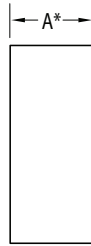
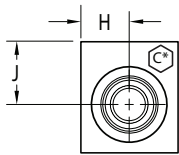
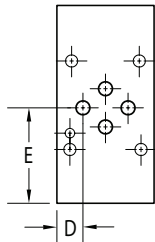
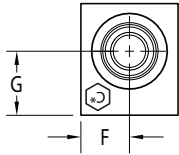


Sandwich Modules

The pages in this section are our standard product offerings for sandwich modules. Sandwich modules provide an easy way to add a valve function into an existing directional control valve circuit with no additional line plumbing.

If you need a custom sandwich module solution please visit www.daman.com for Request For Quote (RFQ) instructions.

D03 Sandwich Modules



See chart on next page for dimensions and locations.

*Dimension A may be smaller than required for valve fitment in stack. Spacer plate may be required.

Specifications, descriptions, and dimensional data are subject to correction or change without notice or incurring obligation. Download latest catalog page revisions at www.daman.com.

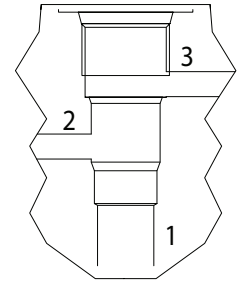
Ordering Information

Material	Valve Pattern	Product Type	...	Schematic Code*	Cavity Size*	For coating options see pages 245-246.																								
<table border="1" style="width: 100%; border-collapse: collapse;"> <tr><th colspan="2">Material</th></tr> <tr> <td style="text-align: center;">A</td> <td>Aluminum - 6061-T6 3000† psi • 20.7 MPa</td> </tr> <tr> <td style="text-align: center;">D</td> <td>Ductile Iron - D4512 5000† psi • 34.5 MPa</td> </tr> <tr> <td colspan="2">† Working pressure should be considered in accordance with ISO 4413 to determine appropriate material type.</td> </tr> </table>	Material		A	Aluminum - 6061-T6 3000† psi • 20.7 MPa	D	Ductile Iron - D4512 5000† psi • 34.5 MPa	† Working pressure should be considered in accordance with ISO 4413 to determine appropriate material type.		<table border="1" style="width: 100%; border-collapse: collapse;"> <tr><th colspan="2">Valve Pattern</th></tr> <tr> <td style="text-align: center;">D03</td> <td>ISO 4401-03-02 NFPA T3.5.1-D03 See Tech Information</td> </tr> </table>	Valve Pattern		D03	ISO 4401-03-02 NFPA T3.5.1-D03 See Tech Information	<table border="1" style="width: 100%; border-collapse: collapse;"> <tr><th colspan="2">Product Type</th></tr> <tr> <td style="text-align: center;">SM</td> <td>Sandwich Module</td> </tr> </table>	Product Type		SM	Sandwich Module		<table border="1" style="width: 100%; border-collapse: collapse;"> <tr><th colspan="2">Schematic Code</th></tr> <tr> <td style="text-align: center;">*</td> <td>See next pages for circuit details</td> </tr> </table>	Schematic Code		*	See next pages for circuit details	<table border="1" style="width: 100%; border-collapse: collapse;"> <tr><th colspan="2">Cavity Size</th></tr> <tr> <td style="text-align: center;">*</td> <td>See next pages for available cavity sizes</td> </tr> </table>	Cavity Size		*	See next pages for available cavity sizes	
Material																														
A	Aluminum - 6061-T6 3000† psi • 20.7 MPa																													
D	Ductile Iron - D4512 5000† psi • 34.5 MPa																													
† Working pressure should be considered in accordance with ISO 4413 to determine appropriate material type.																														
Valve Pattern																														
D03	ISO 4401-03-02 NFPA T3.5.1-D03 See Tech Information																													
Product Type																														
SM	Sandwich Module																													
Schematic Code																														
*	See next pages for circuit details																													
Cavity Size																														
*	See next pages for available cavity sizes																													

* To complete part number for ordering, add schematic code and cavity size from charts on next pages. Ex: AD03SM101C102

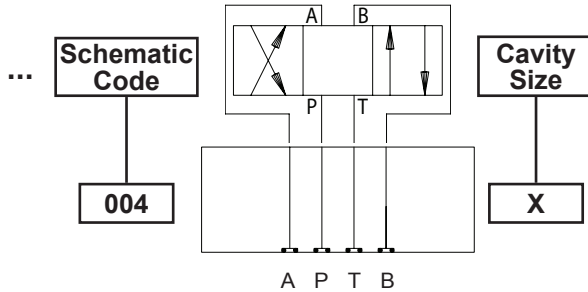
* Not all cavity sizes are available with all schematic codes. See charts on next pages for availability.

D03 Sandwich Modules



Schematic connections

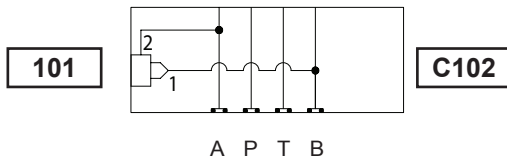
D03 Spacers



A	B	C	D	E	F	G	H	J
0.39	1.93	2.38	0.56	1.14	--	--	--	--

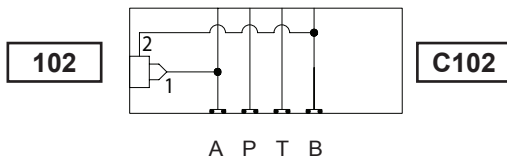
Note: 0.39" thick.

D03 1-Cavity Modules



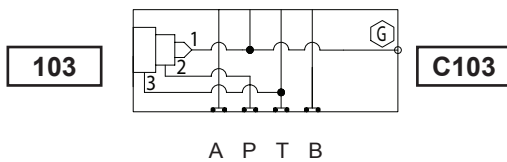
A	B	C	D	E	F	G	H	J
1.58	1.93	4.93	0.56	2.42	--	--	0.69	0.80

Note: B to A for Single Port Relief or Check. See 102 for opposite flow direction.



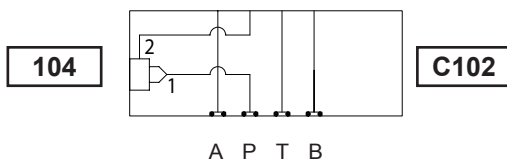
A	B	C	D	E	F	G	H	J
1.58	1.93	4.93	0.56	2.42	1.24	0.79	--	--

Note: A to B for Single Port Relief or Check. See 101 for opposite flow direction.



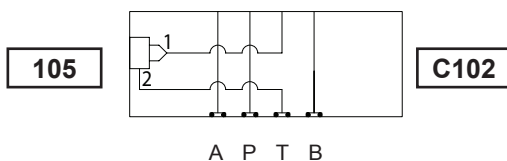
A	B	C	D	E	F	G	H	J
1.58	1.93	4.43	0.56	1.43	0.75	0.60	0.75	0.60

Note: Interrupts P for Reducing / Relieving or 3-way Selector. -04 SAE gauge port.



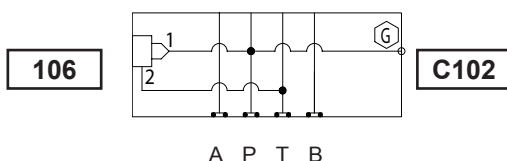
A	B	C	D	E	F	G	H	J
1.58	1.93	3.43	0.56	2.18	--	--	0.82	0.92

Note: Interrupts P for Check or Flow Control.



A	B	C	D	E	F	G	H	J
1.58	1.93	3.43	0.56	2.18	--	--	1.11	0.67

Note: Interrupts T for Check or Flow Control.

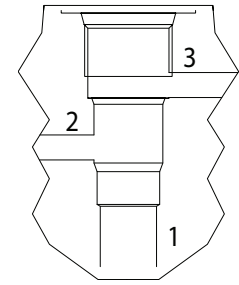


A	B	C	D	E	F	G	H	J
1.58	1.93	2.93	0.57	1.88	--	--	0.97	0.79

Note: P to T for Unloading, Flow Control or Relieving. 5 gpm max. through cartridge.

D03 Sandwich Modules

D03 2-Cavity Modules



Schematic connections

Schematic Code	Cavity Size	A	B	C	D	E	F	G	H	J
201	C082HF	1.58	1.93	3.94	0.56	1.97	1.05	0.59	1.05	0.59
Note: Interrupts A & B with cross piloting for Dual PO Check "lock valve". X = Pilot piston between port 1 of both cavities. Machined to accept a piston (bore DIA 0.5005 - 0.5020"). For single-cavity function a cavity plug is required. Consult factory for details.										
202	C102	1.58	1.93	4.93	0.58	2.42	1.24	0.79	0.69	0.80
Note: A to B and B to A for Cross Port Relief, Unloading, or Flow Control.										
203	C102	1.58	1.93	3.94	0.56	1.97	0.97	0.62	0.97	0.62
Note: Interrupts A & B for Metering, Blocking, or Load Holding. See 204 for reverse flow direction.										
204	C102	1.58	1.93	3.94	0.56	1.97	0.97	0.91	0.97	0.91
Note: Interrupts A & B for Metering, Blocking, or Load Holding. See 203 for reverse flow direction.										
205	C102	1.58	1.93	3.93	0.56	1.92	0.87	0.60	0.87	0.61
Note: A & B to T for Unloading, Flow Control, Metering, or Relief.										

For schematics 201 - 205, a cavity plug may be required for single-cavity function.

Technical Information