

Brand Hydraulics Products

Quick Ship Stock Product Guide

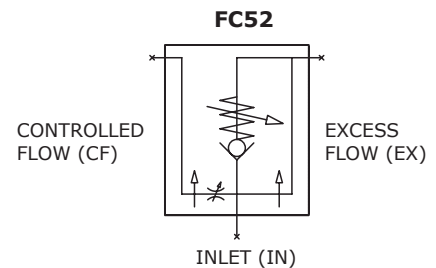
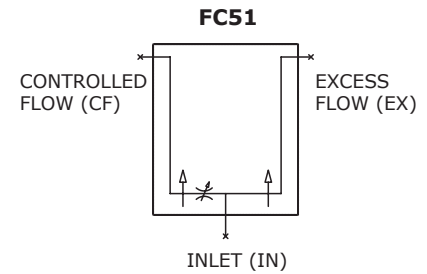


**Engineering and Manufacturing Solutions
for Hydraulics**

Flow Control & Relief Valves

FC Series Pressure Compensating Variable Flow Control

- Rated at 3000 PSI [206.8 Bar]
- Pressure compensating, variable flow control valves
- Rotary side lever to easily set controlled flow (CF)
- Controlled flow varies from zero to rated flow
- Standard flow settings: 0-8, 16, 30 GPM
- Port sizes: 3/8", 1/2", 3/4" NPT & #6, 8, 10, 12 SAE
- Rotary lever spool can be drilled to custom max flow rates
- Relief option available only in FCR51 or FCB51
- Free reverse flow checks available in FC55 series flow controls
- "PFC" = Painted Black Version
- "FC" = Unpainted Version

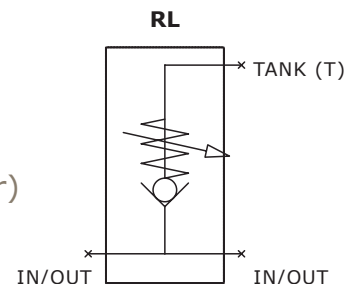


Most Popular Part Numbers

Part Number	Description
PFC51-8SAE	#8 SAE 0-8 GPM
PFC51-1/2	1/2 NPT 0-8 GPM
PFC51-12SAE	#12 SAE 0-30 GPM
PFCR51-10SAE	#10 SAE 0-16 GPM W/ RELIEF
PFCR51-12SAE	#12 SAE 0-30 GPM W/ RELIEF

RL Series Adjustable Hydraulic Relief Valves

- Rated up to 3000 PSI
- Adjustable pressure setting range from 150 PSI to 3000 PSI
- RL series: Simple ball-spring relief
- RLC series: High lift ball spring relief (reduces noise, heat & chatter)
- NPT & SAE porting available
- Zinc Plate



Most Popular Part Numbers

Part Number	Description
RL10SAE-3000	#10 SAE 0-20 GPM BALL SPRING RELIEF
RLC12-3000	#12 SAE 0-30 GPM HIGH LIFT BALL SPRING RELIEF
RL50-1500	1/2 NPT SAE 0-20 BALL SPRING RELIEF

Lever Monoblock Valves

4-Way Directional Control Valves (HPV4, AO, LS & DC)

- Rated at 3000 PSI
- "P" = Painted Black Version



AO Series Most Popular Part Numbers

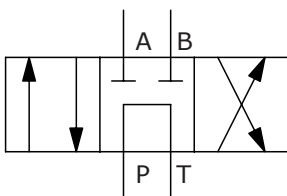
Part Number	Description
PAO120C4JS	4/3 #12 SAE Inlet/Outlet #10 work ports Closed Center Spring Center
PAO120O4JRS-25	4/3 #12 SAE Inlet/Outlet #10 work ports Open Center Spring Center W/Relief (Adjustable set at 1500 psi)
PAO120T4JRS	4/3 #12 SAE Inlet/Outlet #10 work ports Tandem Center Spring Center W/Relief (Adjustable set at 1500 psi)

LS Series (Log Splitter) Most Popular Part Numbers

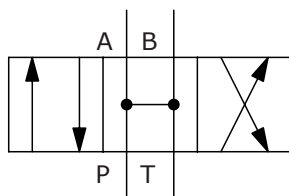
Part Number	Description
PLS120O4JRHH25	4/3 #12 SAE Inlet/Outlet #10 work Open Center W/Relief (set at 2K PSI) Hyd detent both directions
PLS120T4JRSH30	4/3 #12 SAE Inlet/Outlet #10 work Tandem Center W/Relief (set at 3K PSI) Hyd detent in 1 direction
PLS120T4JRSHA	4/3 #12 SAE Inlet/Outlet #10 work Tandem Center W/Relief (set at 2K PSI) Hyd detent in 1 direction
PLS755T4JRSH	4/3 3/4 NPT Inlet/Outlet 1/2 NPT work Tandem Center W/Relief (set at 2K PSI) Hyd detent in 1 direction

DC Series w/ Flow Control Most Popular Part Numbers

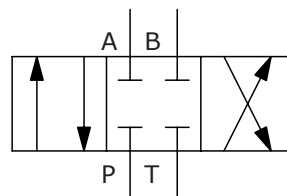
Part Number	Description
SDCF755O4LF1	4/3 3/4 NPT Inlet/Outlet 1/2 work Open Center Friction Detent
PSDCF120O4JS	4/3 #12 SAE Inlet/outlet #10 work, Open Center, Lever Spring Center



Tandem Center 4-Way (T4) - Powers cylinder or motor in both directions. Pump unloads to tank when spool is in neutral. Cylinder or motor blocked when spool in neutral.



Open Center 4-Way (O4) - All of the ports are connected to tank when the spool is in neutral. Allows cylinder to move or motor to rotate when spool is in neutral.

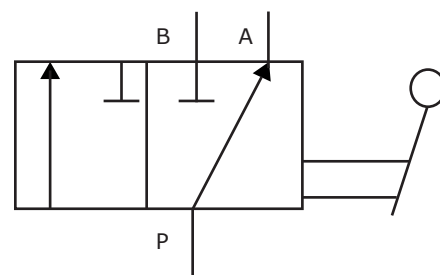


Closed Center 4-Way (C4) - All ports are blocked in neutral. Blocks cylinder or motor in neutral. Required for use with pressure compensated pump.

Selector Valves

Selector Valves (MS & DS)

- Rated at 3000 PSI (MS) & 4500 PSI (DS)
- MS series switches one port between two separate circuits
- DS double selector switches two ports between two separate circuits
 - Also allows for switching a circuit from series to parallel
 - Available with knob, lever, pilot or electrical operators
- "P" = Painted Black Version



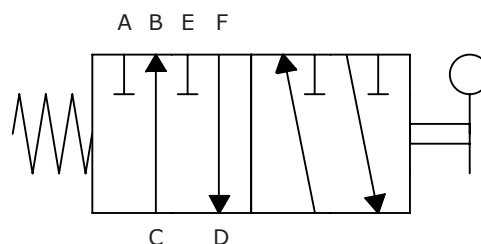
PMS16-SAE



PMSC12-SO

MS Series Single Selector Most Popular Part Numbers

Part Number	Description
SDCF75504LF1	4/3 3/4 NPT Inlet/Outlet 1/2 work Open Center Friction Detent
PSDCF12004JS	4/3 #12 SAE Inlet/outlet #10 work, Open Center, Lever Spring Center



DS Series Double Selector Most Popular Part Numbers

Part Number	Description
PDS10CKD	#10 SAE PORTS, CLOSED CROSSOVER, Knob, Detents both ends
PDS12CLD	#12 SAE PORTS, CLOSED CROSSOVER, LEVER, DETENTS both ends
PDS08AKD	#8 SAE SERIES/PARALLEL, Knob, Detent both ends

Hydraulic Hand Pumps

Hand Operated Hydraulic Pump (HP)

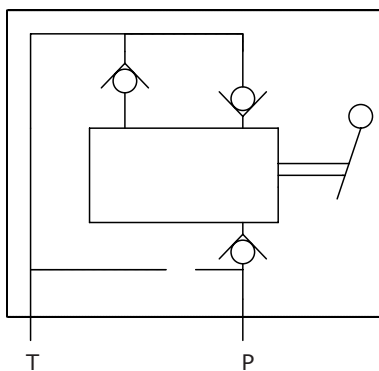
- Vertical or horizontal options available
- Port sizes: #6 SAE outlet & 1/4" NPT tank fill-port
- HP22SA: single acting pump .20 in3 per cycle, 6000 PSI max
- HP61DA: double acting pump .60 in3 per cycle, 3000 PSI max
- HP121DA: double acting pump 1.20 in3 per cycle, 2000 PSI max
- Standard adjustable relief & release valve (not included with "No Tank" option)
- Four standard tank sizes or two options to use in conjunction with an external reservoir



HP Series Most Popular Part Numbers

Part Number	Description
PHP121DA6	DOUBLE ACTING 65CI TANK, 1.2 CID. 1/4 NPT FILLER PLUG

HP121 OR HP61



Brand Hydraulic Products



Brand Hydraulics designs, manufactures and assembles a large variety of hydraulic valves, flow controls, pumps electronic controls, and related products.

Scan for a complete listing of products available from Brand Hydraulics.



Flow Controls



Dividers & Combiners



**3-Way, 4-Way, 8-Way
Monoblock**



4-Way Stack Valves



Relief Valves



**Pilot Check / Shuttle
Valves**

Notes



Products

Actuators, Stages & Cylinders	Filtration	Pneumatics
Automation Components	Gauges & Measurement	O-Rings & Seals
Compressed Air Equipment	Hose, Tubing & Fittings	Sensors & Switches
Controls	Hydraulics	Tools & Assembly
Drives & Motors	Machine Safety	Vacuum
Electrical	Mobile & Truck	Valves



Services

Seal Kitting Services	Rental Units/Equipment
Hose Kitting Services	Vendor Managed Inventory
Cylinder Interchanges	
Hydraulic Component Repair	
Tube Bending and Fabrication	



Engineered Solutions

Control Systems & Enclosures	Custom Hydraulic Manifolds	System Design
Standard Hydraulic Power Units	Pneumatic Systems & Assemblies	Schematics
Custom Hydraulic Power Units	Seal Engineering	Custom Machine Guarding
	System Installation	Workstations & Workcells



Technologies

Automation	Hose, Tubing & Fittings	Seals & Engineered Materials
Compressed Air & Pneumatics	Hydraulics	Industrial Hose
Controls/Control Panel	Mobile Controls & Hydraulics	
Electromechanical	Machine Safety	
Filtration		



Locations

We support our customers in the Western United States with a growing number of locations. When you visit one of our ParkerStores, you can count on quick, friendly service from one of our store professionals.

All of our ParkerStores stock products provide hose assemblies while you wait, adapters, and many Parker fluid connector products. Individual stores offer additional products and services to support the industries in their specific locations.