

Control Panel Solutions



OUR VALUE PROPOSITION

Controlled Motion Solutions/Motion & Flow Control Products is a team of engineers, technicians, and salespeople that work together to support the production and implementation of your control panels.

Comoso/MFCP specializes in bringing innovative solutions into the controls that operate your manufacturing processes. We do this by establishing a collaborative relationship, sharing expert advice, and offering unique designs to deliver a one-of-a-kind control panel platform based on the customer's requirements. This is not a "one size fits all" solution; we work with you to find what works best for your business.

We consider the whole system need, not just your product needs. Our team can design & install anything from OEM controls to custom-engineered control solutions to fit your unique needs. We provide high-quality service that is on time and within budget. With Comoso/MFCP, quality doesn't come with a price; it comes as a standard.

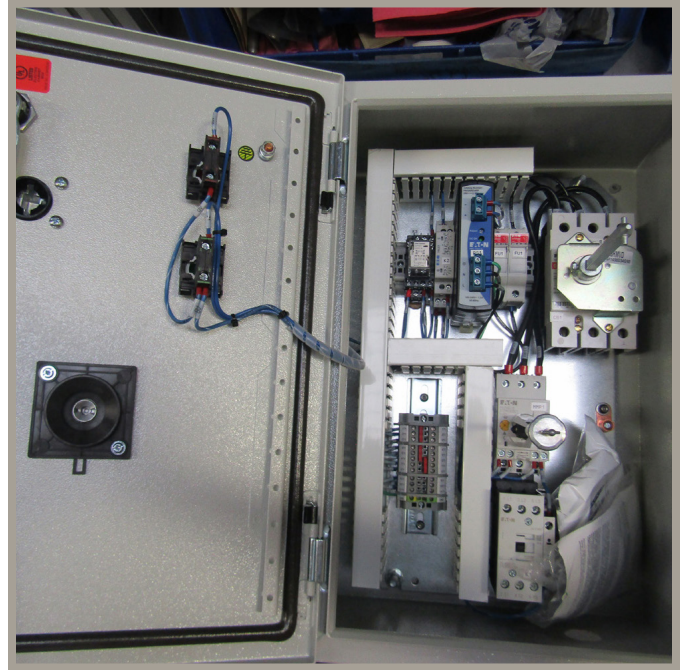
We make sure to use the best industry practices and standards for all of our work. UL-508A is the industry's most widely recognized electrical industrial control panel standard. UL-508A helps to ensure the safe and reliable operation of all types of electric and electronic equipment. Comoso/MFCP is certified UL-508A.

The control panel is a crucial part of any project, and it's even more critical when you want to create something innovative. We're always looking for new ways to help our clients meet their specific needs while staying on the cutting edge of technology--let us know what your requirements are to assist you better. We listen and understand. The technical sales voice is our specialty, and it's why so many OEMs trust us when designing control panels--because they are more complicated than they look!

If you're a manufacturer looking for a knowledgeable, collaborative partner in the production of your control panels, Comoso/MFCP is here to help. We specialize in bringing advanced solutions and front-line control panel technology to control hydraulics, pneumatics, or electromechanical products. We offer OEM scale or one-of-a-kind control panel solutions to improve efficiency and maximize profitability for your business from start-up companies with limited resources or established manufacturers seeking new technology or competitive edge.

Contact us for quality, competitively priced products and solutions from industry experts.

CONTROL PANEL EXAMPLES



MOTOR & PUMP PANELS

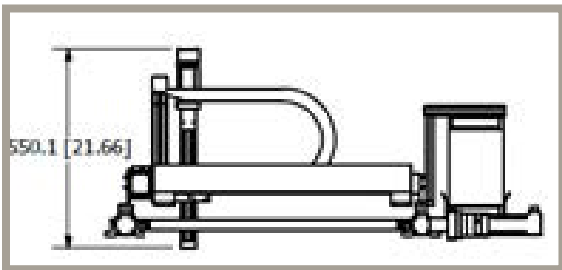
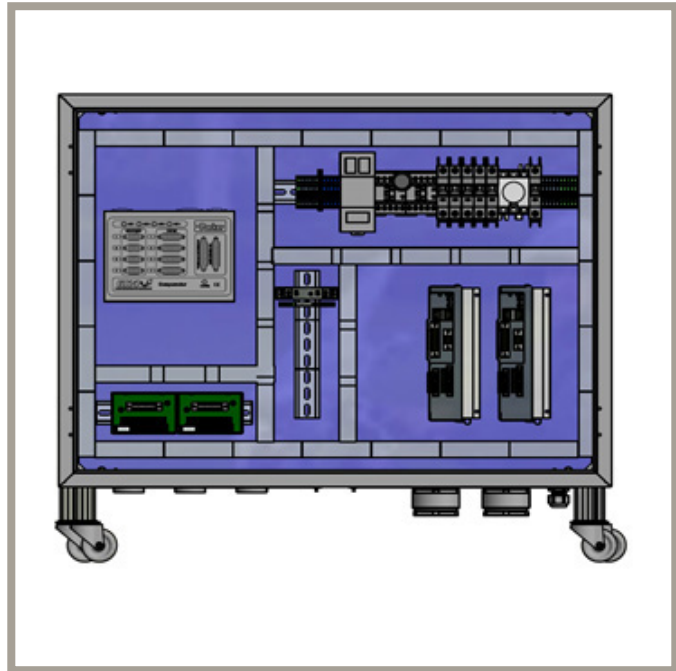
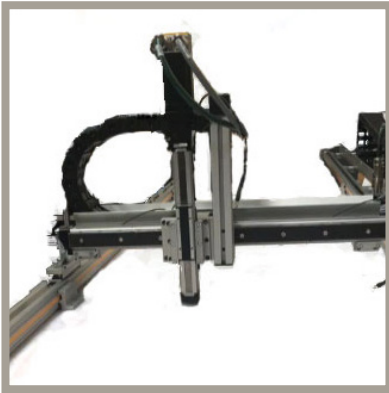


MOTOR AND PUMP PANELS

- Hydraulic power units control panels
- Water Pump
- Farming/irrigation pump panels
- AC/DC drives and related controls
- Softstart pump panels
- DOL pumps



MECHATRONIC SYSTEMS

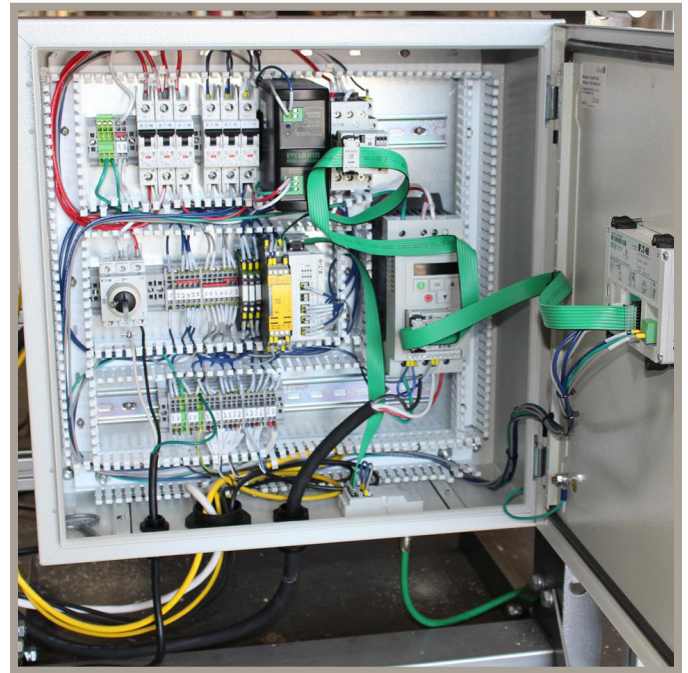


CUSTOM MECHANICAL AND MOTION CONTROL SYSTEMS

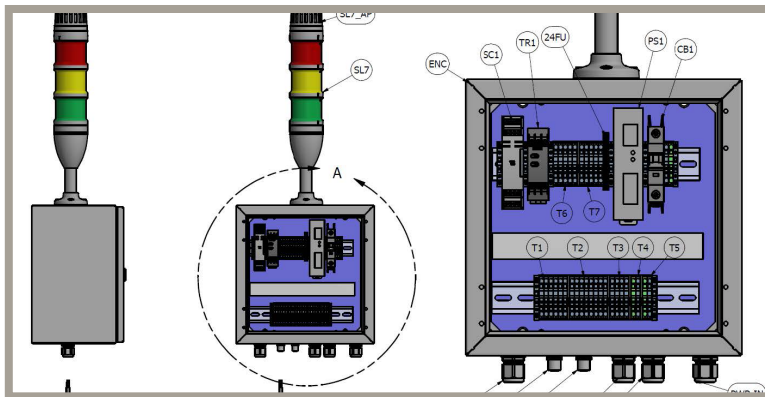
- Positioning Systems
- Gantries
- Press Systems
- Motion Control Panels
- Customer Systems
- Factory Authorized Training
- Motion Controller and Drive Programming



SAFETY CONTROL PANELS

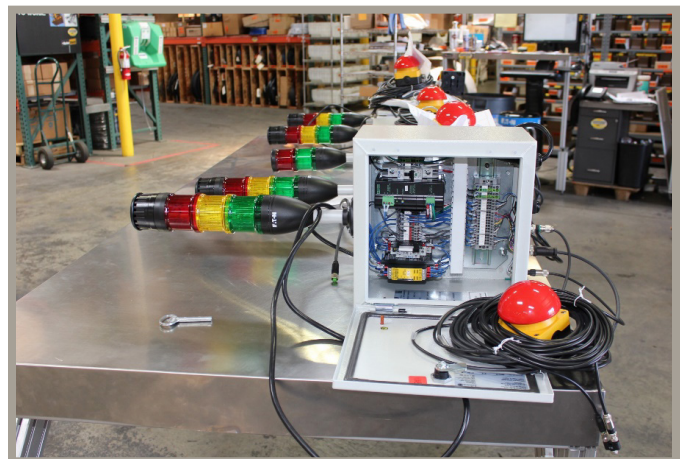


SAFETY CONTROL PANELS

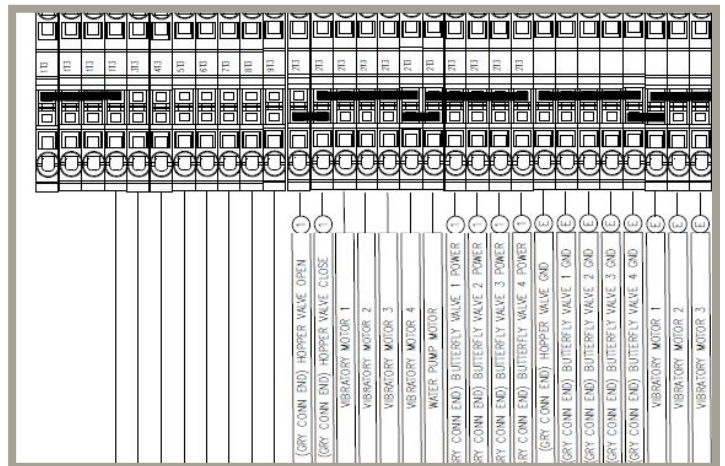
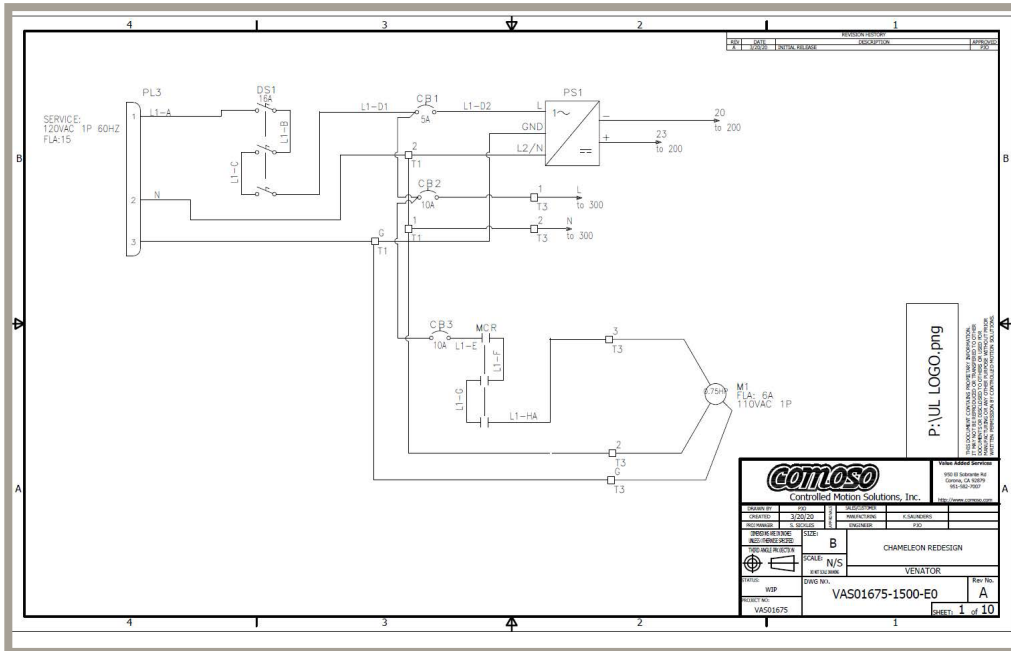


SAFETY CONTROLS

- Built to meet ISO 13849 CAT4
- Integration with
 - Hard Guarding
 - Pneumatic Controls
 - Safety Interlocks
 - Light Curtains



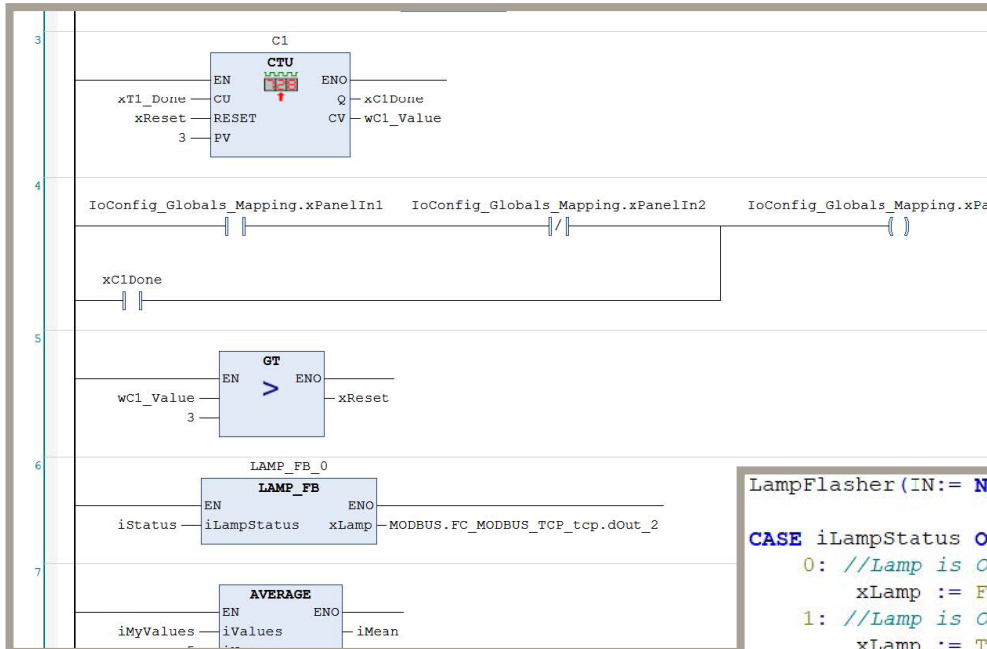
SCHEMATIC DEVELOPMENT



CAPABILITIES

- Fully documented schematics
- 3D layout of enclosure ensures all components fit with proper clearance
- Detailed Terminal Block Diagrams to ease field wiring
- Revision control to ensure proper build
- Full BOM development based on scope of work/technical requirements

PROGRAM DEVELOPMENT




```
LampFlasher(IN:= NOT LampFlasher.Q, PT:= T#2000MS);  
  
CASE iLampStatus OF  
  0: //Lamp is OFF  
    xLamp := FALSE;  
  1: //Lamp is ON  
    xLamp := TRUE;  
  2: //Lamp Flashes,  
    xLamp := LampFlasher.ET > T#1000MS;  
ELSE  
  //Turn xLamp off with invalid status  
  xLamp := FALSE;  
END_CASE
```

CAPABILITIES

- Programming to IEC 61131-3 including Ladder and Structured Text
- HMI/Web Visualization Programming
- Fieldbus Expertise - EthernetIP, Profinet, ModbusTCP, EtherCAT, CANOpen, DeviceNET, Profibus, OPC UA and more
- IIOT connectivity

 **COCKPIT**


CODESYS

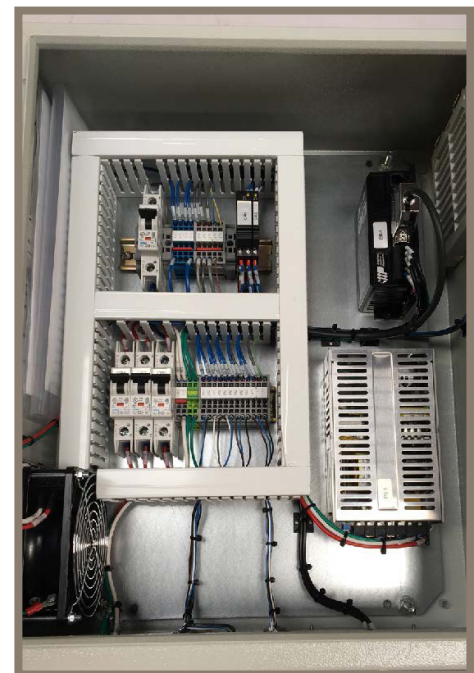
OEM CONTROL SYSTEMS



CAPABILITIES

- Scale production without capital expense and additional labor
- Build to print or developed by Comoso/MFCP
- Factory Acceptance Testing
- Start-up & Commissioning Assistance
- Maintenance Recommendations

KEY PARTNERS





Products

Actuators, Stages & Cylinders
Automation Components
Compressed Air Equipment
Controls
Drives & Motors
Electrical

Filtration
Gauges & Measurement
Hose, Tubing & Fittings
Hydraulics
Machine Safety
Mobile & Truck

Pneumatics
O-Rings & Seals
Sensors & Switches
Tools & Assembly
Vacuum
Valves



Services

Seal Kitting Services
Hose Kitting Services
Cylinder Interchanges
Hydraulic Component Repair
Tube Bending and Fabrication
Rental Units/Equipment

Vendor Managed Inventory



Engineered Solutions

Control Systems & Enclosures
Standard Hydraulic Power
Units
Custom Hydraulic Power
Units
Custom Hydraulic Manifolds

Pneumatic Systems &
Assemblies
Seal Engineering
System Installation
System Design
Schematics

Custom Machine Guarding
Workstations & Workcells



Technologies

Automation
Compressed Air & Pneumatics
Controls/Control Panel
Electromechanical
Filtration
Hose, Tubing & Fittings

Hydraulics
Mobile Controls &
Hydraulics
Machine Safety
Seals & Engineered
Materials

Industrial Hose



Locations

We support our customers in the Western United States with a growing number of locations. When you visit one of our ParkerStores, you can count on quick, friendly service from one of our store professionals.

All of our ParkerStores stock products provide hose assemblies while you wait, adapters, and many Parker fluid connector products. Individual stores offer additional products and services to support the industries in their specific locations.